

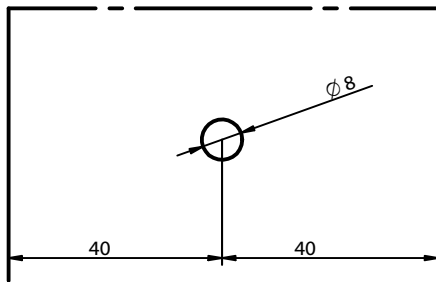
Kragenschraube 12x60 mm
Art. - Nr. K102



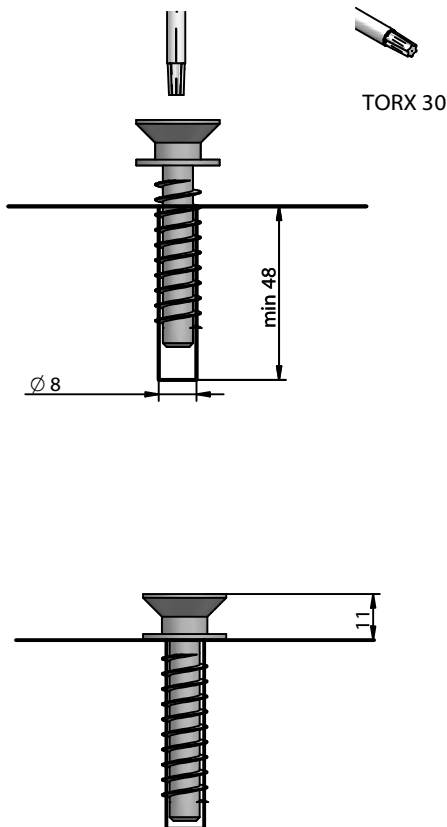
WALCO V 60



1. Bohren



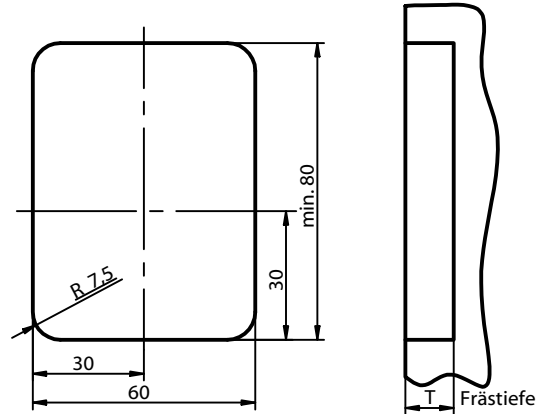
2. Eindrehen der Kragenschraube



Hinweis: Die Höhe kann durch unterlegen einer weiteren Unterlegscheibe verändert werden.

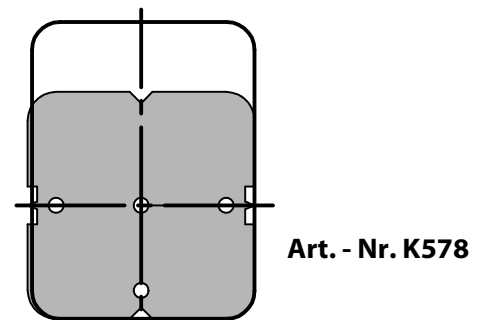
1. Ausfräsung herstellen

Mindest- Ausfräsmaße:

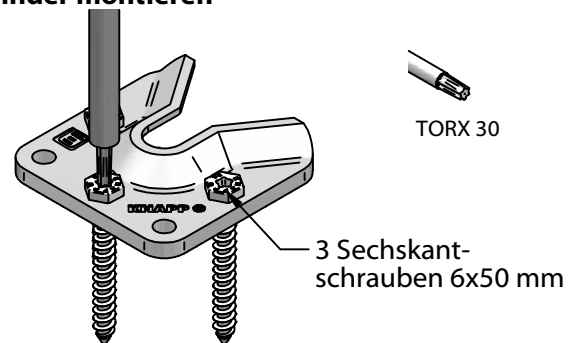


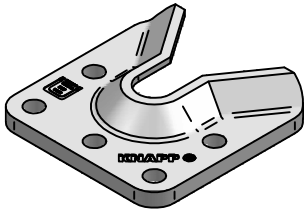
Halteschraube	Einfrästiefe
Kragenschraube	13 mm fugenlose stramme Montage 11 mm leichtes Einhängen (2 mm Fuge)
Einstellbare Halteschraube	11 - 22 mm
Gefederte Halteschraube	11 - 17 mm

2. Verbinderposition mit Anreißschablone anreißern



3. Verbinder montieren

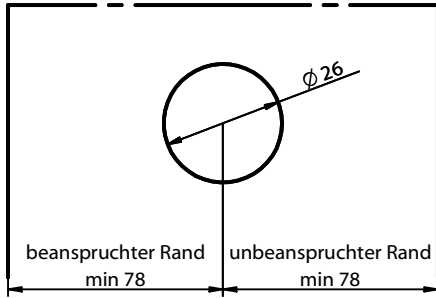




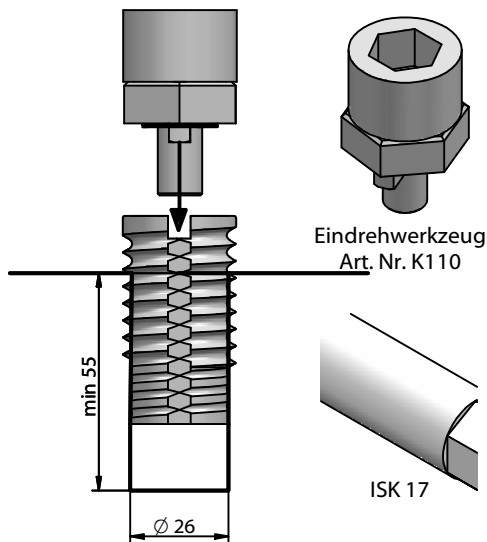
Gefederte Halteschraube M12 Art. - Nr. K106



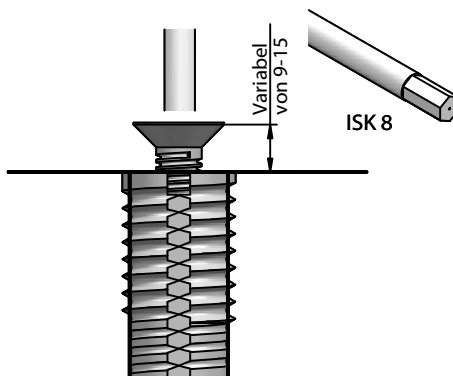
1. Bohren



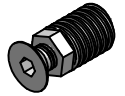
2. Eindrehen der Einschraubmutter mit Eindrehwerkzeug



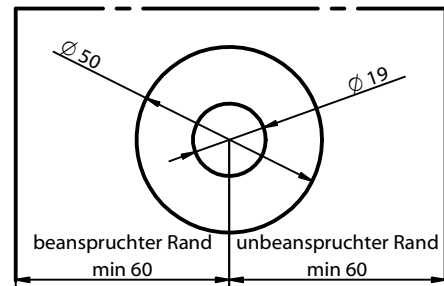
3. Halteschraube M12 eindrehen und auf Höhe justieren



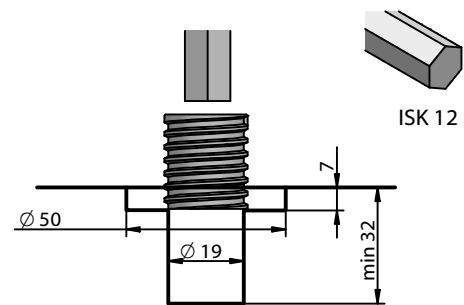
Einstellbare Halteschraube M12 Art. - Nr. K104



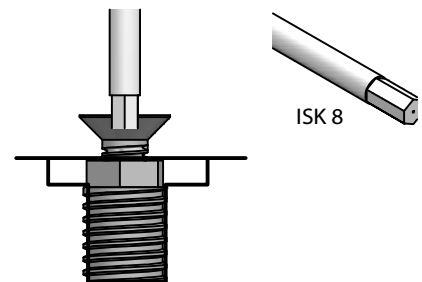
1. Stufenbohrung erstellen



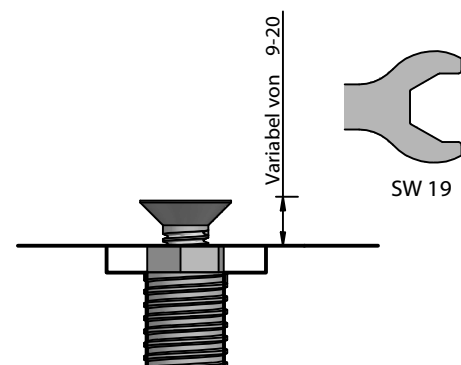
2. Eindrehen der Einschraubmutter

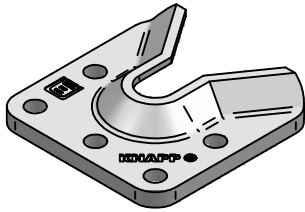


3. Eindrehen der Halteschraube incl. Mutter M12



4. Höhe justieren und Schraube mit Mutter fixieren





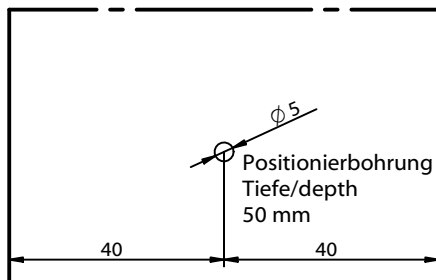
WALCO® V 60 VK D12

Wandverbinder

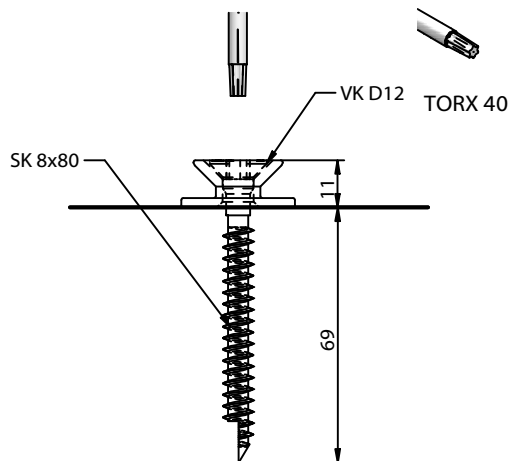
Verschraubter Kragenbolzen Art. - Nr. K108



1. Bohren



2. Eindrehen der Schraube in den Kragenbolzen



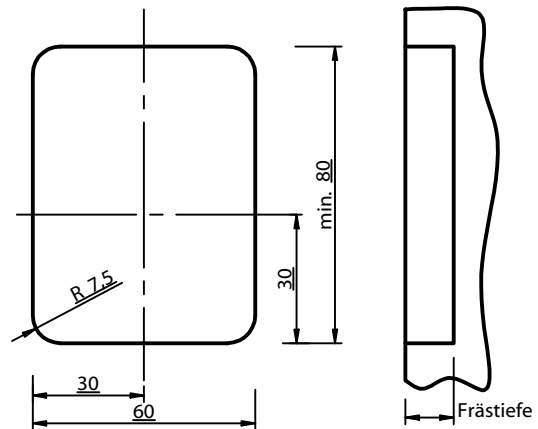
Hinweis: Die Höhe kann durch unterlegen einer weiteren Unterlegscheibe verändert werden!
Die Vollgewindeschraube kann auch mit einem $\phi 5$ mm Bohrer vorgebohrt werden!

WALCO V 60



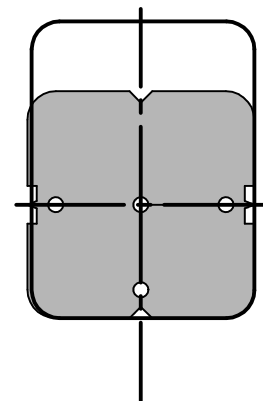
1. Ausfräsung herstellen

Mindest- Ausfräsmaße:

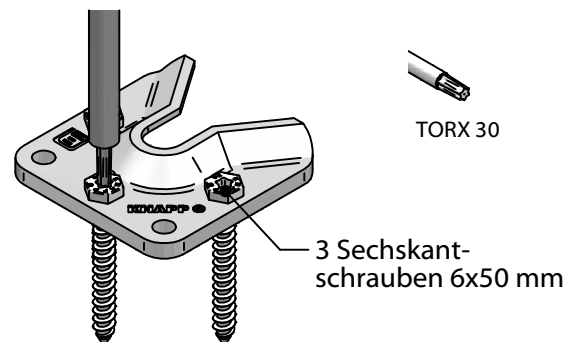


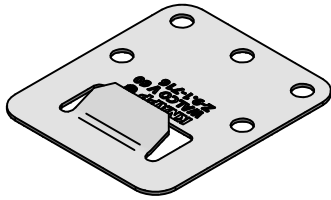
Frästiefe:
13 mm für fugenlose stramme Montage
11 mm für leichtes Einhängen (mit 2 mm Fuge)

2. Verbindersposition mit Anreißschablone anreißern



3. Verbinder montieren



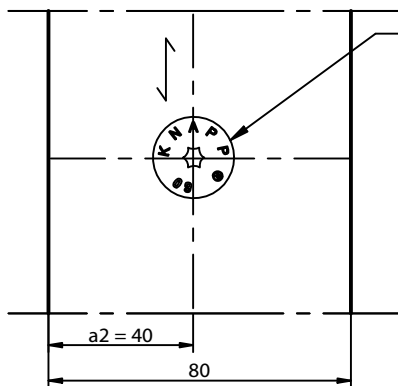
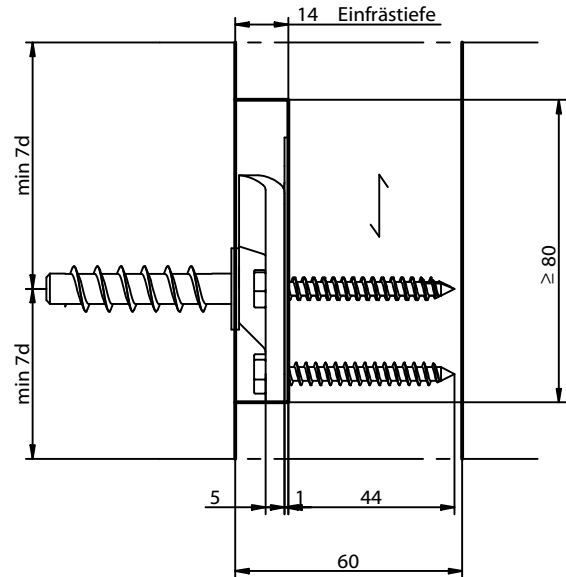
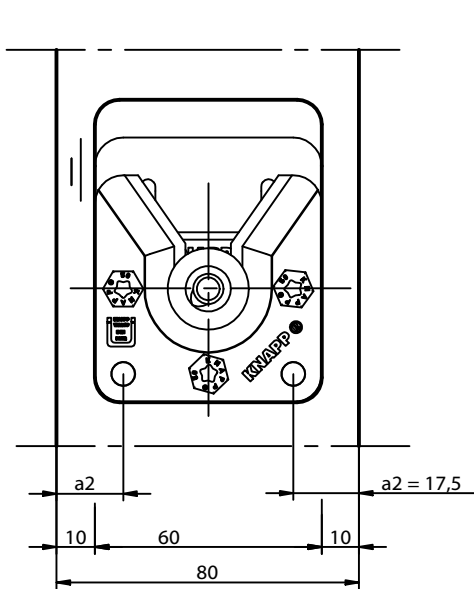


WALCO® V 60

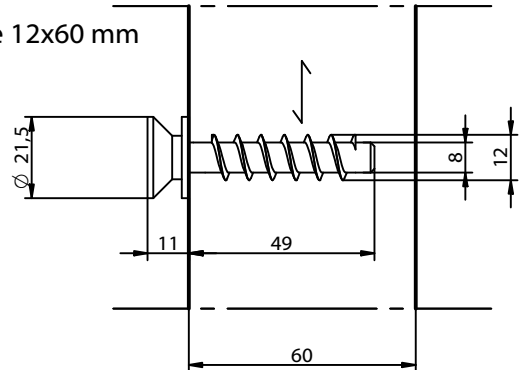
Wandverbinder mit Sperrklappe

WALCO V Sperrklappe
Art. - Nr. K112

WALCO V 60



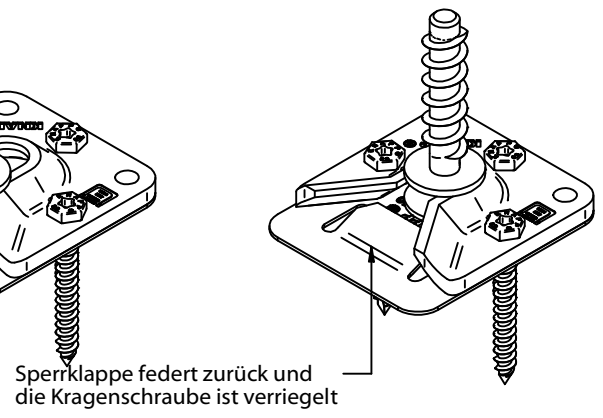
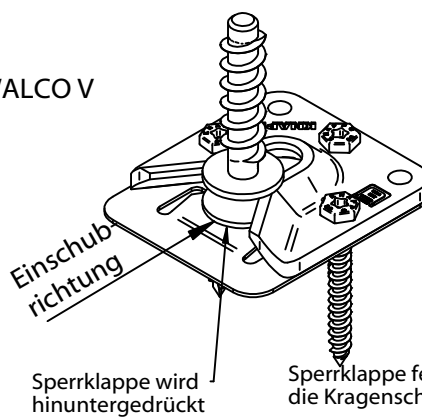
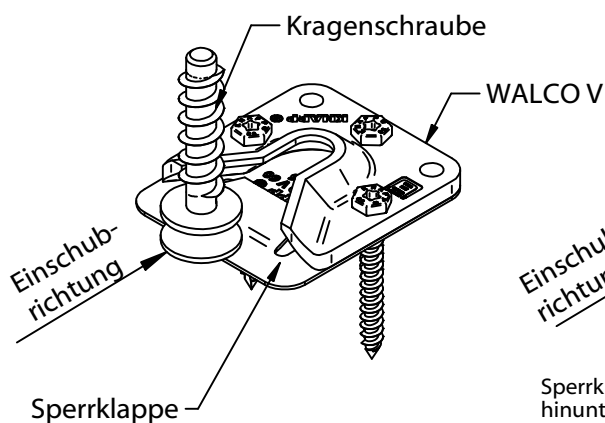
Kragenschraube 12x60 mm



1. Positionieren

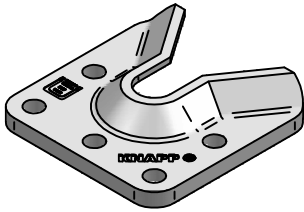
2. Einführen

3. Verriegeln



Diese Zeichnung ist Eigentum der Knapp GmbH

© Knapp GmbH. Alle Maße in mm - Irrtümer, Druckfehler und Änderungen vorbehalten / all measures in mm - Errors excepted. VERSION 12.08.2013



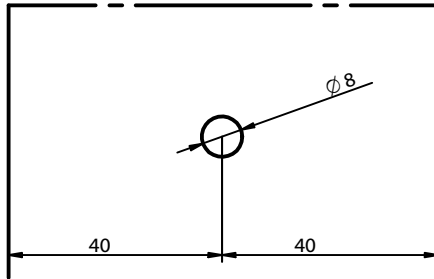
Collar Screw 12x60 mm
Art. - No. K102



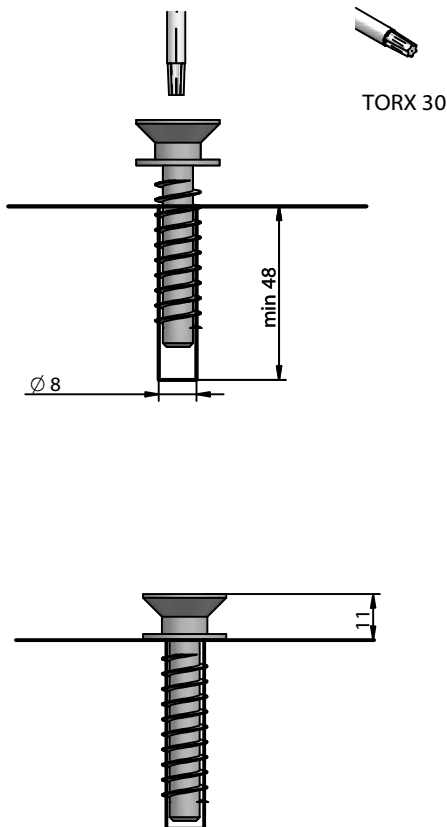
WALCO V 60



1. Drilling



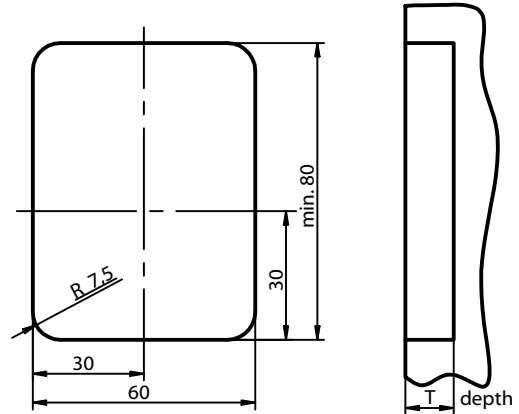
2. Screwing collar screw



Tip: If the collar screw requires a higher height, one additional washer can be laid under the collar screw washer.

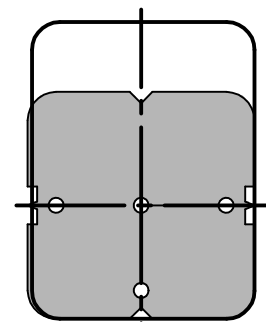
1. Machined edge

Minimum milled dimension



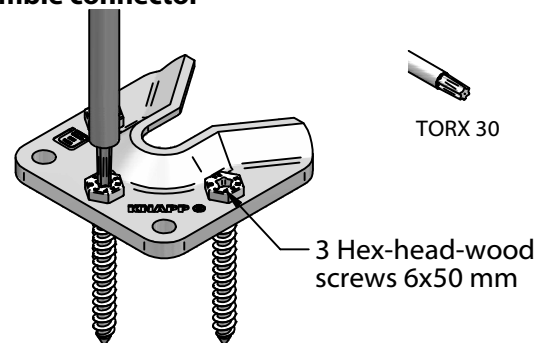
Holding screw	Depth T
Collar screw	13 mm without joint=> tight fitting
Retaining holding screw	11 - 22 mm
Retaining spring holding screw	11- 17 mm

2. Marking Connector position with scribing jig

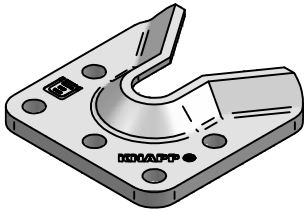


Art. - No. K578

3. Assemble connector



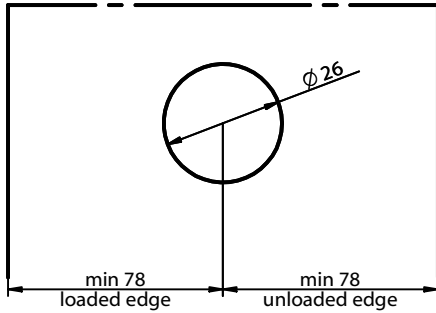
3 Hex-head-wood screws 6x50 mm



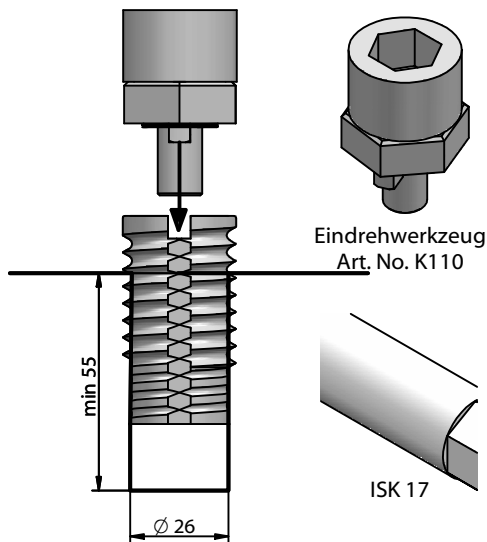
**Retaining spring holding screw
M12 Art. - No. K106**



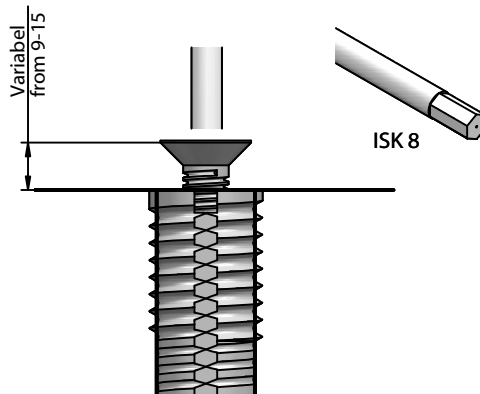
1. Drilling



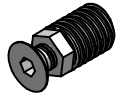
2. Screwing the insert screw with special tool



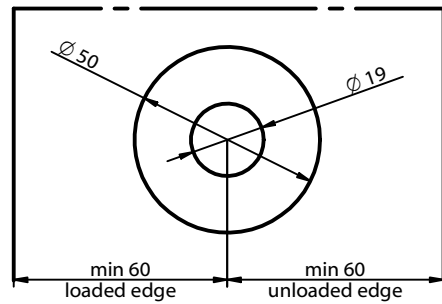
3. Screwing holding screw and adjustment of height



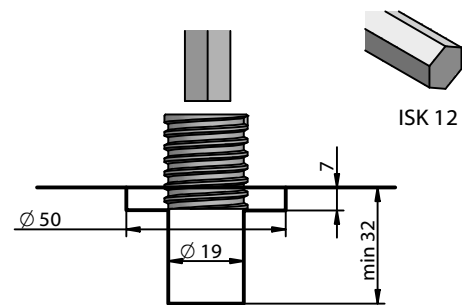
**Retaining holding screw M12
Art. - No. K104**



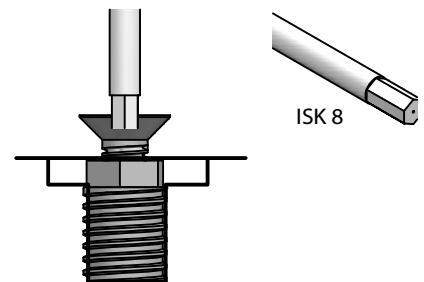
1. Drilling the two holes



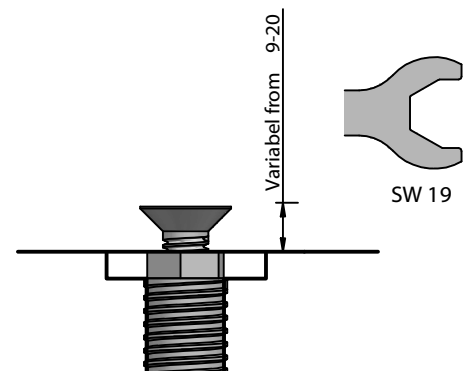
2. Screwing insert screw



3. Screwing retaining holding screw and nut M12

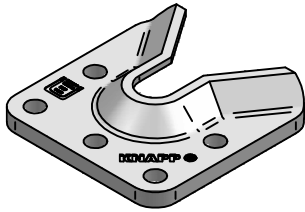


4. Fixing the screw and nut in the ideal position





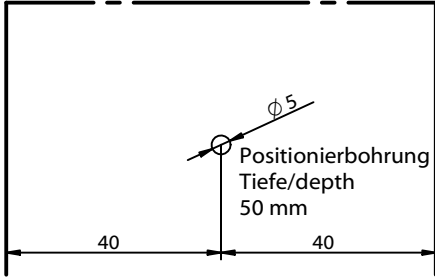
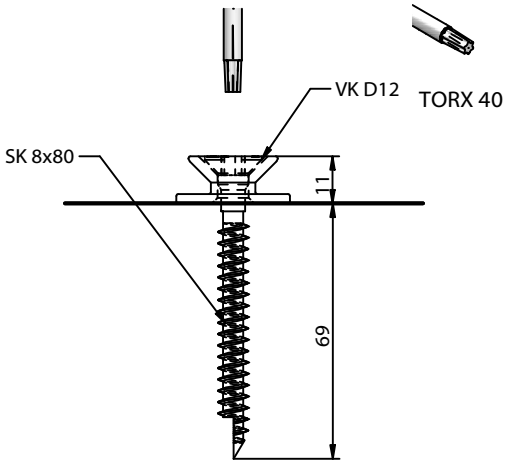
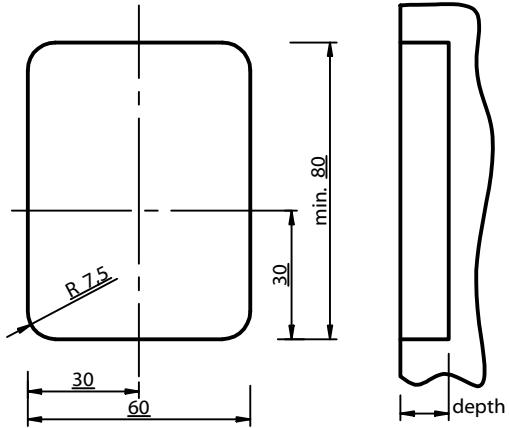
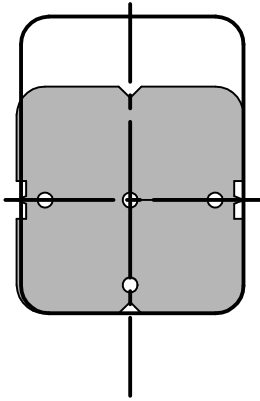
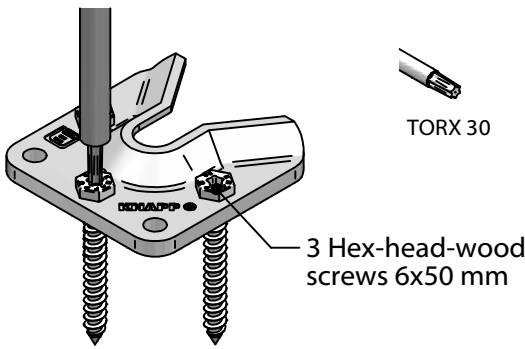
This drawing is the exclusive property of Knapp GmbH.

© Knapp GmbH. All measures in mm - Errors excepted. VERSION 12.08.2013



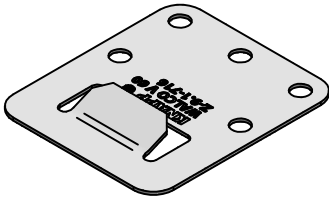
WALCO® V 60 VK D12

Wall connector

<p>Collar bolt holding screw Art. - No. K108</p> 	<p>WALCO V 60</p> 
<p>1. Drilling</p>  <p>Positionierbohrung Tiefe/depth 50 mm</p> <p>40 40</p> <p>$\phi 5$</p> <p>2. Screwing countersink screw into Collar bolt</p>  <p>SK 8x80</p> <p>VK D12 TORX 40</p> <p>11</p> <p>69</p> <p>Tip: If the collar bolt holding screw requires a higher height, one additional washer can be laid under the collar screw washer. The full thread screw can be pre drilled with a $\phi 5$ mm diameter.</p>	<p>1. Machined edge Minimum milled dimension</p>  <p>min. 80</p> <p>30</p> <p>60</p> <p>30</p> <p>R7.5</p> <p>depth</p> <p>Depth: 13 mm without joint => tight fitting 11 mm easy to connect (2 mm gap)</p> <p>2. Marking Connector position with scribing jig</p>  <p>Art. No. K578</p> <p>3. Assemble connector</p>  <p>TORX 30</p> <p>3 Hex-head-wood screws 6x50 mm</p>

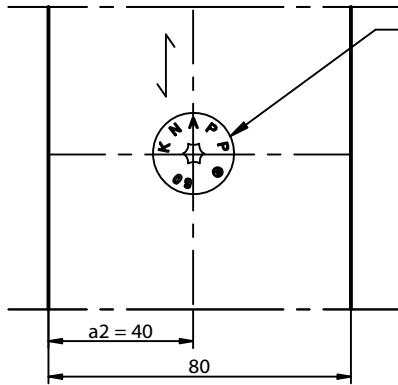
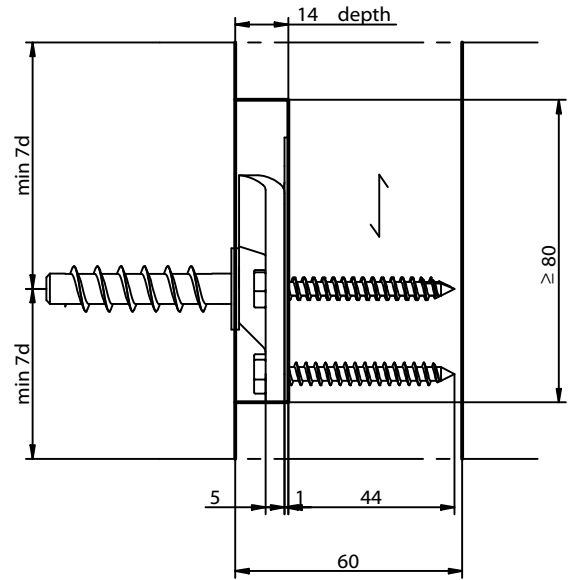
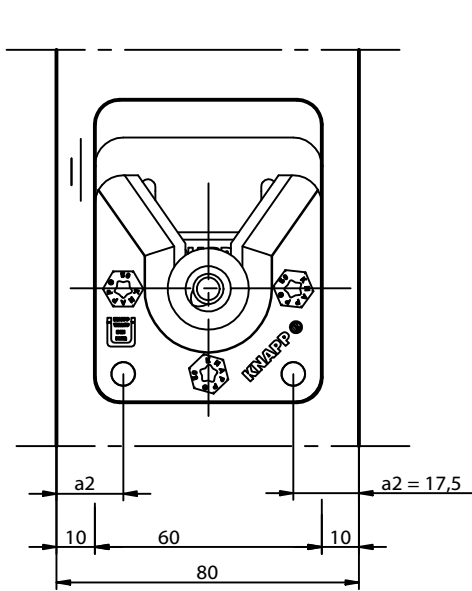
This drawing is the exclusive property of Knapp GmbH.

© Knapp GmbH. All measures in mm - Errors excepted. VERSION 12.08.2013

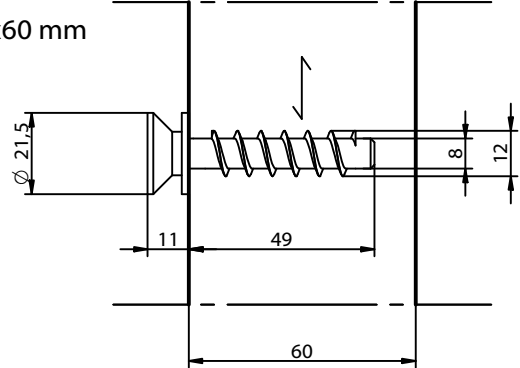


WALCO V Clip lock
Art. - No. K112

WALCO V 60



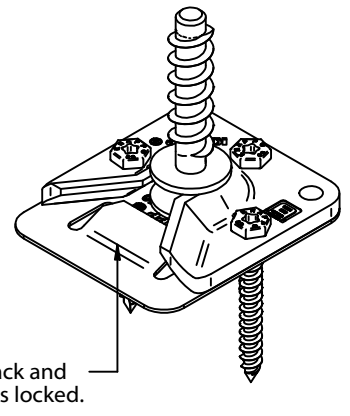
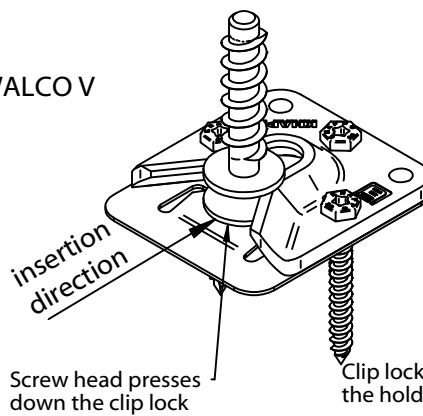
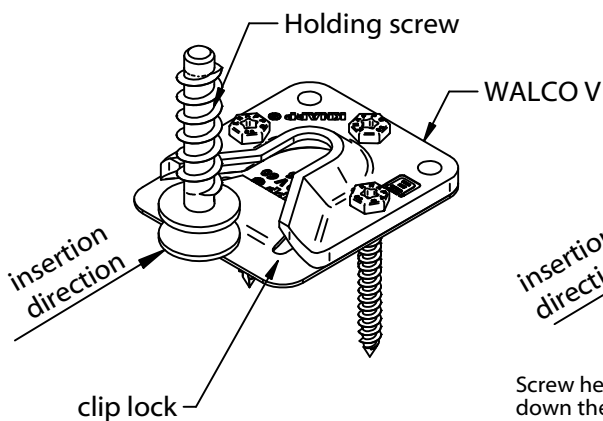
Collar screw 12x60 mm



1. Positioning

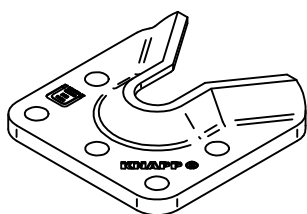
2. Insertion

3. Locking



This drawing is the exclusive property of Knapp GmbH.

© Knapp GmbH. All measures in mm - Errors excepted. VERSION 12.08.2013



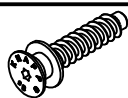
ETA-10/0189

Notice de montage

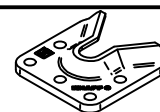
WALCO® V 60

Assemblage d'éléments muraux

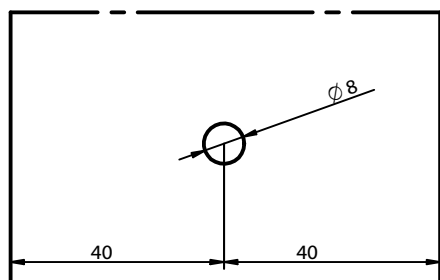
Vis à collerette 12x60
Réf. K102



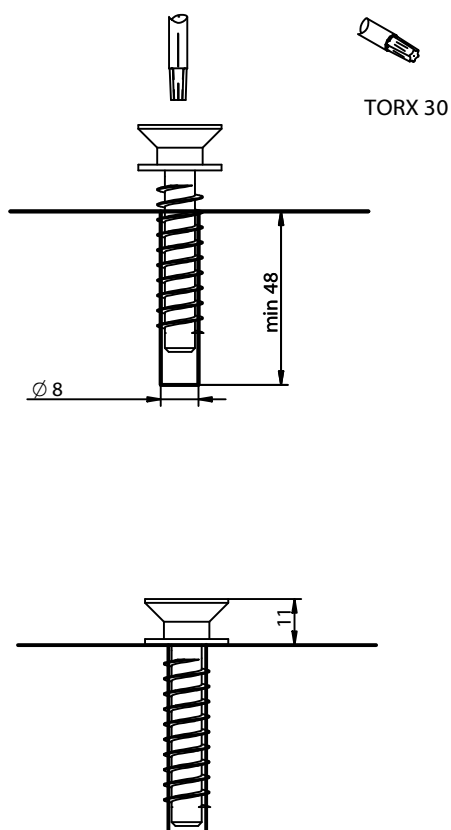
WALCO V 60 Ferrure
d'accroche



1. Percer sur le montant opposé à la ferrure d'accroche et dans son axe



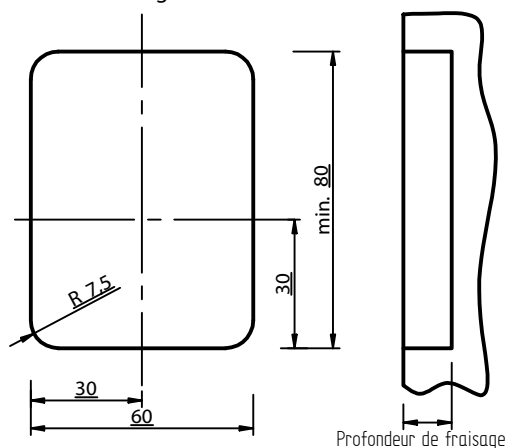
2. Visser la vis à collerette en butée



Note: La hauteur de vis peut être réglée en rajoutant des rondelles supplémentaire

1. Usiner la poche d'encastrement de la ferrure d'accroche

Dimensions de fraisage minimum:

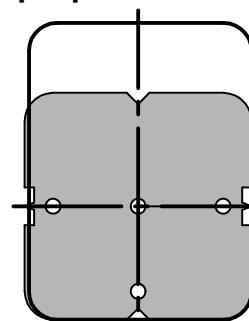


Prof. 11 mm - Montage facile avec 2 mm de jeu
Prof. 13 mm - Montage jointif sans jeu

Profondeur de fraisage avec insert et vis d'accroche:
11-22 mm

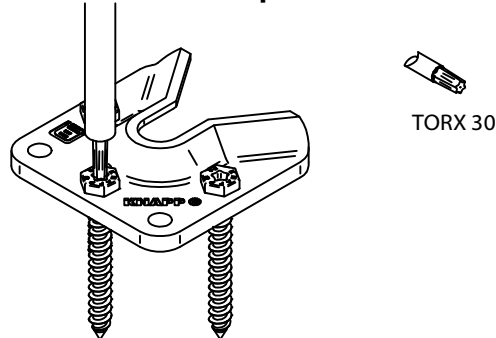
Profondeur de fraisage avec insert à ressort et vis d'accroche:
11-17 mm

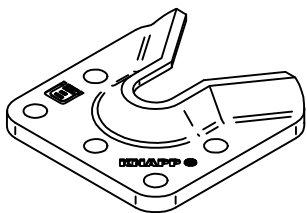
2. Si besoin pointer les 3 vis de fixation pour la ferrure et pré-percer



Réf. K578

3. Visser la ferrure à son emplacement





ETA-10/0189

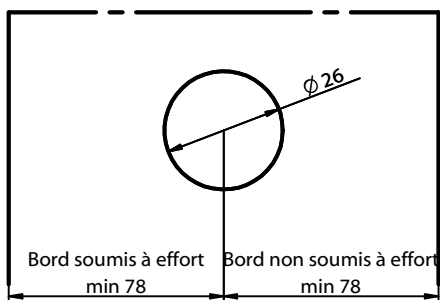
Notice de montage WALCO® V 60

Assemblage d'éléments muraux

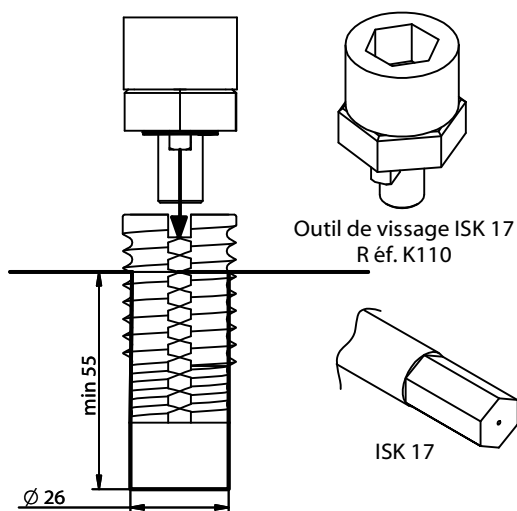
Insert à ressort avec vis d'accroche M12 Réf. K106



1. Percer sur le montant opposé à la ferrure d'accroche et dans son axe

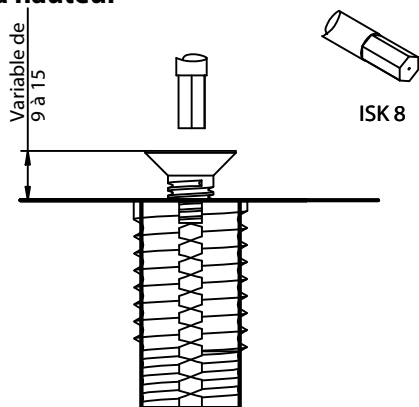


2. Visser l'insert avec l'outil de vissage



3. Visser la vis d'accroche

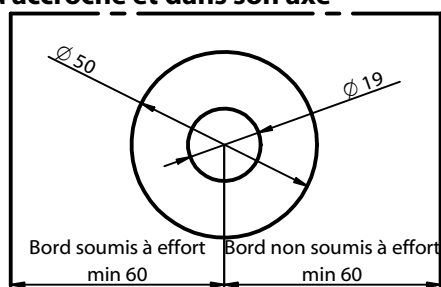
4. Régler la hauteur



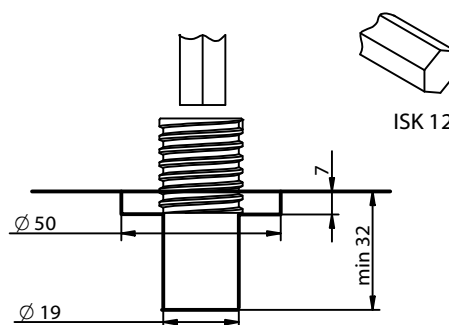
Insert avec vis d'accroche Réf. K104



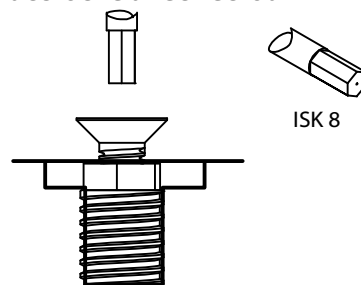
1. Percer sur le montant opposé à la ferrure d'accroche et dans son axe



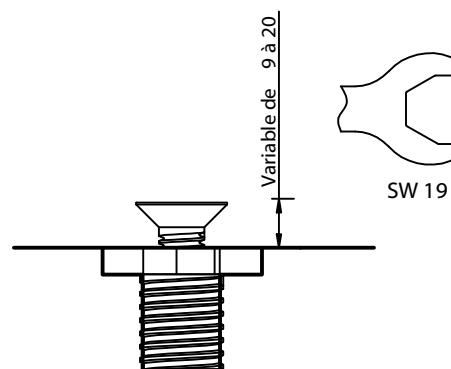
2. Visser l'insert

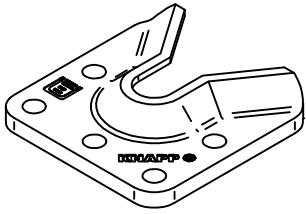


3. Visser la vis d'accroche avec l'écrou



4. Régler la hauteur de vis et la serrer avec l'écrou





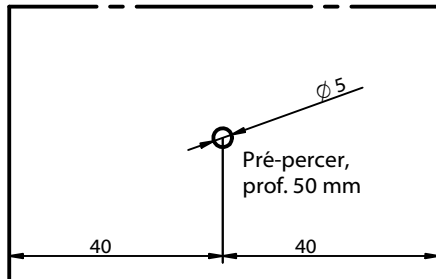
WALCO® V 60

Assemblage d'éléments muraux

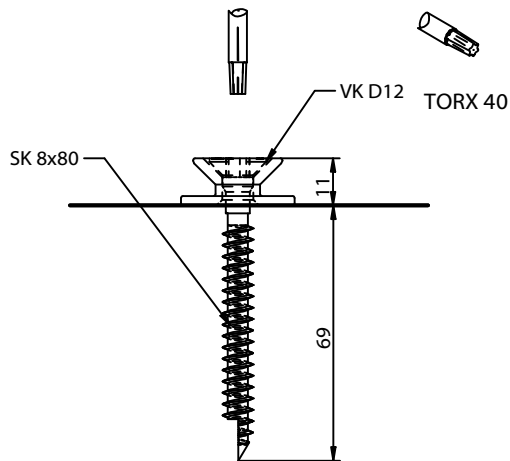
Pièce d'accroche vissée VK D12 Réf. K108



1. Percer sur le montant opposé à la ferrure d'accroche et dans son axe



2. Visser la pièce d'accroche en butée



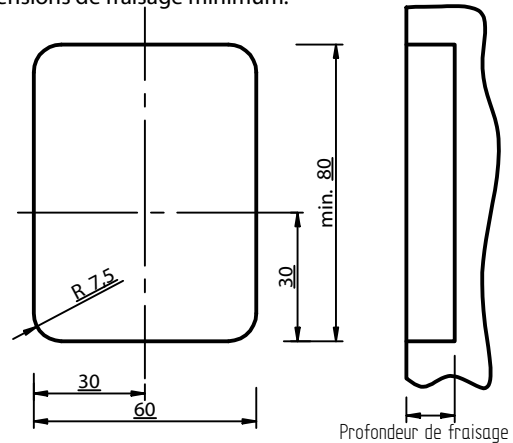
Remarque:

La hauteur peut se régler à l'aide de rondelles. La vis à filetage complet peut être pré-percée avec une mèche $\varnothing 5$ mm !

WALCO V 60 Ferrure d'accroche

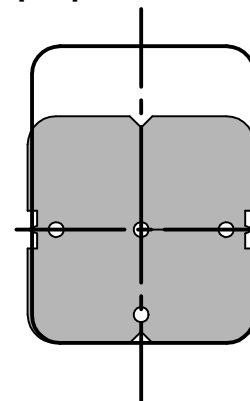
1. Usiner la poche d'encastrement de la ferrure d'accroche

Dimensions de fraisage minimum:

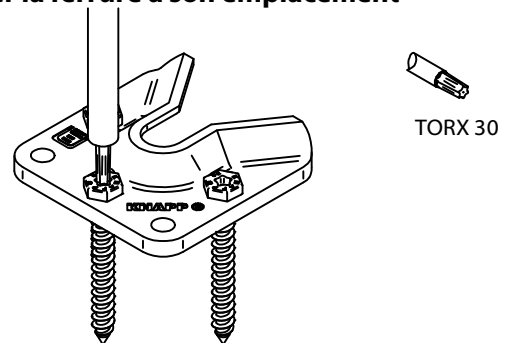


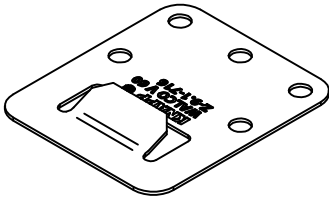
Prof. 11 mm - Montage facile avec 2 mm de jeu
Prof. 13 mm - Montage jointif sans jeu

2. Si besoin pointer les 3 vis de fixation pour la ferrure et pré-percer



3. Visser la ferrure à son emplacement



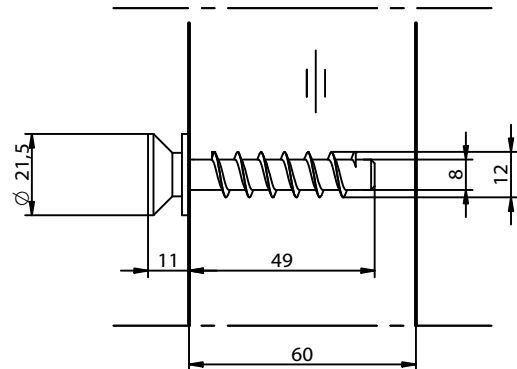
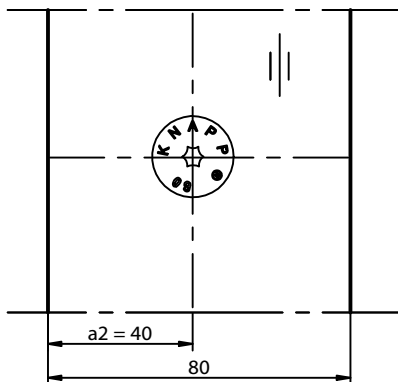
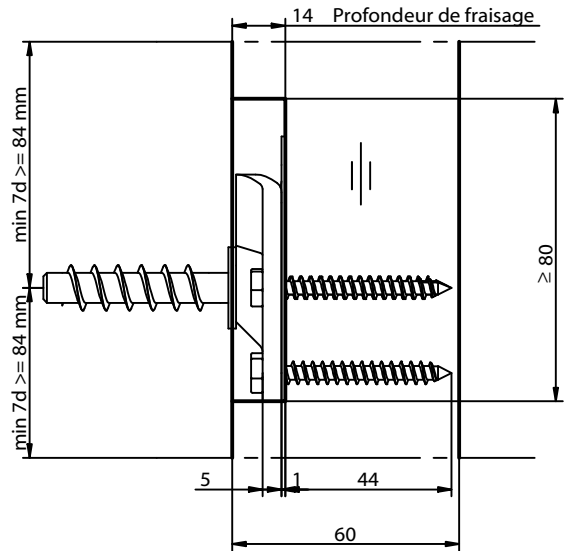
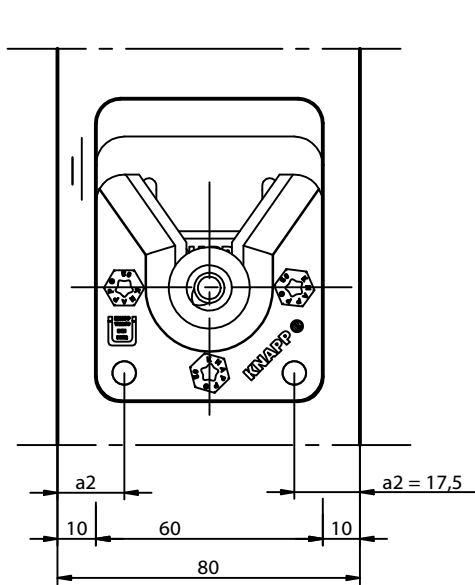


WALCO® V 60

Platine de verrouillage

Platine de verrouillage WALCO V60
Réf.: K112

WALCO V 60



1. Mise en position

2. Emboîter

3. Verrouillage automatique

