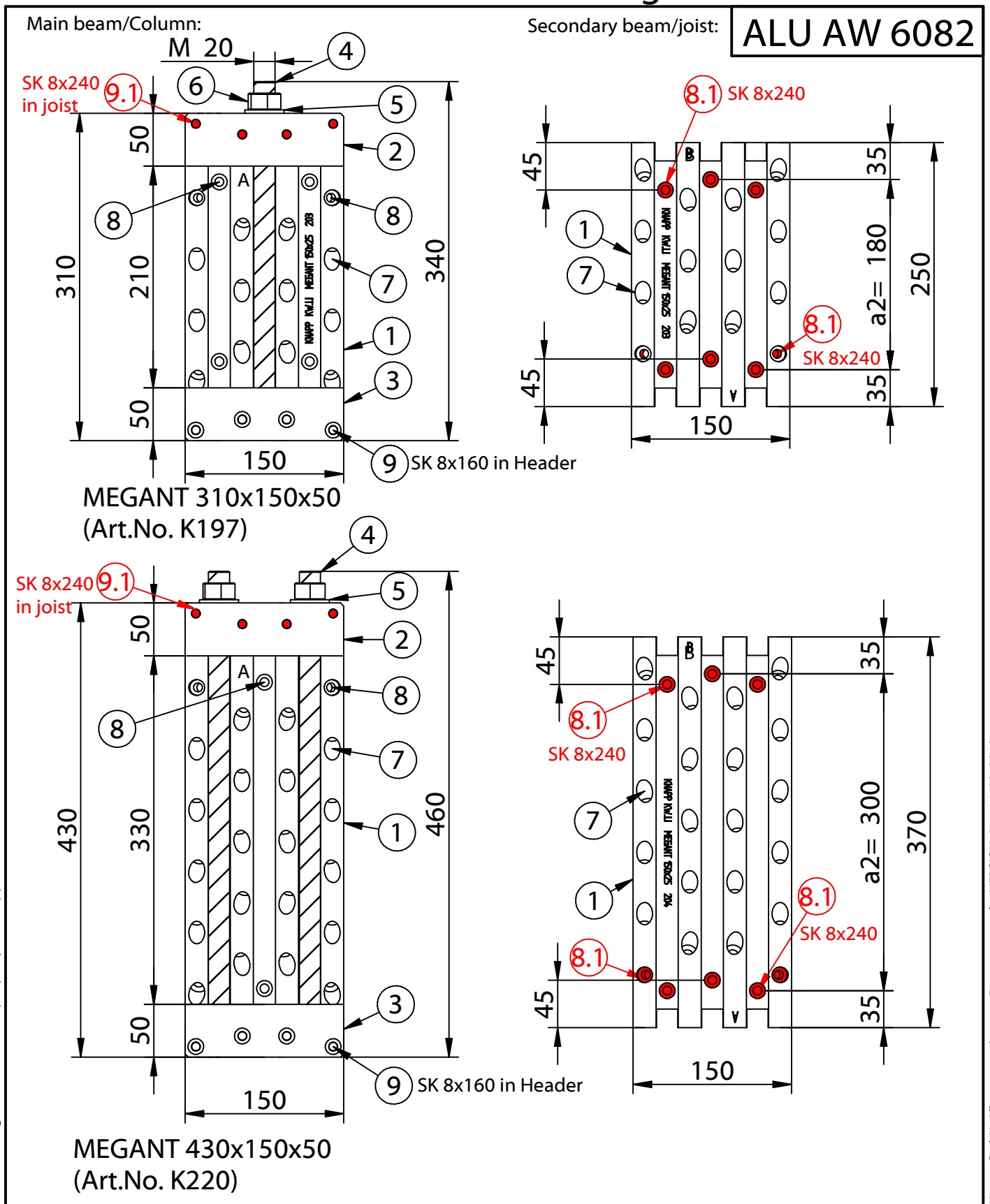


Mounting instructions

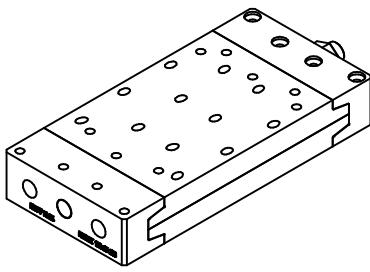
MEGANT® 150x50

Regular sizes overview



This drawing is the exclusive property of Knapp GmbH

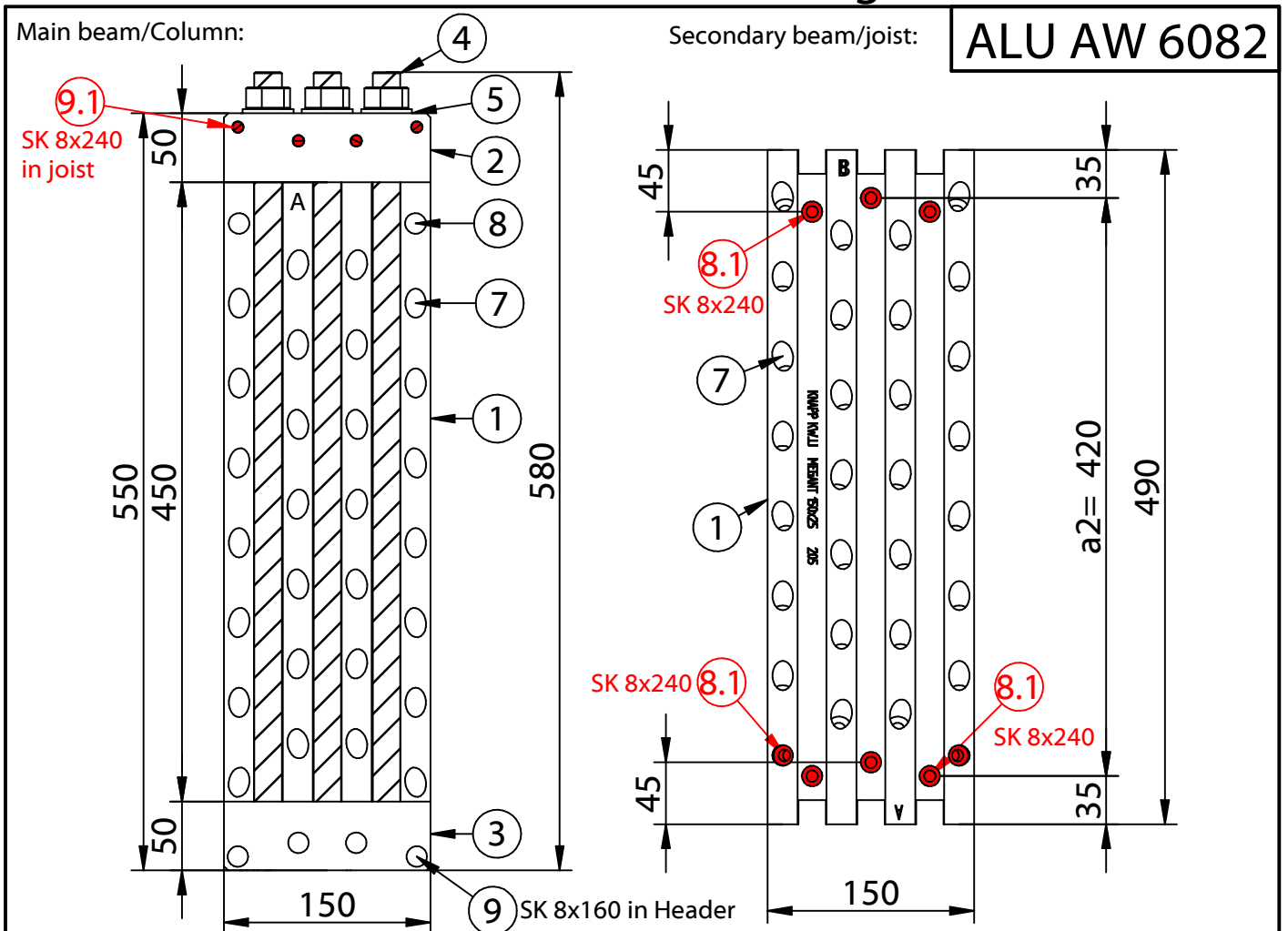
Knapp GmbH. All measures in mm - Errors excepted. VERSION 3 14.08.2018



Mounting instructions

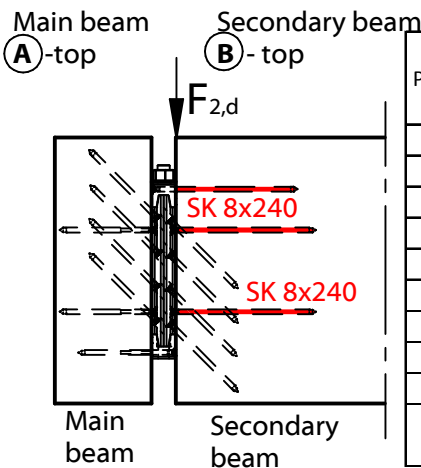
MEGANT® 150x50

Regular size overview



MEGANT 550x150x50
(Art.No. K221)

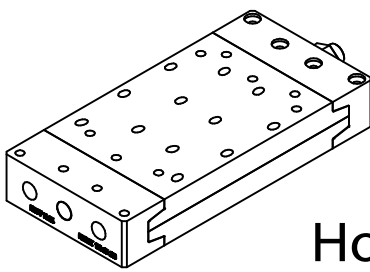
Connector plate specs



Pos No.	Art. No.	Part description	MEGANT® series		
			310x150x50 Art.No. K197	430x150x50 Art. No. K220	550x150x50 Art. No. K221
1	K197-221	Connector plates	250x150x25	370x150x25	490x150x25
2		Clamping jaws top	50x50x150; D20	50x50x150; D20	50x50x150; D20
3		Clamping jaws bottom	50x50x150; M20	50x50x150; M20	50x50x150; M20
4		Threaded rod	1xM20x340	2xM20x460	2xM20x580
5		Washer	1xM20	2xM20	2xM20
6		Nut	1xM20	2xM20	2xM20
7	Z581	Inclines screws	24x SK8x160	40x SK8x160	56x SK8x160
8	Z581	Horizontal screws	8x SK8x160	8x SK8x160	8x SK8x160
8.1	Z672	Horizontal screws	8x SK8x240	8x SK8x240	8x SK8x240
9	Z581	Screws clamping jaw	4x SK8x160	4x SK8x160	4x SK8x160
9.1	Z672	Screws clamping jaw	4 SK 8x240	4 SK 8x240	4 SK 8x240

This drawing is the exclusive property of Knapp GmbH

Knapp GmbH. All measures in mm - Errors excepted. VERSION 3 14.08.2018

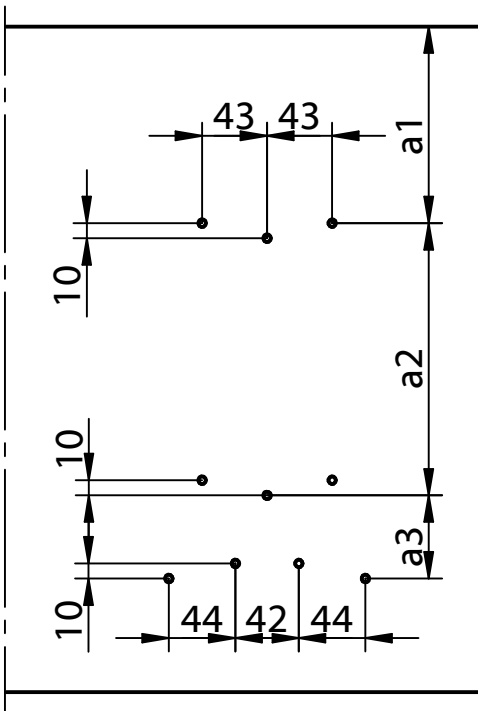


MEGANT® 150x50

Hole pattern for visible central installation

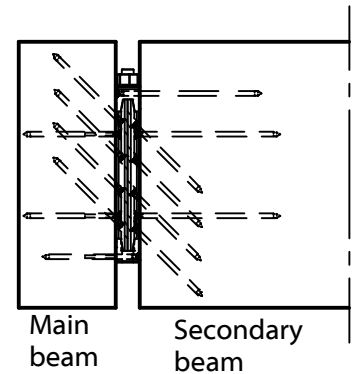
ALU AW 6082

Pre-drill layout in main beam !

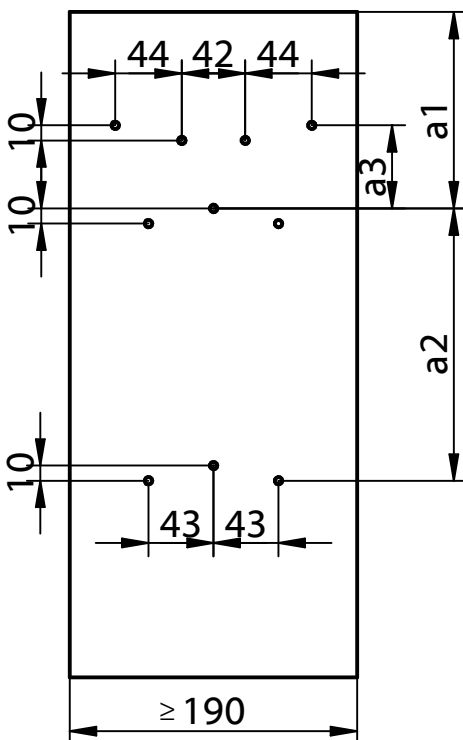


Softwood:
10x drillings
Ø 5mm,
depth 30 mm

Hardwood:
10x drillings
Ø 6mm,
depth screw
length~120 mm



Drilling positions for centered mounting in secondary beam !



Softwood:
10x drillings
Ø 5mm,
depth 30 mm

Hardwood:
10x drillings
Ø 6mm,
depth screw
length~120 mm

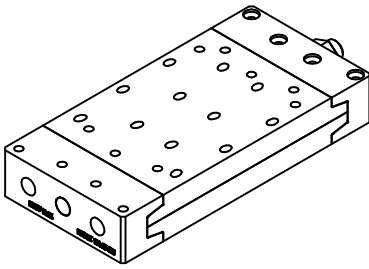
Pre-drilling visible installation of connector			
Secondary beam	Pre-drill spacings a1 with respect to secondary beam member height H _N [mm]		
Height	MEGANT®	MEGANT®	MEGANT®
H _N [mm]	310x150	430x150	550x150
360	90		
400	110		
440	130		
480	150		
520	170	110	
560	190	130	
600	210	150	
640		170	110
680		190	130
720		210	150
760		230	170
800		250	190
840		270	210
880		290	230
920		310	250
960			270
1000			290

Distances	MEGANT®	MEGANT®	MEGANT®
	310x150	430x150	550x150
a2 [mm]	180	300	420
a3 [mm]	55	55	55

MEGANT marking templates for horizontal drilling are available in different sizes upon request.

This drawing is the exclusive property of Knapp GmbH

Knapp GmbH. All measures in mm - Errors excepted. VERSION 3 14.08.2018

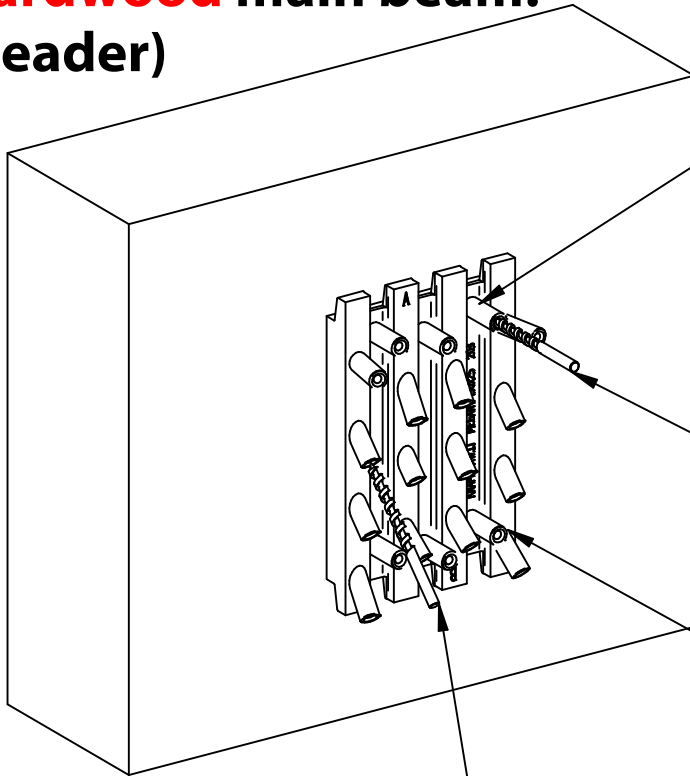


MEGANT® 150x50

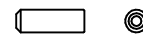
Pre-drill Megant in **Hardwood**

ALU AW 6082

Hardwood main beam: (header)



1.) Plug in Megant-KNAPP-drill-bushing into connector plate !

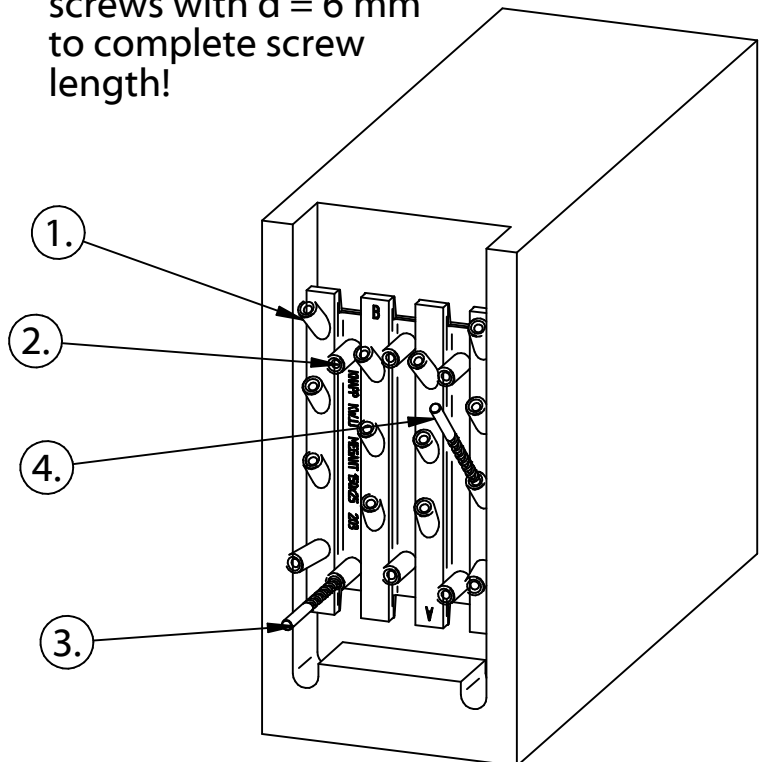


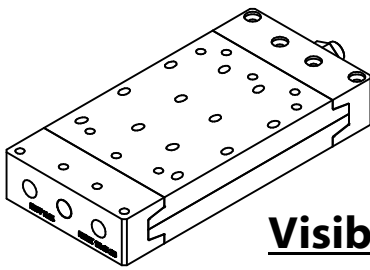
2.) Pre-drill horizontal screws with $d = 6$ mm to complete screw length

3.) Fix the template in the horizontal bore holes

4.) Pre-drill the oblique screws with $d = 6$ mm to complete screw length!

Hardwood secondary beam: (joist)



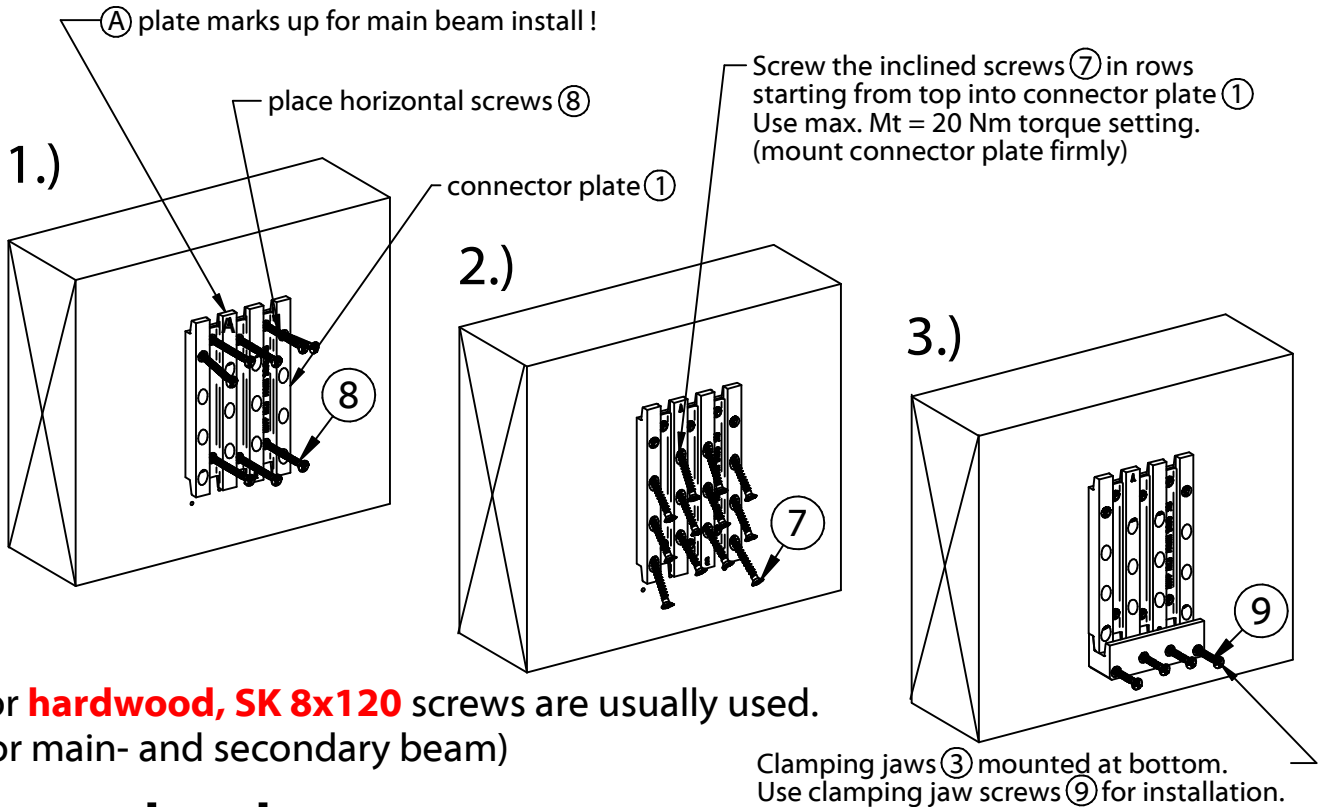


MEGANT® 150x50

Visible Megant installation in main- and secondary beam

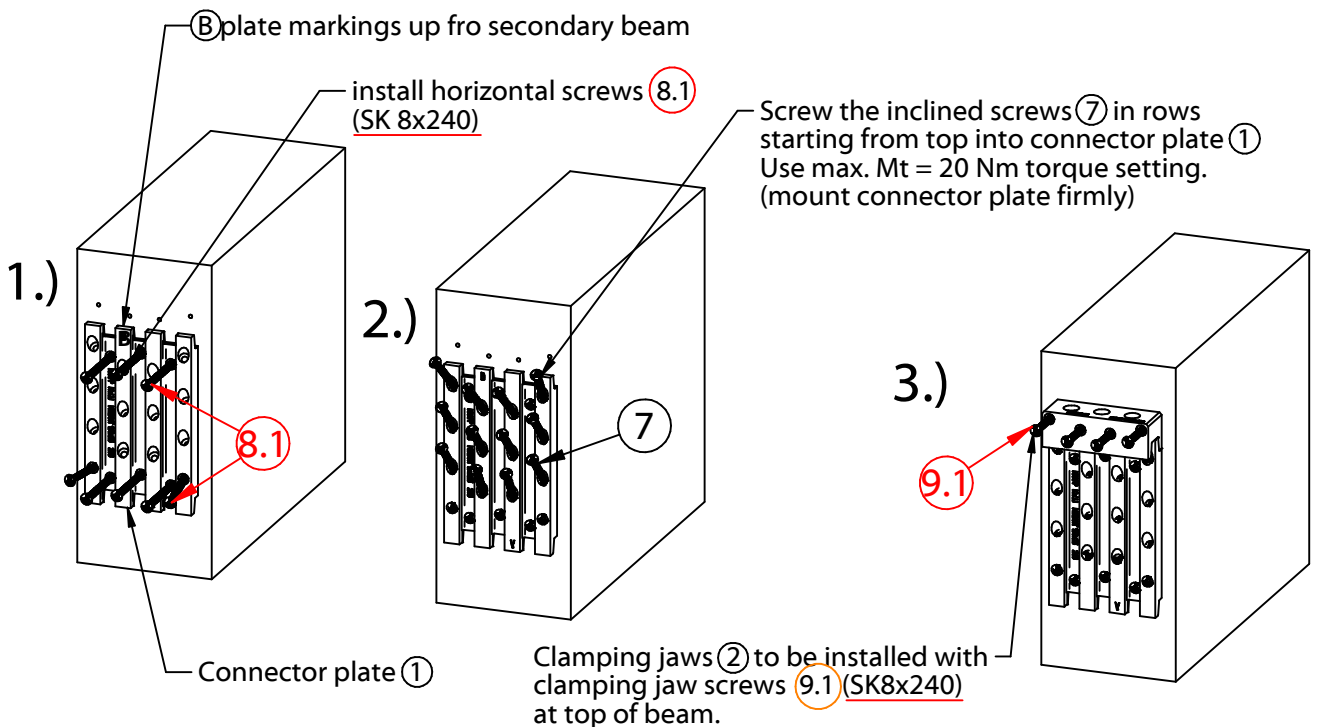
ALU AW 6082

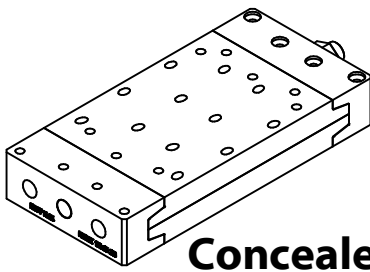
Main beam



For **hardwood**, **SK 8x120** screws are usually used.
(for main- and secondary beam)

Secondary beam



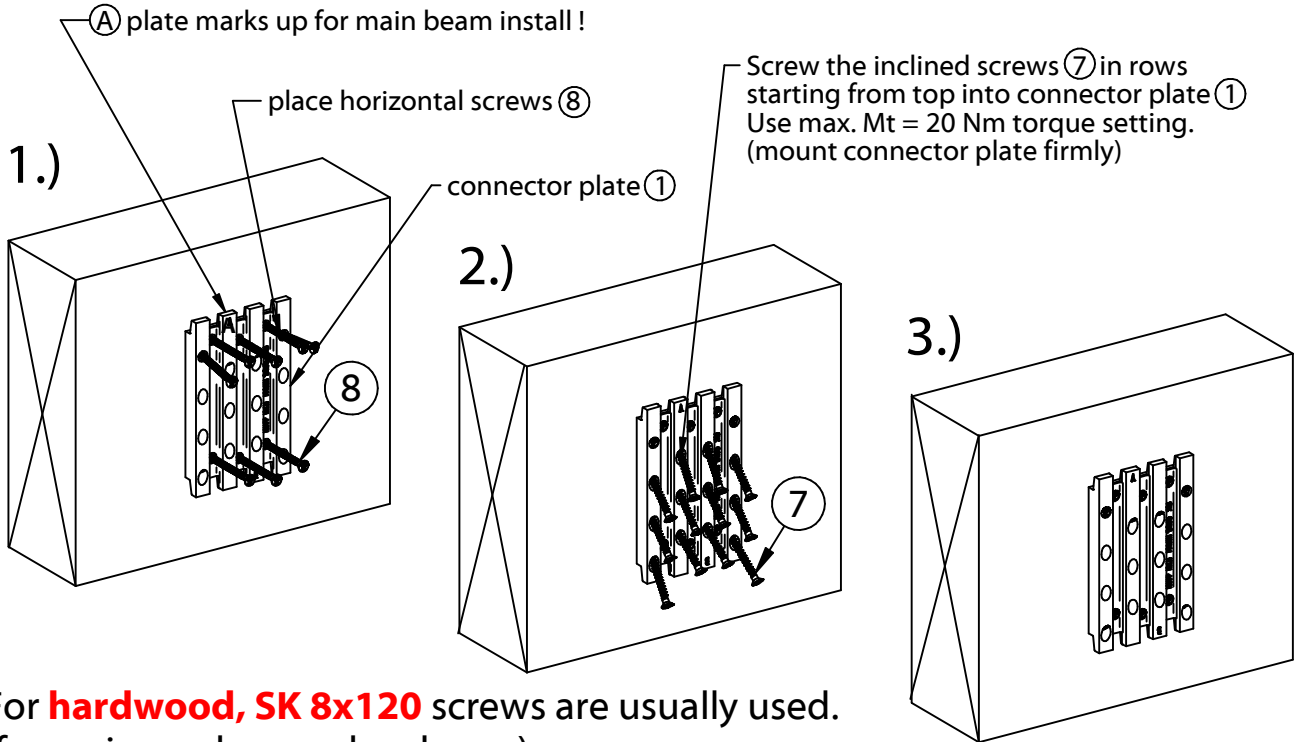


MEGANT® 150x50

Concealed Megant installation in main- and secondary beam

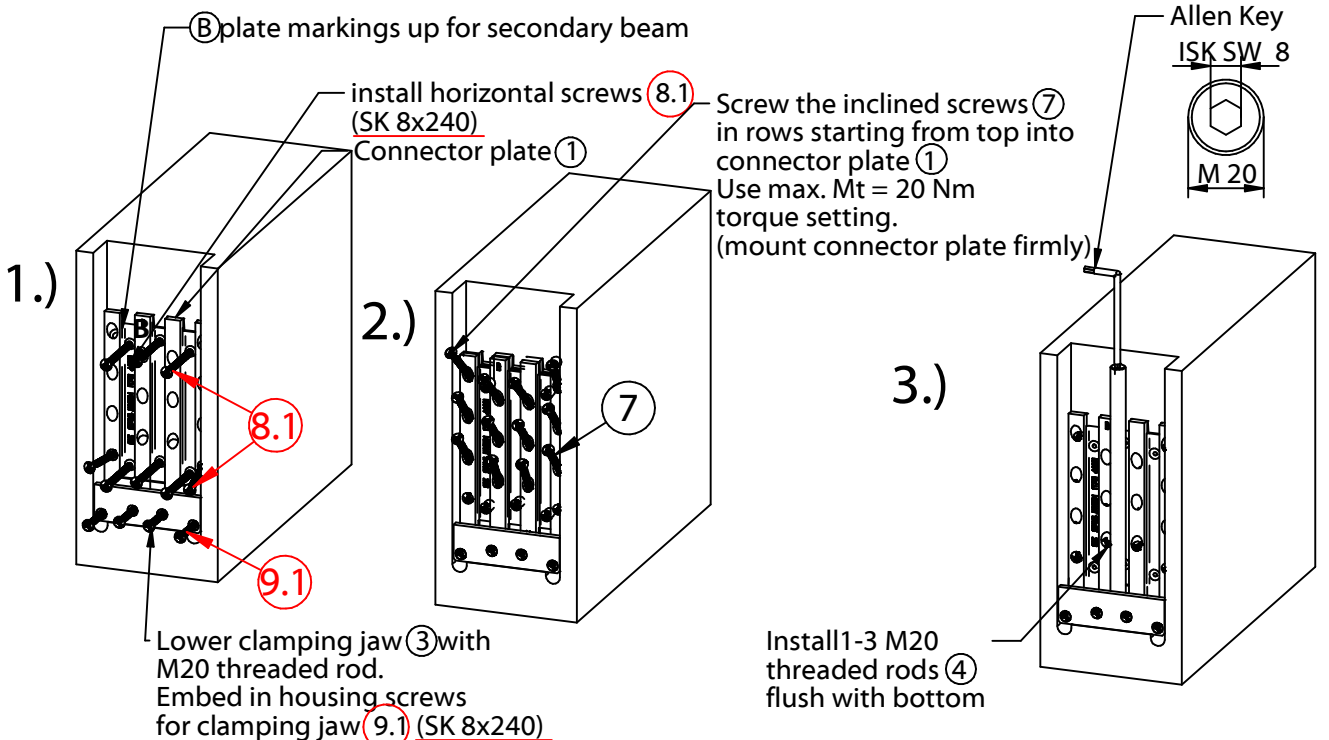
ALU AW 6082

Main beam



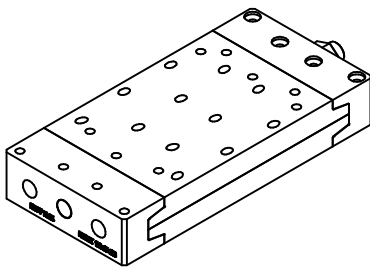
For **hardwood**, **SK 8x120** screws are usually used.
(for main- and secondary beam)

Secondary beam



This drawing is the exclusive property of Knapp GmbH

Knapp GmbH. All measures in mm - Errors excepted. VERSION 3 14.08.2018



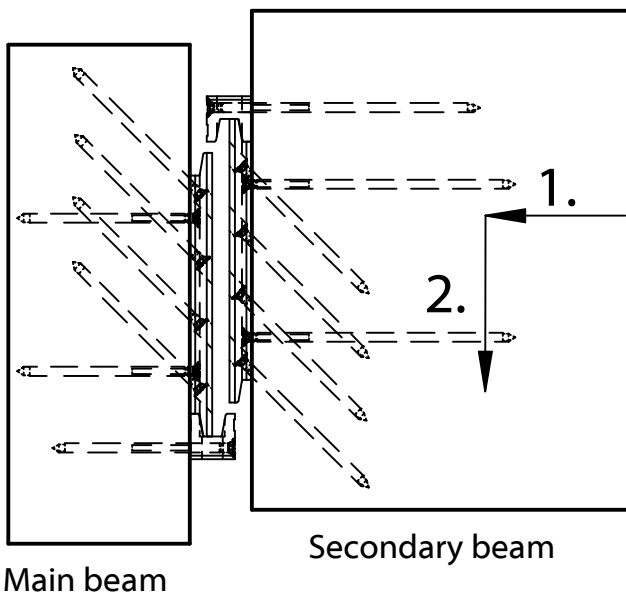
Mounting instructions

MEGANT® 150x50

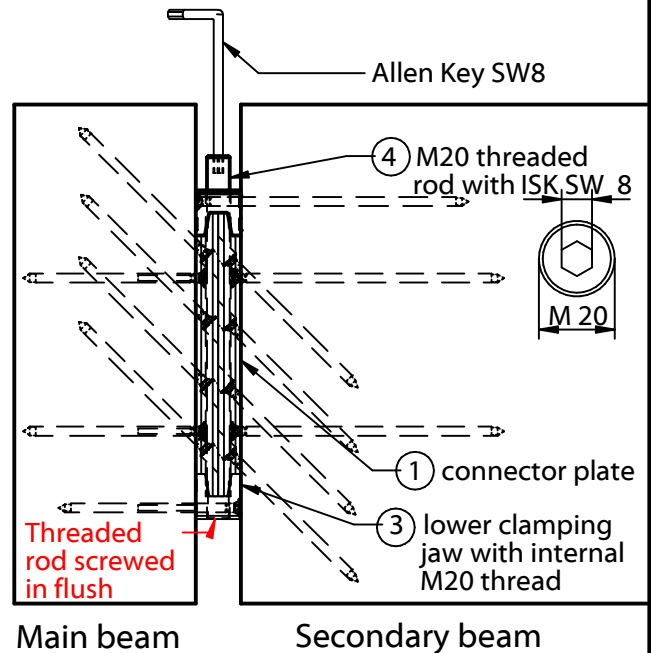
Visible installation

ALU AW 6082

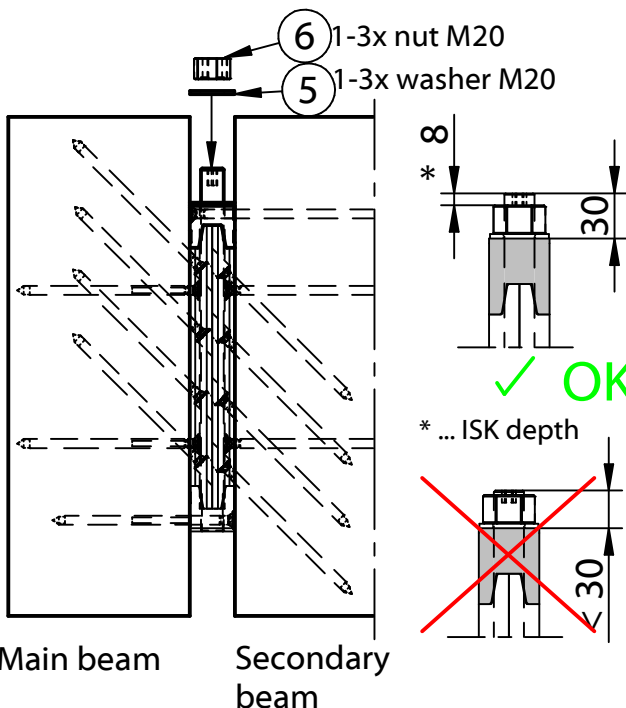
1. Install secondary beam



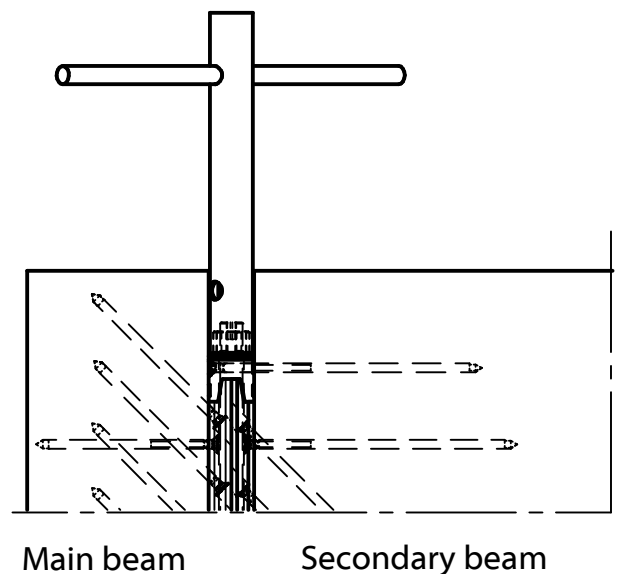
2. Install M20 threaded rod (4) in lower clamping jaw (3) flush



3. Install clamping jaw, washer and M 20 nut

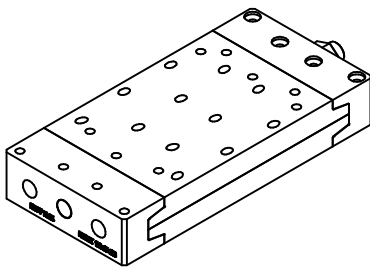


4. Tighten M20 nut with SW 30 wrench (40 Nm)!



This drawing is the exclusive property of Knapp GmbH

Knapp GmbH. All measures in mm - Errors excepted. VERSION 3 14.08.2018



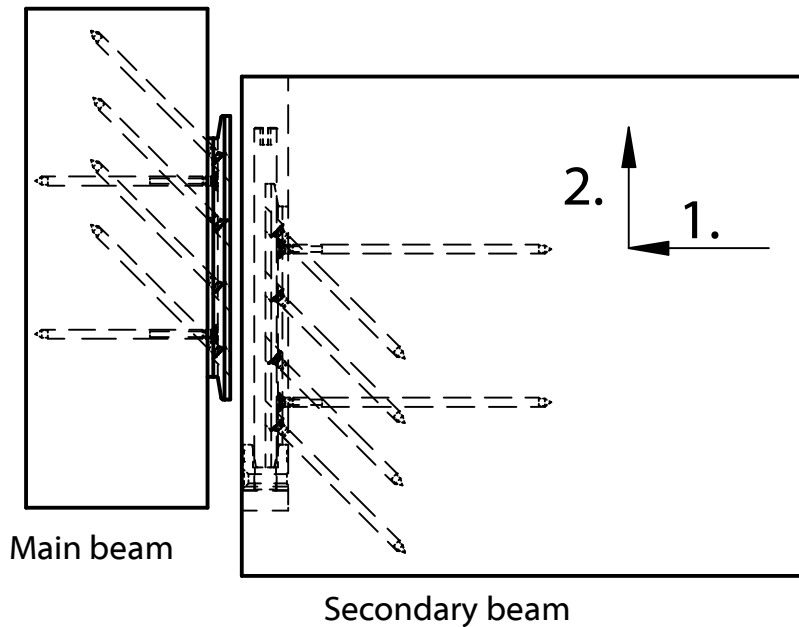
Mounting instructions

MEGANT® 150x50

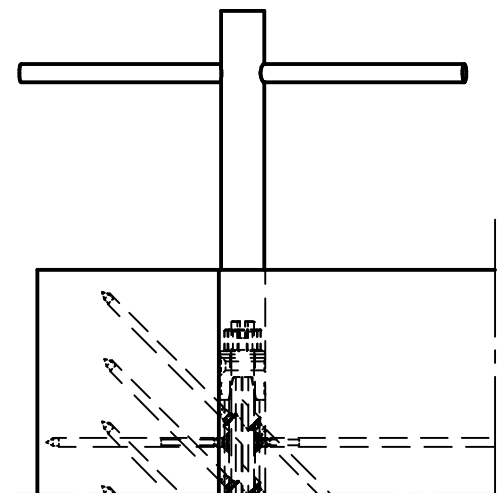
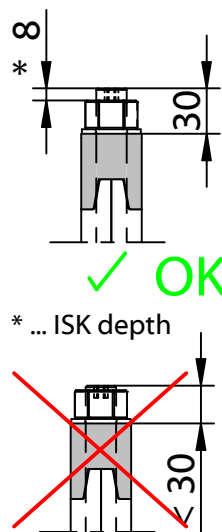
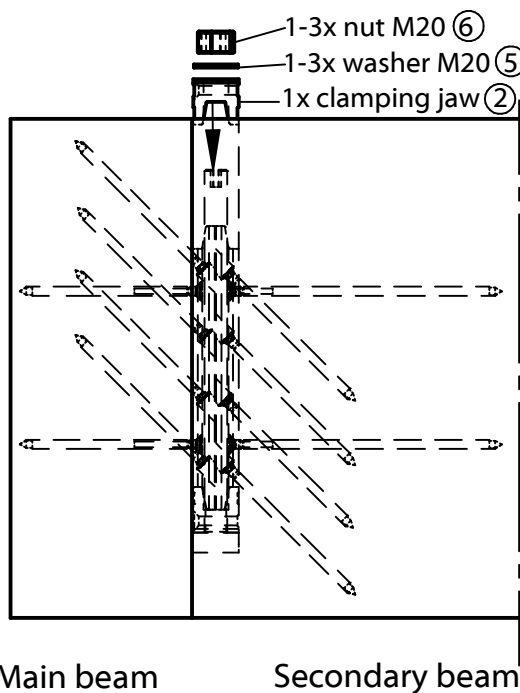
Concealed installation

1. Install from below secondary beam

ALU AW 6082



2. Put on and tighten clamping jaw, washer and M20 nut. Tighten M20 nut with SW 30 wrench (40 Nm)!



This drawing is the exclusive property of Knapp GmbH

Knapp GmbH. All measures in mm - Errors excepted. VERSION 3 14.08.2018