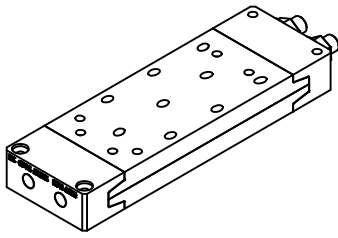
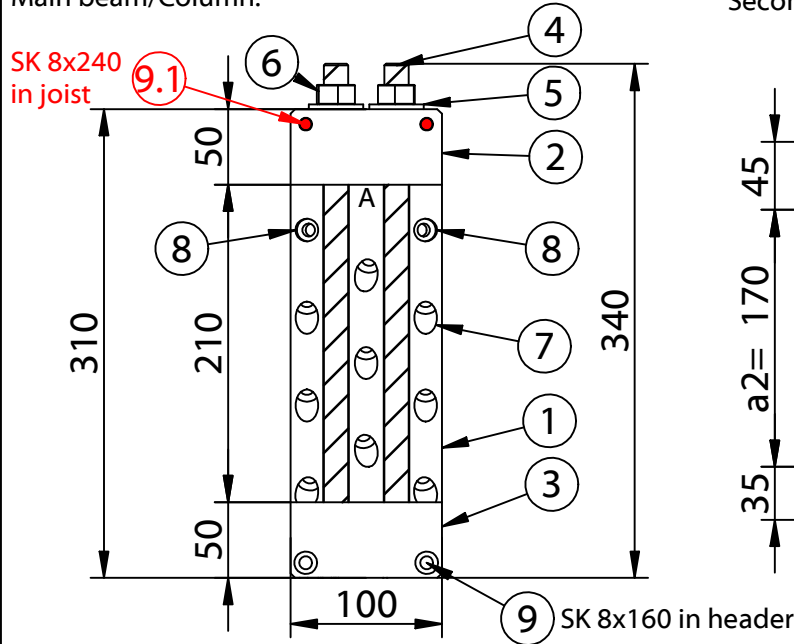


MEGANT® 100x40

Regular sizes overview



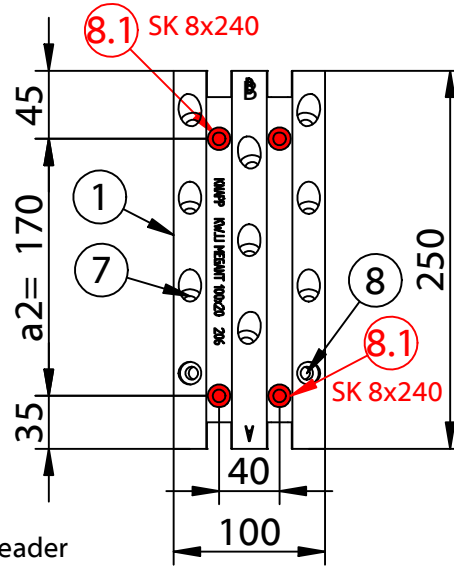
Main beam/Column:



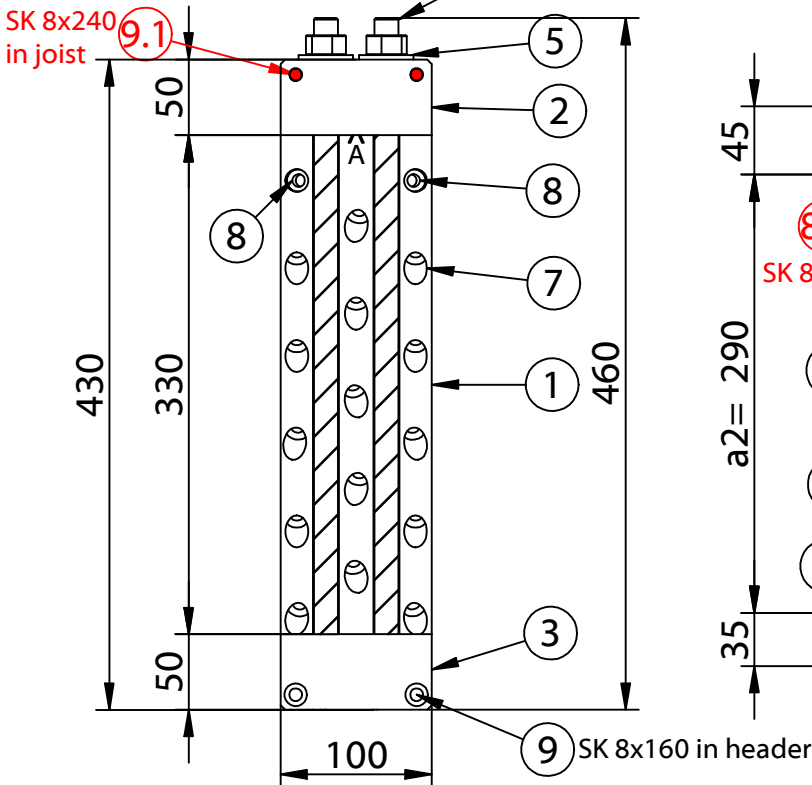
MEGANT 310x100x40
(Art.No. K239)

Secondary beam/joist:

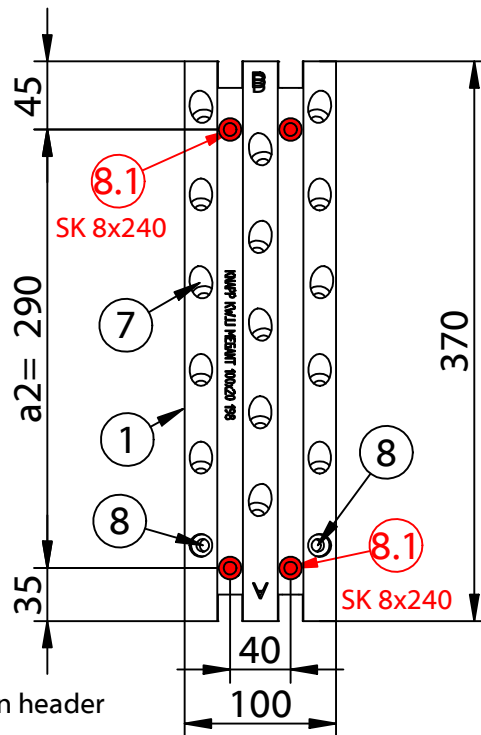
ALU AW 6082

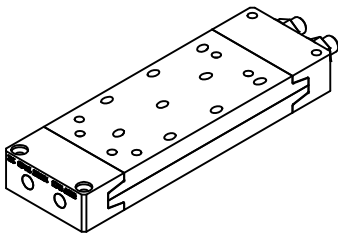


SK 8x240
in joist



MEGANT 430x100x40
(Art.No. K240)

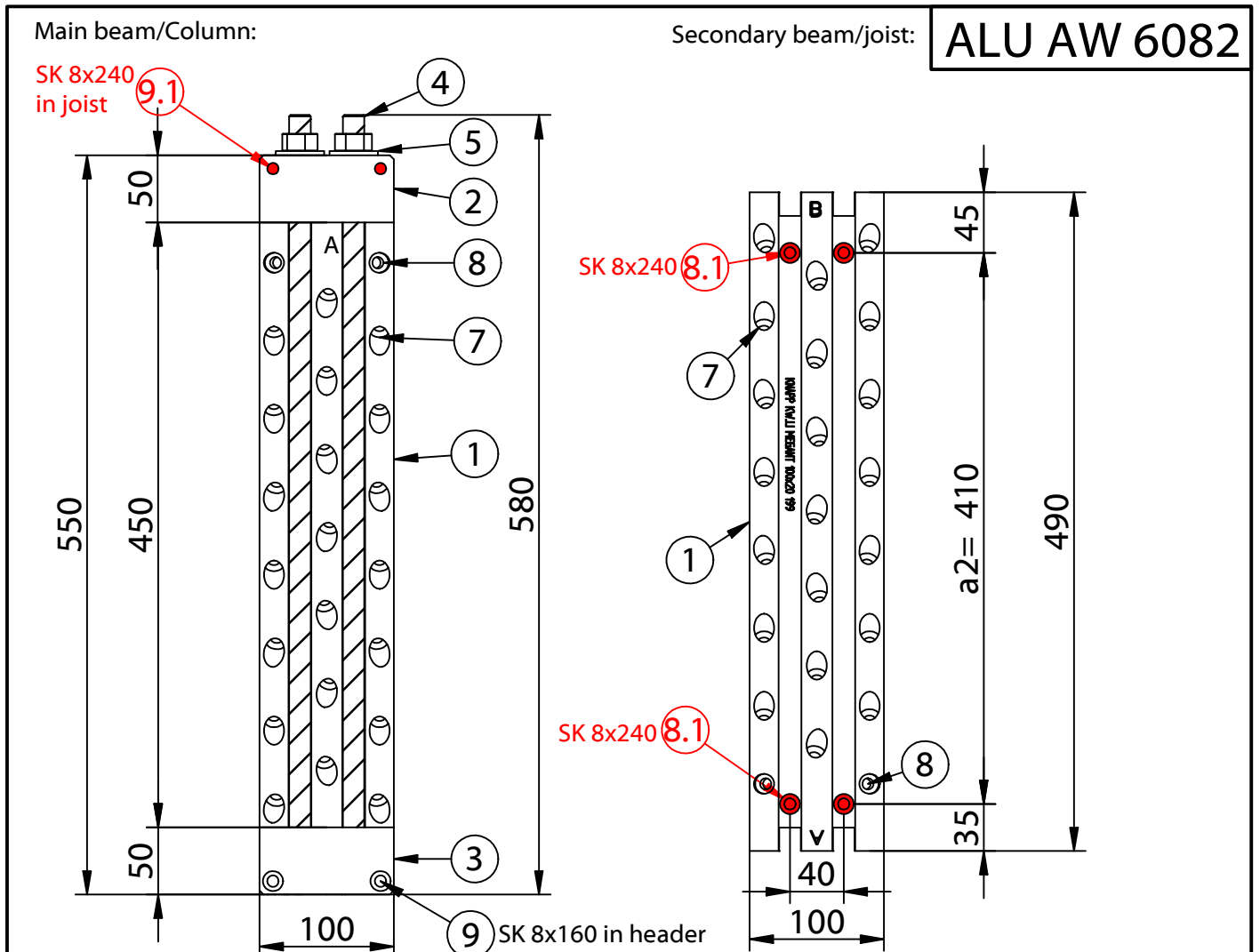




Mounting instructions

MEGANT® 100x40

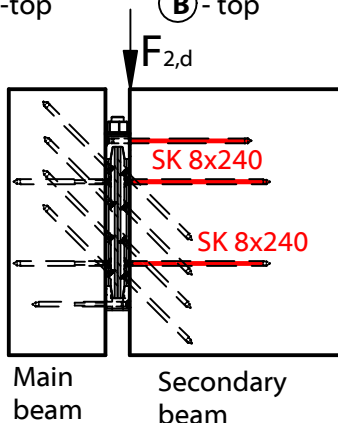
Regular size overview



MEGANT 550x100x40
(Art.No. K241)

Connector plate specs

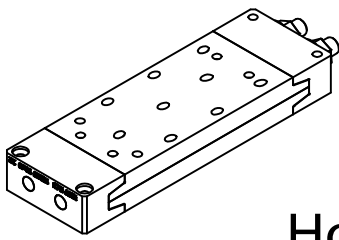
Main beam **A** - top Secondary beam **B** - top



Pos No.	Art. No.	Part description	MEGANT® sizes		
			310x100x40 Art.No. K239	430x100x40 Art. No. K240	550x100x40 Art. No. K241
1	K239-241	Connector plates	250x150x20	370x150x20	490x150x20
2		Clamping jaws top	100x50x40; D16	100x50x40; D16	100x50x40; D16
3		Clamping jaws bottom	100x50x40; M16	100x50x40; M16	100x50x40; M16
4		Threaded rod	2xM16x340	2xM16x460	2xM16x580
5		Washer	2xM16	2xM16	2xM16
6		Nut	2xM16	2xM16	2xM16
7	Z581	Inclines screws	18x SK8x160	30x SK8x160	42x SK8x160
8	Z581	Horizontal screws	8x SK8x160	8x SK8x160	8x SK8x160
8.1	Z672	Horizontal screws	4x SK8x240	4x SK8x240	4x SK8x240
9	Z581	screws clamping jaw	2x SK8x160	2x SK8x160	2x SK8x160
9.1	Z672	screws clamping jaw	2x SK 8x240	2x SK 8x240	2x SK 8x240

This drawing is the exclusive property of Knapp GmbH

Knapp GmbH. All measures in mm - Errors excepted. VERSION 3 14.08.2018

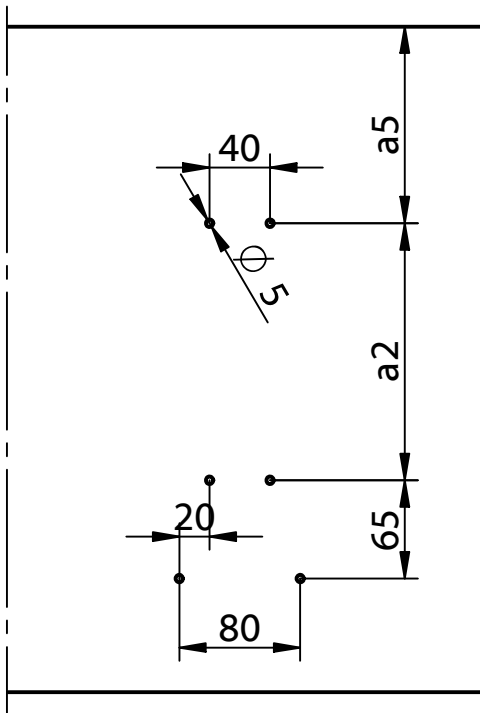


MEGANT® 100x40

Hole pattern for visible central installation

ALU AW 6082

Pre-drill layout in main beam !

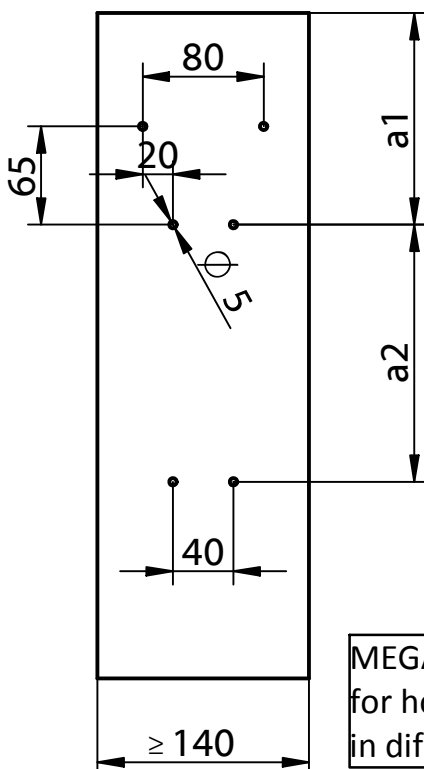


Softwood:
6x drillings
Ø 5mm,
depth 30 mm

Hardwood:
6x drillings
Ø 6mm,
depth screw
length ~120 mm

Pre-drilling visible installation of connector in main beam			
Secondary beam	Pre-drill spacings a5 with respect to secondary beam member height HN		
Heigth	MEGANT®	MEGANT®	MEGANT®
H _N [mm]	310x100	430x100	550x100
400	110		
440	130		
480	150		
520	170	110	
560	190	130	
600	210	150	
640		170	110
680		190	130
700		200	140
720		210	150
760		230	170
800		250	190
840		270	210
880		290	230
920			250
960			270
1000			290

Drilling positions for centered mounting in secondary beam !



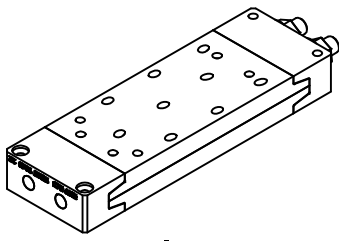
Softwood:
6x drillings
Ø 5mm,
depth 30 mm

Hardwood:
6x drillings
Ø 6mm,
depth screw
length ~120 mm

Distance	MEGANT®	MEGANT®	MEGANT®
	310x100	430x100	550x100
a2 [mm]	170	290	410
a3 [mm]	55	55	55
a4 [mm]	65	65	65

Pre-drilling visible installation of connector in joist			
Secondary beam	Pre-drill spacings a1 with respect to secondary beam member height HN		
Heigth	MEGANT®	MEGANT®	MEGANT®
H _N [mm]	310x100	430x100	550x100
400	120		
440	140		
480	160		
520	180	120	
560	200	140	
600	220	160	
640		180	120
680		200	140
700		210	150
720		220	160
760		240	180
800		260	200
840		280	220
880		300	240
920			260
960			280
1000			300

MEGANT marking templates for horizontal drilling are available in different sizes upon request.



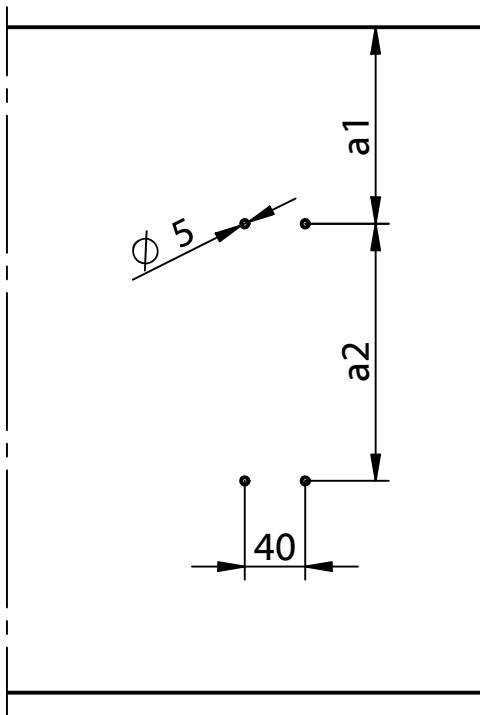
Mounting instructions

MEGANT® 100x40

Hole pattern for **concealed central installation in header**

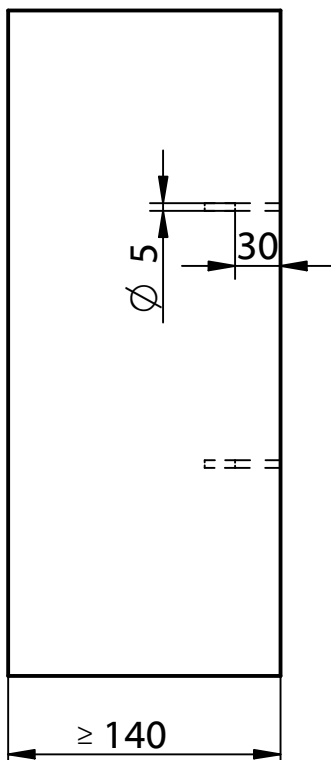
ALU AW 6082

Pre-drill layout in main beam !



Softwood:
4x drillings
Ø 5mm,
depth 30 mm

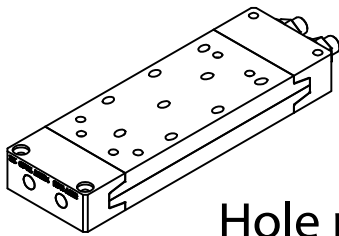
Hardwood:
4x drillings
Ø 6mm,
depth screw
length ~120 mm



Pre-drilling centered installation of connector in main beam			
Secondary beam	Pre-drill spacings a1 with respect to secondary beam member height HN		
Heigth	MEGANT®	MEGANT®	MEGANT®
H _N [mm]	310x100	430x100	550x100
400	110		
440	130		
480	150		
520	170	110	
560	190	130	
600	210	150	
640		170	110
680		190	130
700		200	140
720		210	150
760		230	170
800		250	190
840		270	210
880		290	230
920			250
960			270
1000			290

Distance	MEGANT®	MEGANT®	MEGANT®
	310x100	430x100	550x100
a2 [mm]	170	290	410
a3 [mm]	55	55	55
a4 [mm]	65	65	65

MEGANT marking templates for horizontal drilling are available in different sizes upon request.

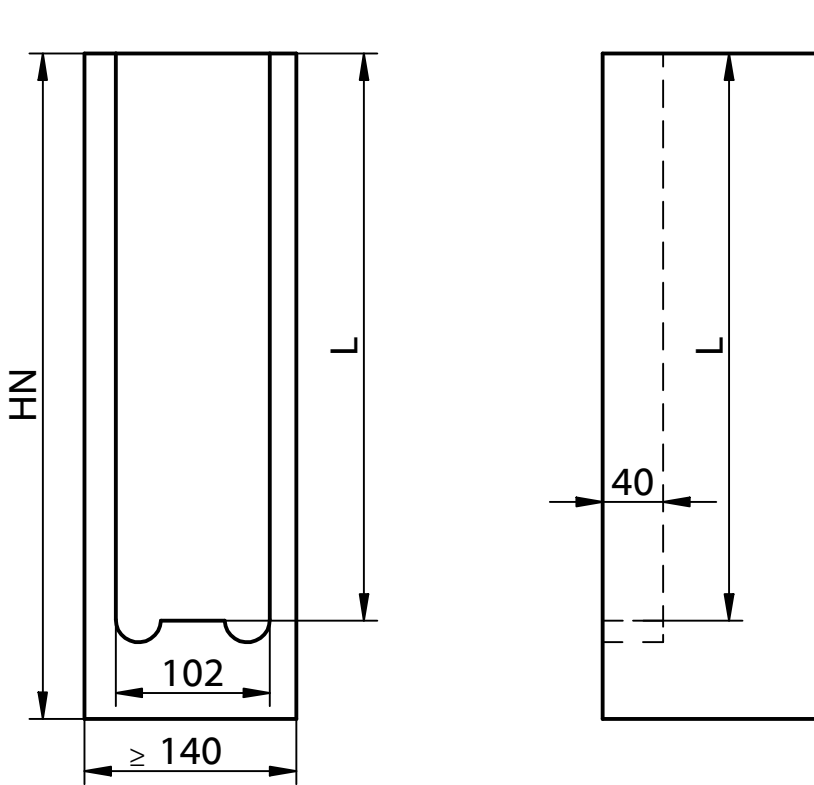


MEGANT® 100x40

Hole pattern for concealed central installation in joist

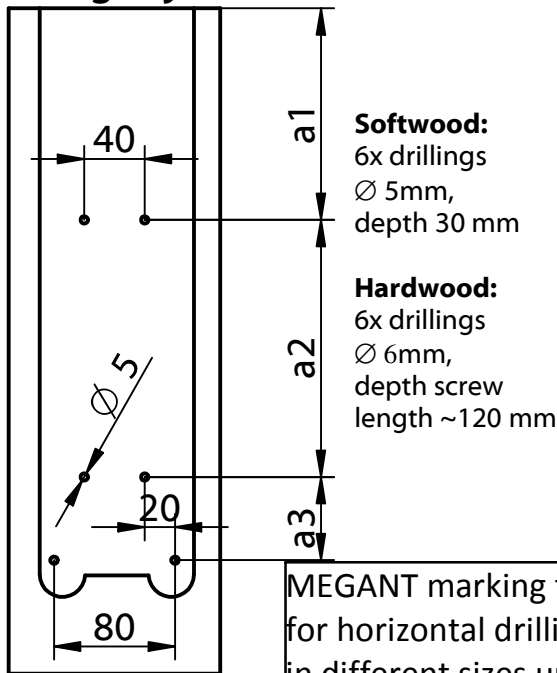
3-sided concealed cut out for central locations in the joist (Hang the joist from below)!

ALU AW 6082



Secondary beam Height H_N [mm]	Housing length L with respect to secondary beam member height H_N		
	MEGANT®	MEGANT®	MEGANT®
310x100			
430x100			
550x100			
400	355		
440	375		
480	395		
520	415	475	
560	435	495	
600	455	515	
640		535	595
680		555	615
700		565	625
720		575	635
760		595	655
800		615	675
840		635	695
880		655	715
920			735
960			755
1000			775

Drilling/routing positions for centered mounting in joist !



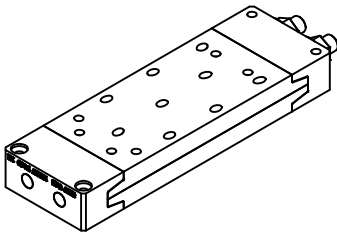
MEGANT marking templates for horizontal drilling are available in different sizes upon request.

Pre-drilling centered installation of connector			
Secondary beam Height H_N [mm]	Pre-drill spacings a_1 with respect to secondary beam member height H_N		
	MEGANT®	MEGANT®	MEGANT®
310x100			
430x100			
550x100			
400	120		
440	140		
480	160		
520	180	120	
560	200	140	
600	220	160	
640		180	120
680		200	140
700		210	150
720		220	160
760		240	180
800		260	200
840		280	220
880		300	240
920			260
960			280
1000			300

Distance	MEGANT®	MEGANT®	MEGANT®
	310x100	430x100	550x100
a_2 [mm]	170	290	410
a_3 [mm]	55	55	55
a_4 [mm]	65	65	65

This drawing is the exclusive property of Knapp GmbH

Knapp GmbH. All measures in mm - Errors excepted. VERSION 3 14. 08. 2018



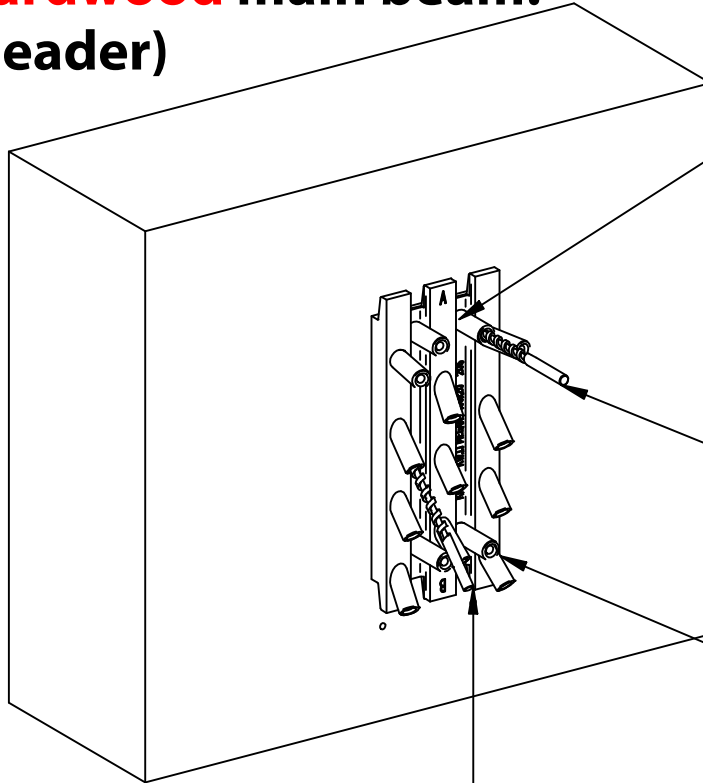
Mounting instructions

MEGANT® 100x40

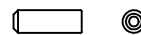
Pre-drill Megant in **Hardwood**

ALU AW 6082

Hardwood main beam: (header)



1.) Plug in Megant-KNAPP-drill-bushing into connector plate !

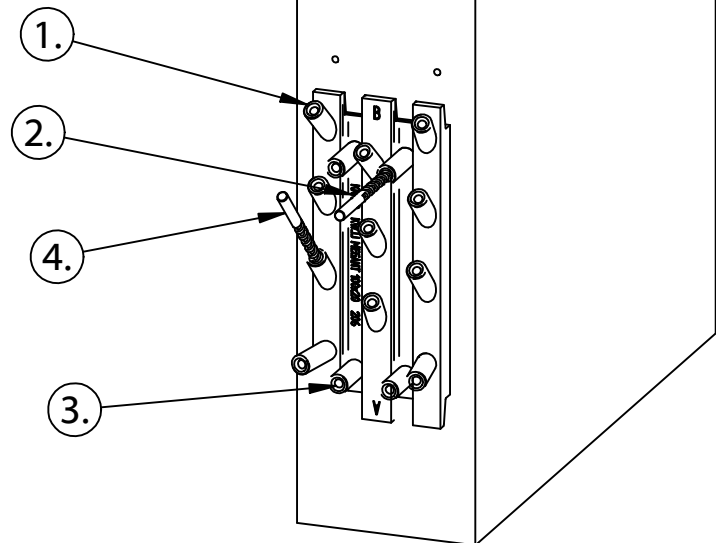


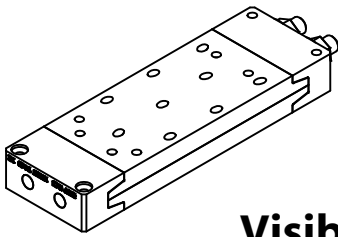
2.) Pre-drill horizontal screws with $d = 6$ mm to complete screw length

3.) Fix the template in the horizontal bore holes

4.) Pre-drill the oblique screws with $d = 6$ mm to complete screw length!

Hardwood secondary beam: (joist)



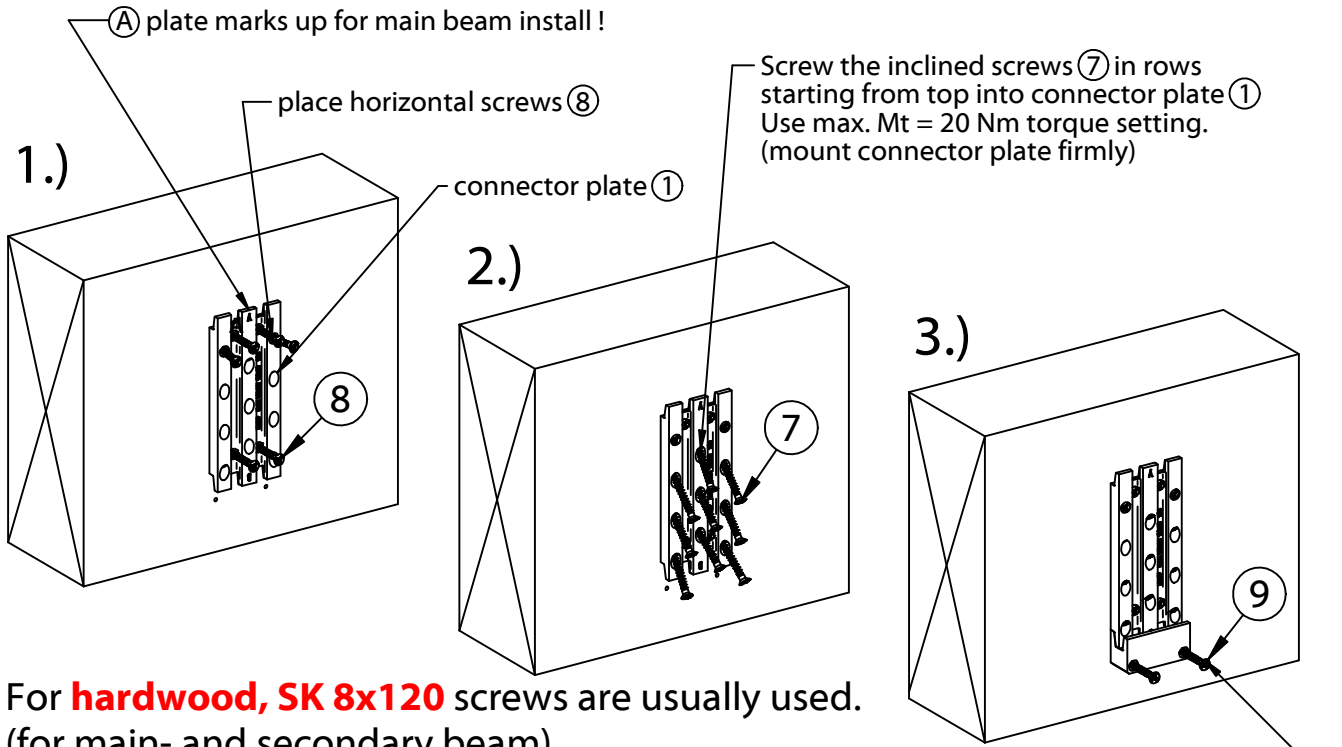


MEGANT® 100x40

Visible Megant installation in main- and secondary beam

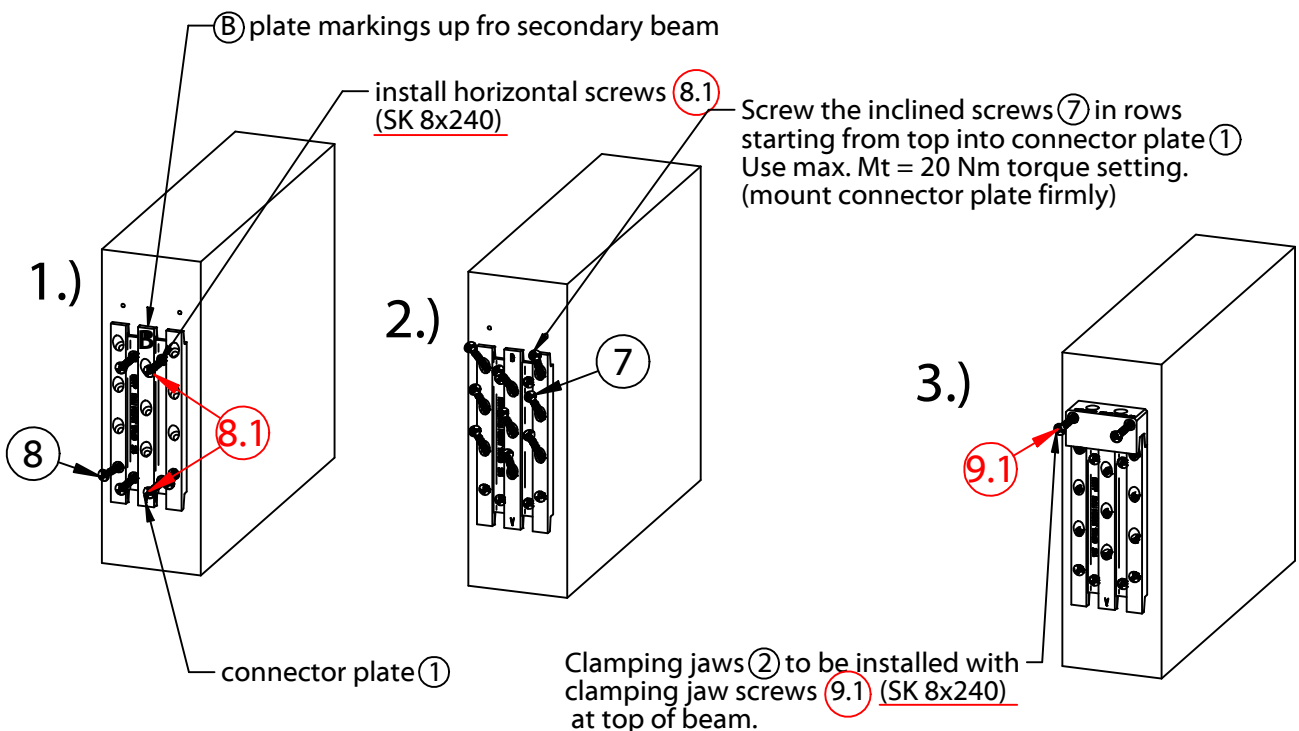
ALU AW 6082

Main beam (Header)



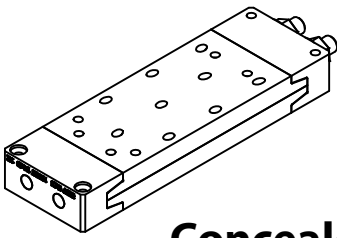
For **hardwood**, **SK 8x120** screws are usually used.
(for main- and secondary beam)

Secondary beam (joist)



This drawing is the exclusive property of Knapp GmbH

Knapp GmbH. All measures in mm - Errors excepted. VERSION 3 14.08.2018

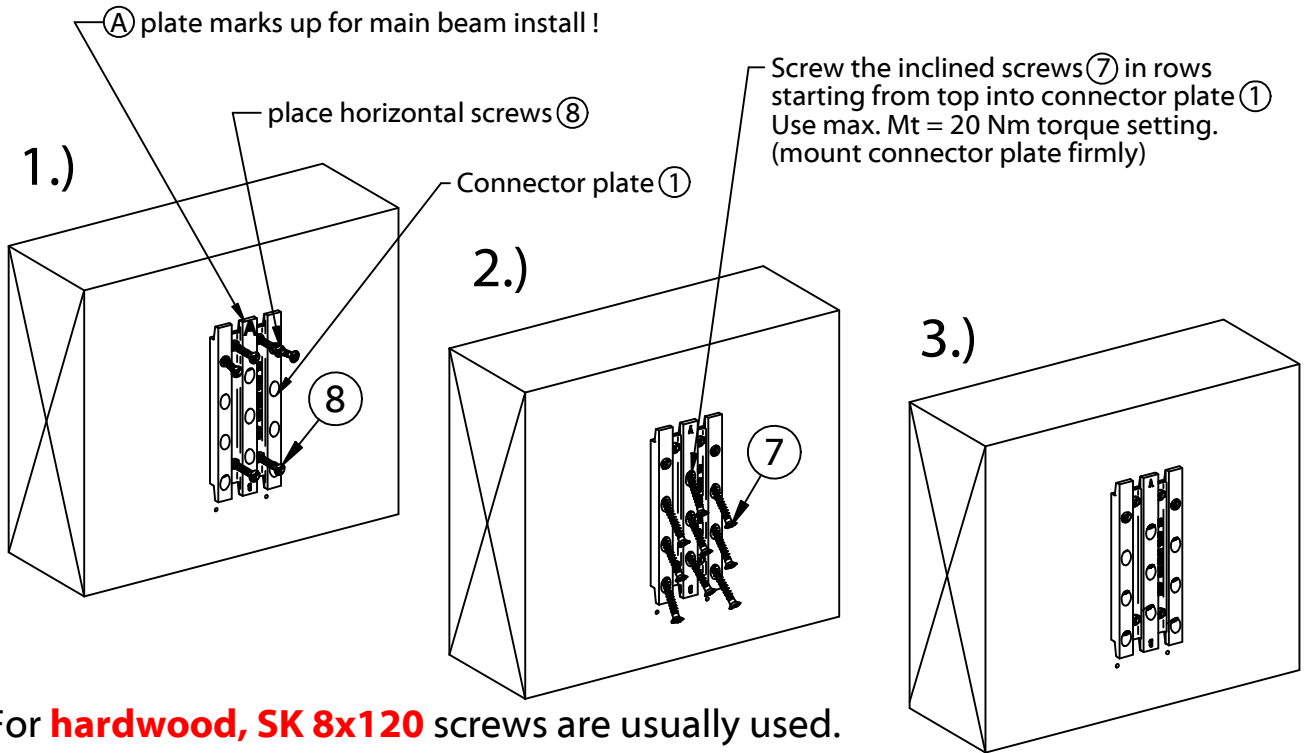


MEGANT® 100x40

Concealed Megant installation in main- and secondary beam

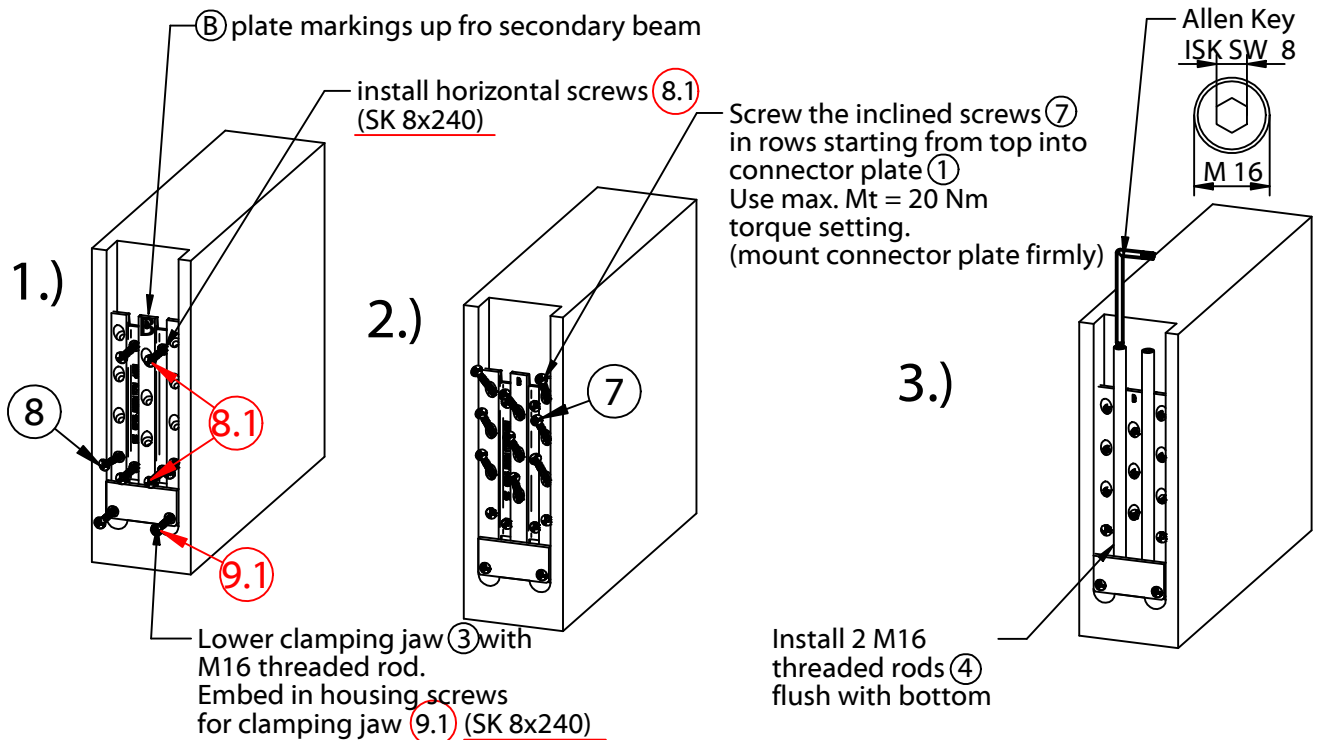
Main beam (Header)

ALU AW 6082



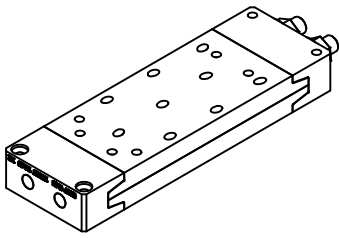
For **hardwood**, **SK 8x120** screws are usually used.
(for main- and secondary beam)

Secondary beam (Joist)



This drawing is the exclusive property of Knapp GmbH

Knapp GmbH. All measures in mm - Errors excepted. VERSION 3 14. 08. 2018

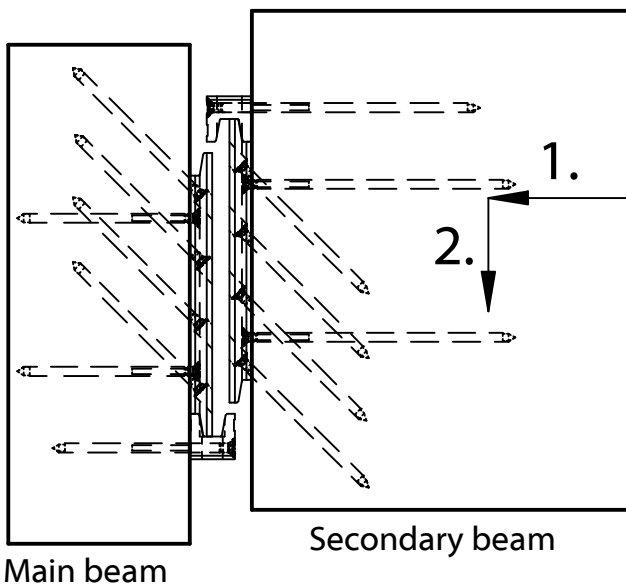


MEGANT® 100x40

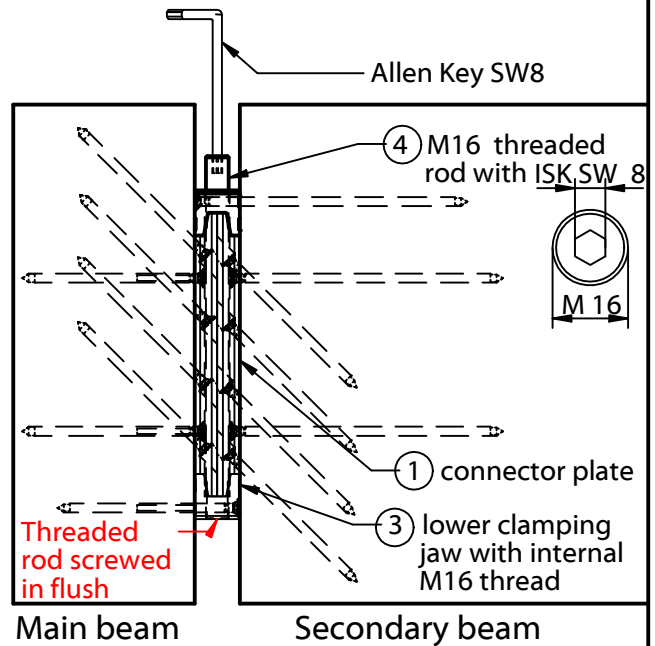
Visible installation

ALU AW 6082

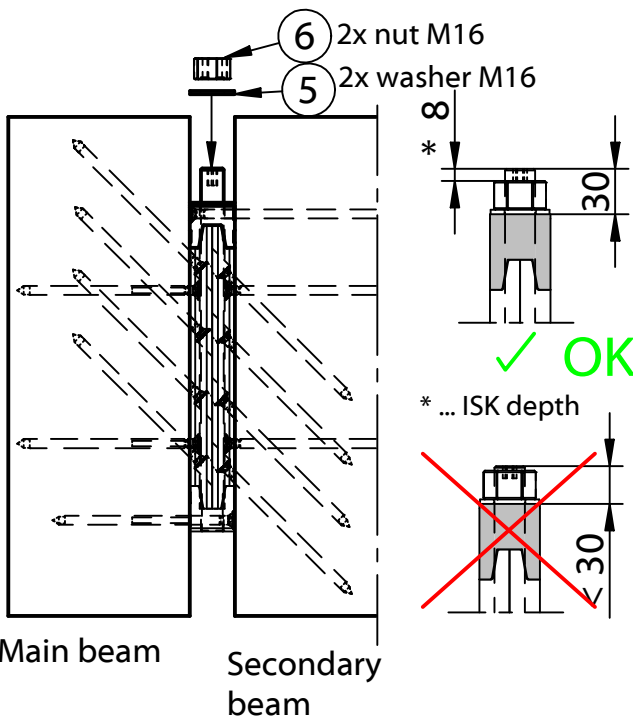
1. Install secondary beam



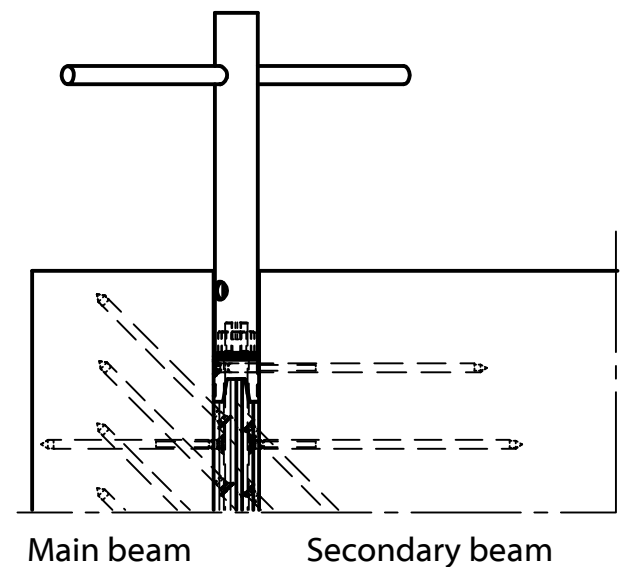
2. Install M16 threaded rod (4) in lower clamping jaw (3) flush



3. Install clamping jaw, washer and M 16 nut

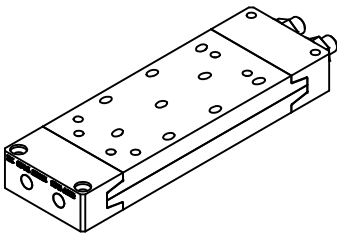


4. Tighten M16 nut with SW 24 wrench (40 Nm) !



This drawing is the exclusive property of Knapp GmbH

Knapp GmbH. All measures in mm - Errors excepted. VERSION 3 14.08.2018

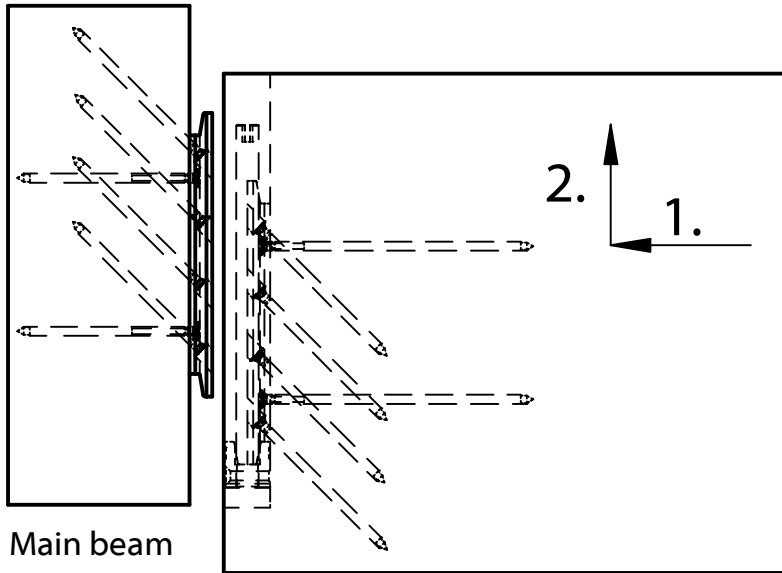


MEGANT® 100x40

Concealed installation

ALU AW 6082

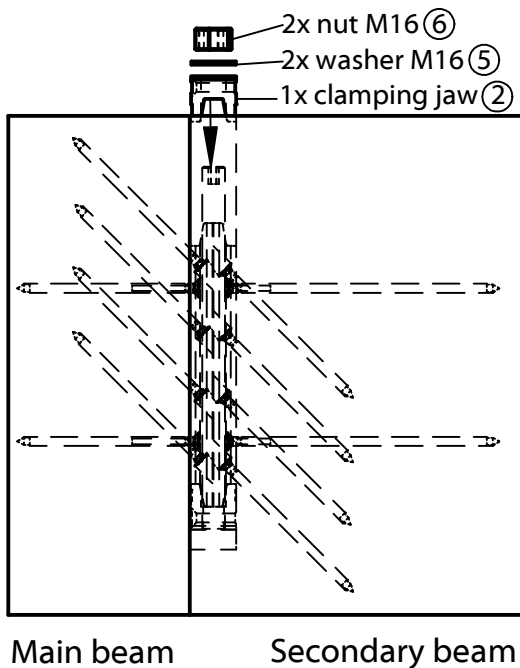
1. Install from below secondary beam



Main beam

Secondary beam

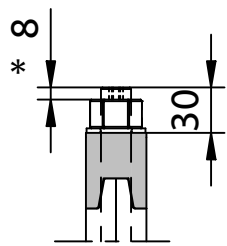
2. Put on and tighten clamping jaw, washer and M16 nut. Tighten M16 nut with SW 24 wrench (40 Nm) !



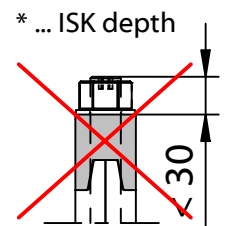
Main beam

Secondary beam

- 2x nut M16 ⑥
- 2x washer M16 ⑤
- 1x clamping jaw ②



✓ OK



* ... ISK depth

