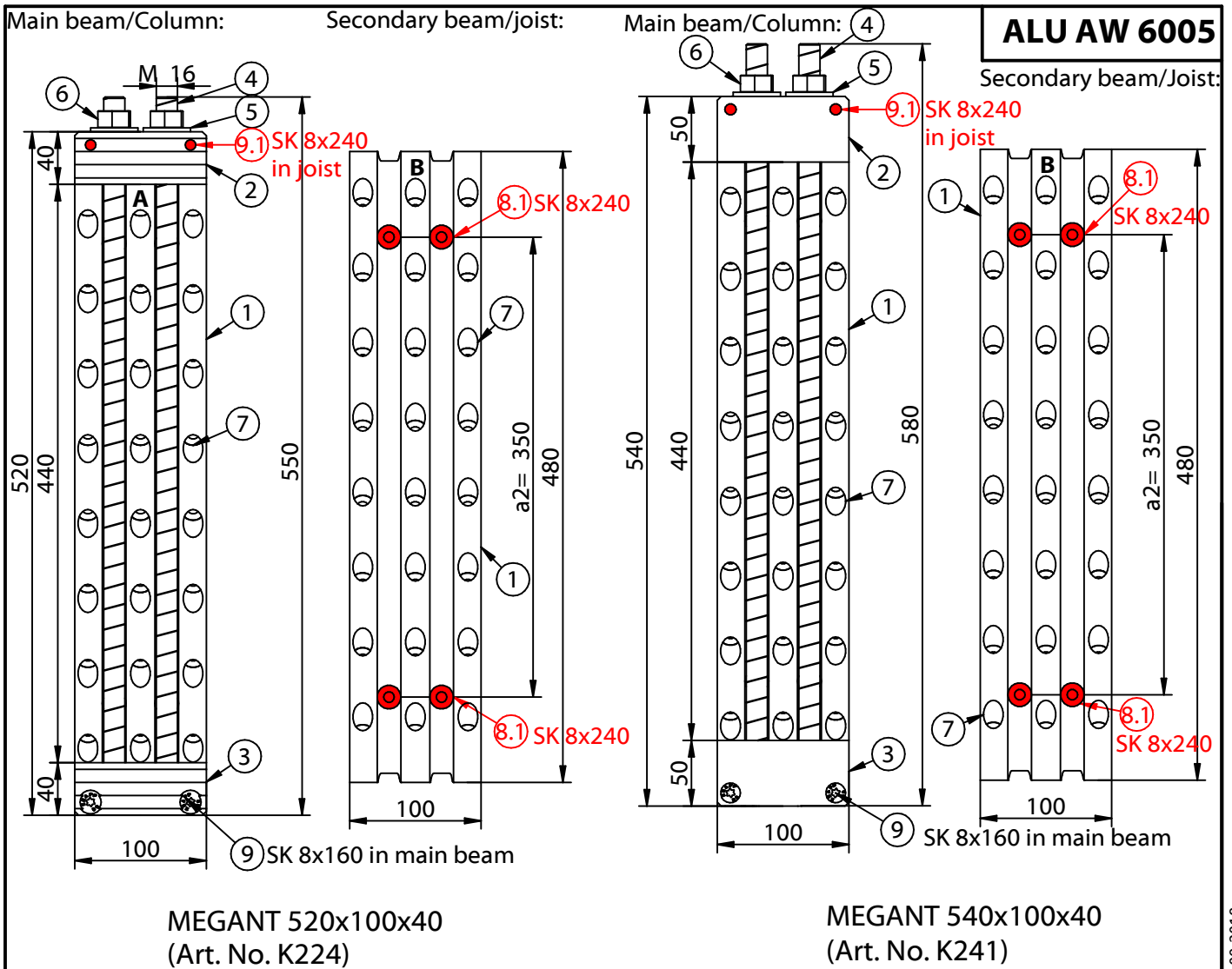


Mounting instructions

MEGANT® 100

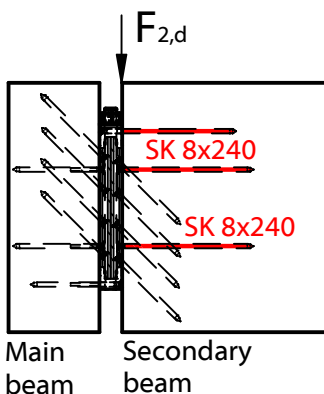
Visible installation

Regular sizes overview



Connector plate specs

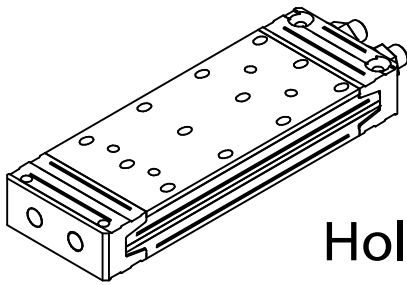
Main beam **A**- top
Secondary beam **B**- top



Pos No.	Art. No.	part description	MEGANT® sizes (ALU AW6005)	
			520x100x40	540x100x40
			Art. No. K224	Art. No. K241
1	-	connector plates	480x100x20 (K199)	480x100x20 (K199)
2	K211	clamping jaws top	40x40x100; D16	50x40x100; D16
3	K212	clamping jaws bottom	40x40x100; M16	50x40x100; M16
4	Z925/Länge	threaded rod	2xM16x550 (Z925 /550)	2xM16x580 (Z925 /580)
5	Z621	washer	2xM16	2xM16
6	Z620	nut	2xM16	2xM16
7	Z581	inclined screws	48x SK8x160	48x SK8x160
8	Z581	horizontal screws	4x SK8x160	4x SK8x160
8.1	Z672	horizontal screws	4x SK8x240	4x SK8x240
9	Z581	screws clamping jaw	2x SK8x160	2x SK8x160
9.1	Z672	screws clamping jaw	2x SK8x240	2x SK8x240

This drawing is the exclusive property of KNAPP GmbH

© Knapp GmbH. All measures in mm - Errors excepted. VERSION 03 03.09.2018



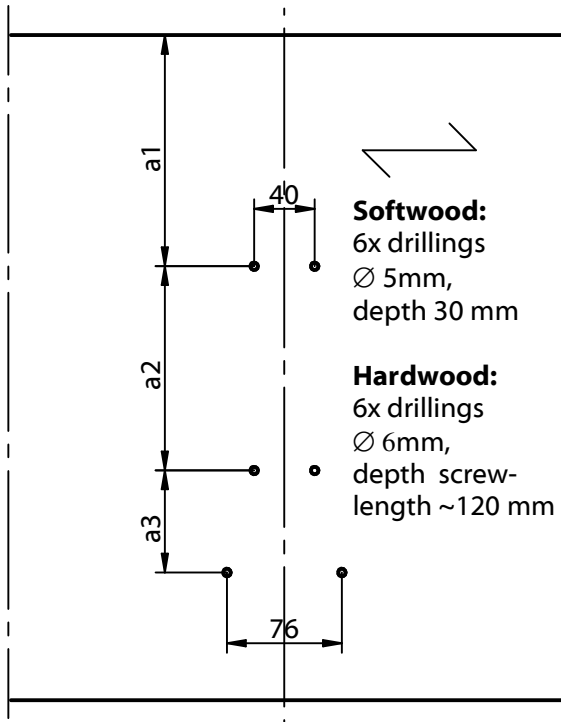
Mounting instructions

MEGANT® 100

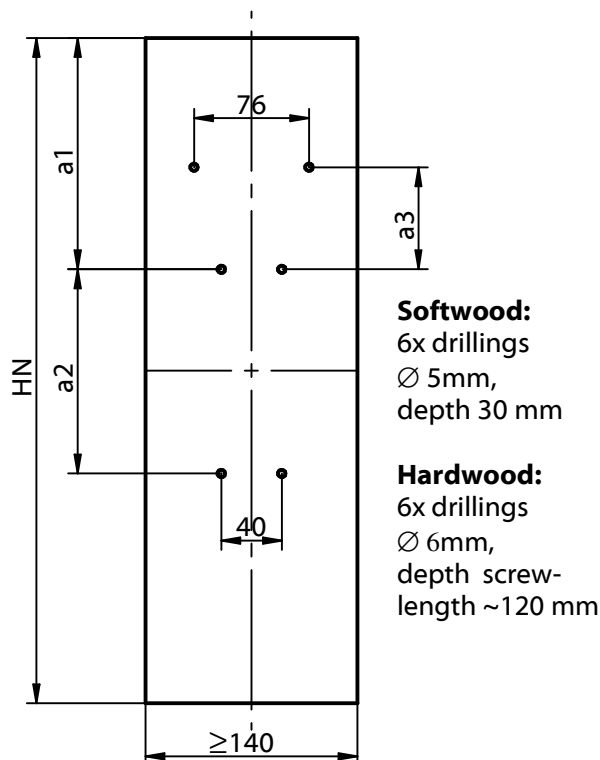
Hole pattern for visible central installation

ALU AW 6005

Pre-drill layout in main beam !

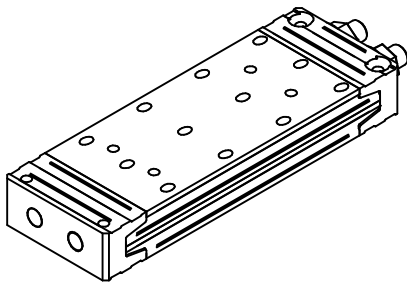


Drilling positions for centered mounting in secondary beam !



Pre-drilling visible installation of connector		
Secondary beam	Pre-drill spacing a1 with respect to secondary beam member height H_N	
	MEGANT®	MEGANT®
Height		
H_N [mm]	520x100	540x100
400		
440		
480		
520		
560		
600		
640	145	145
680	165	165
700	175	175
720	185	185
760	205	205
800	225	225
840	245	245
880	265	265
920	285	285
960	305	305
1000	325	325

Distances	MEGANT®	MEGANT®
	520x100	540x100
a2 [mm]	350	350
a3 [mm]	75	85



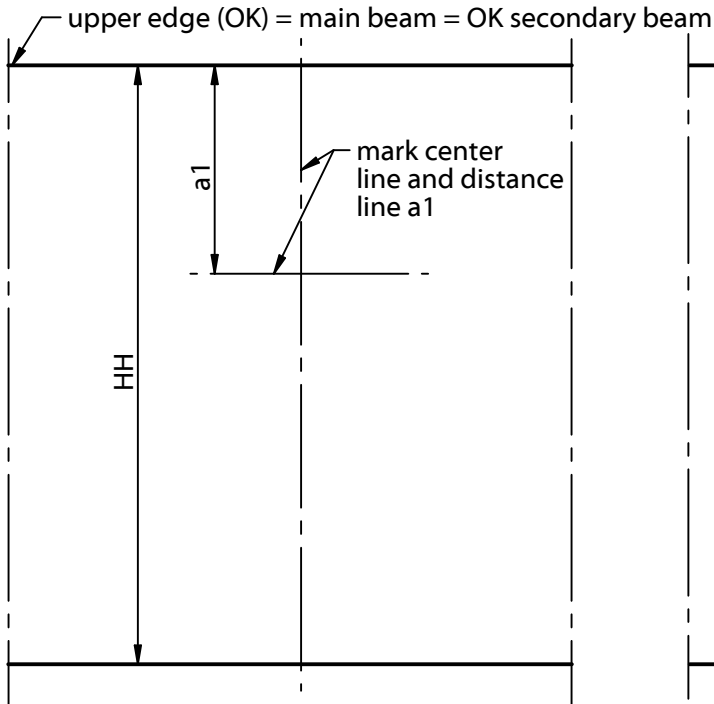
Mounting instructions

MEGANT® 100

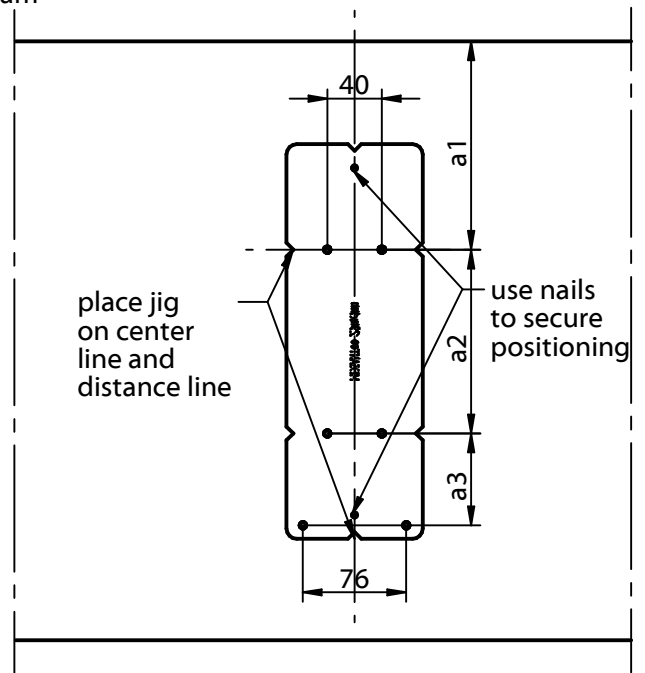
Main beam pre-drilling with jig

ALU AW 6005

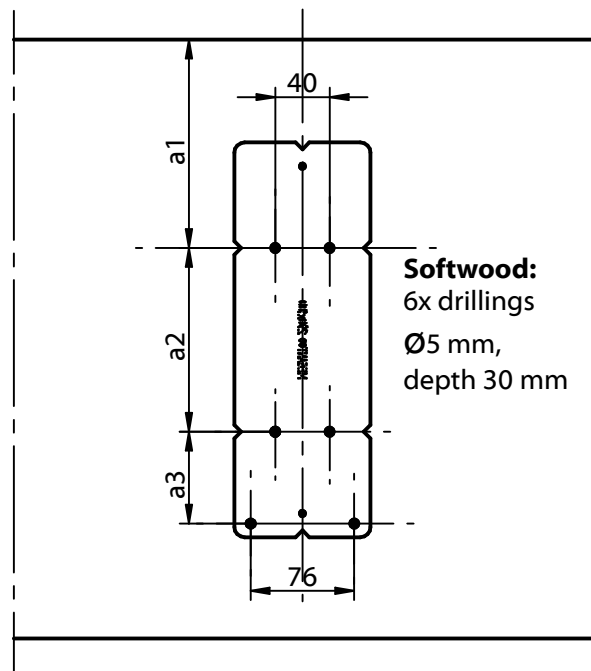
1.) Marking

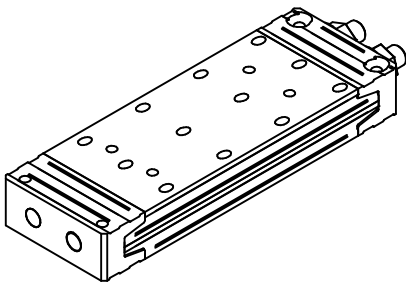


2.) Place jig



3.) Pre-drill



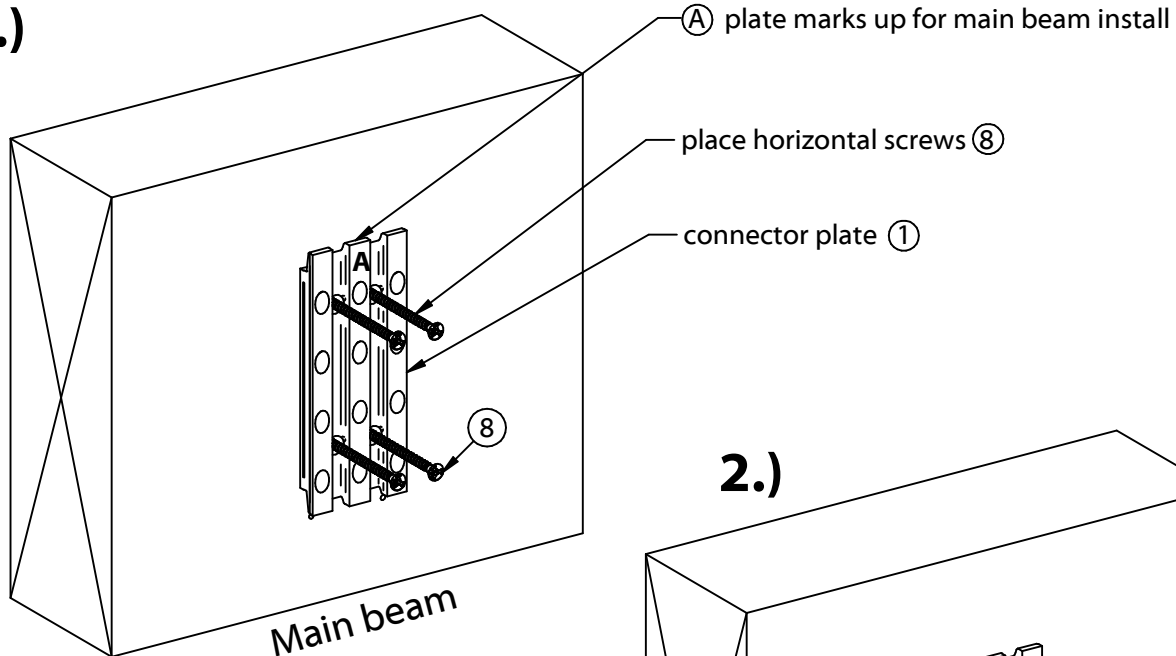


Mounting instructions MEGANT® 100

Install MEGANT **visibly** on main beam

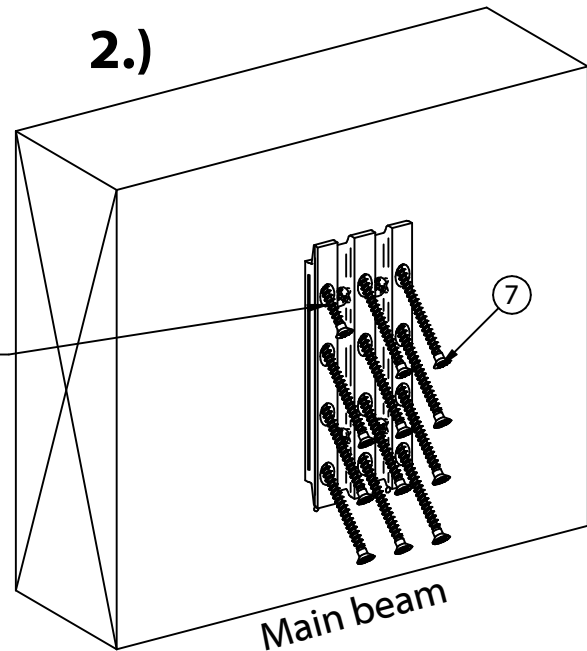
ALU AW 6005

1.)

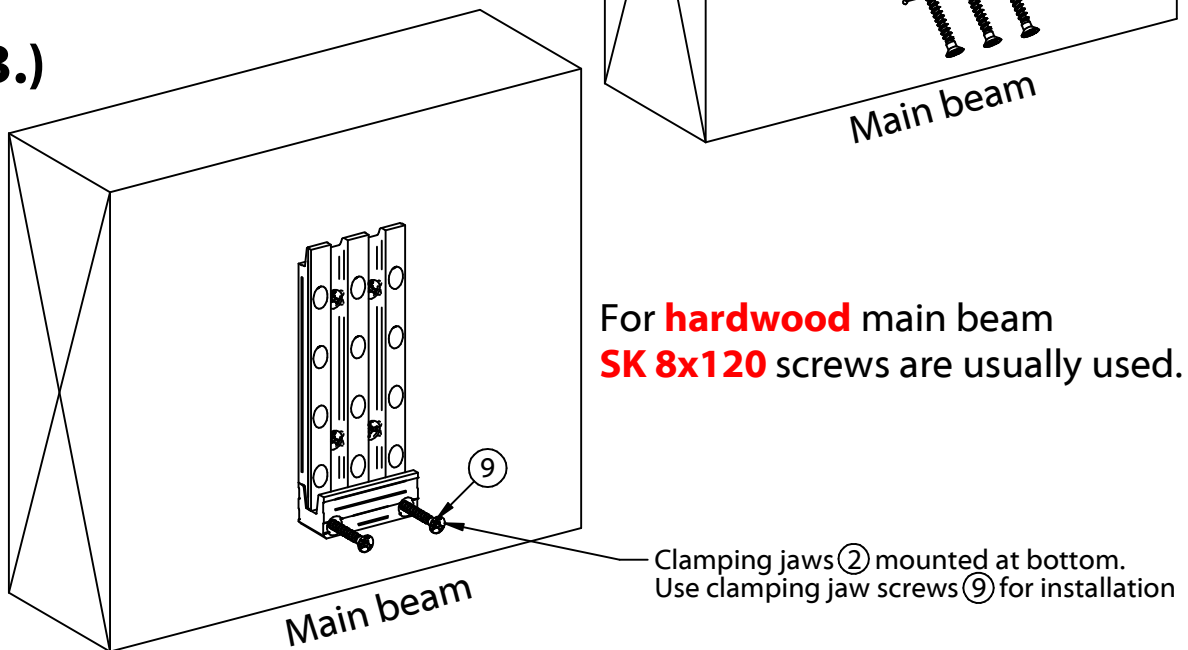


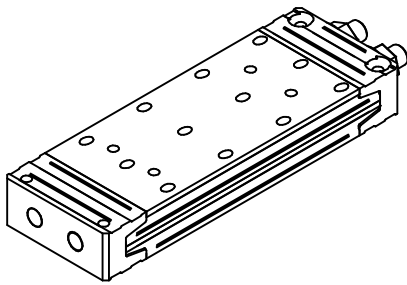
2.)

Inclined screws ⑦ in connector plate ②
Start screwing from top down.
Use max. 20Nm torque setting.
Mount connector plate firmly



3.)





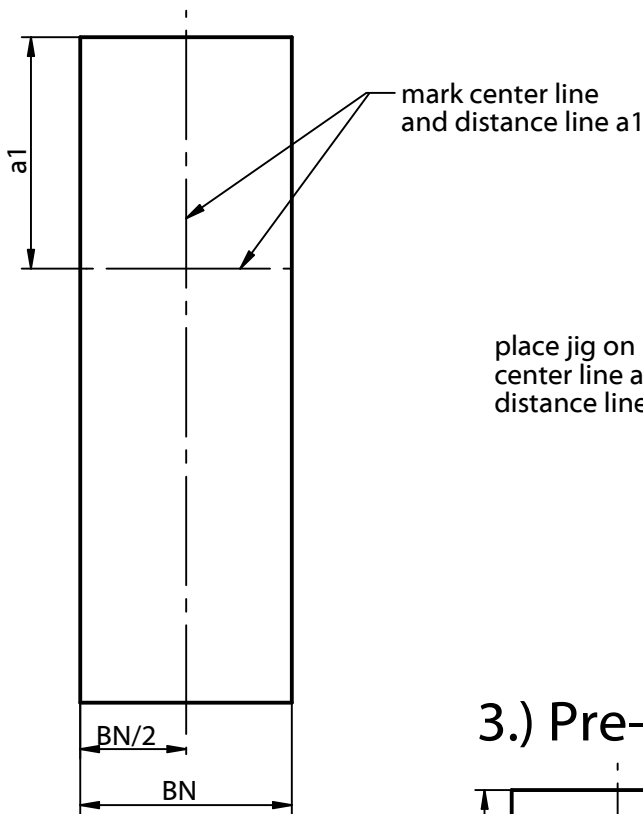
Mounting instructions

MEGANT® 100

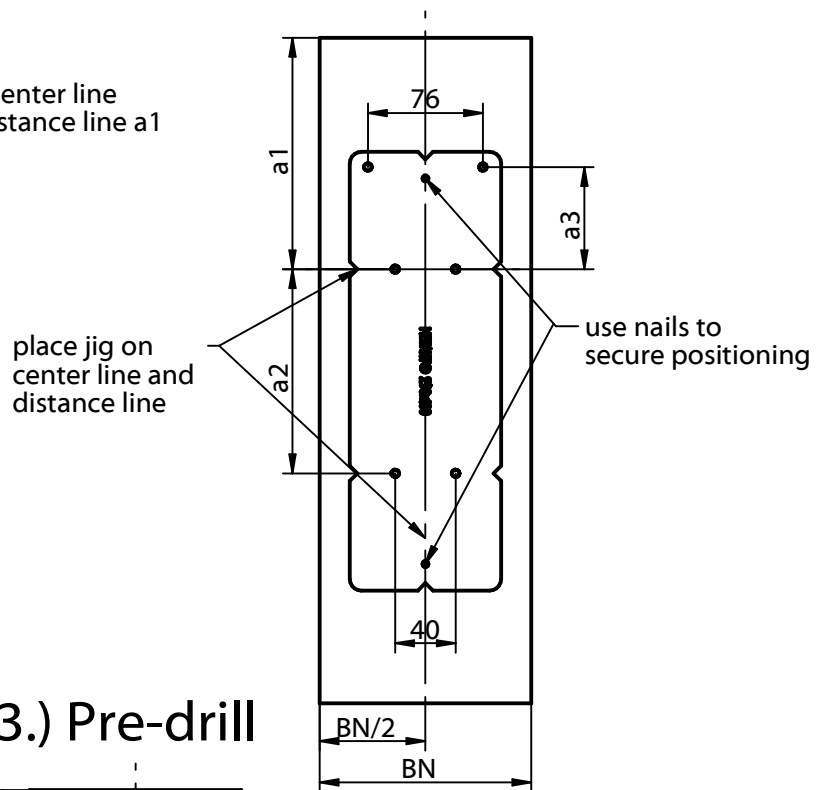
Secondary beam pre-drilling with jig

ALU AW 6005

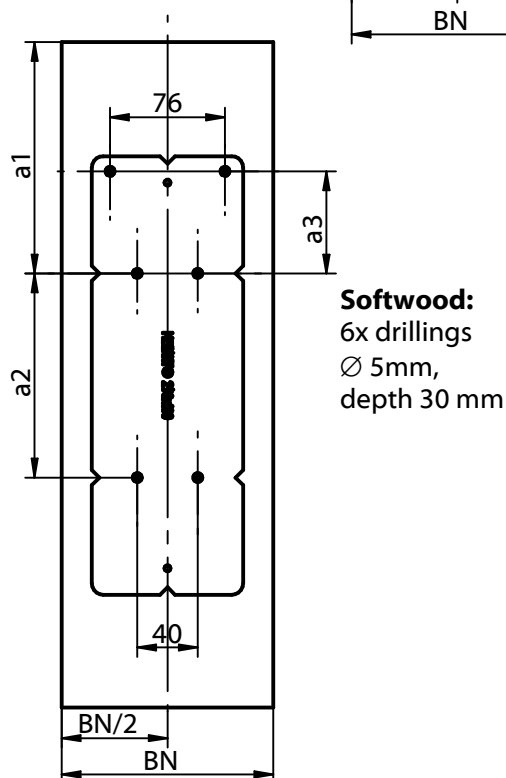
1.) Marking

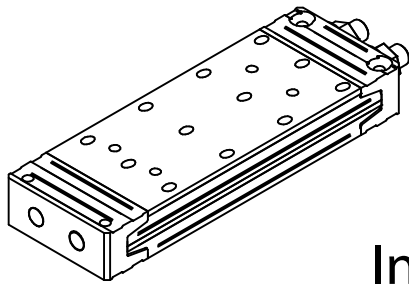


2.) Place jig



3.) Pre-drill



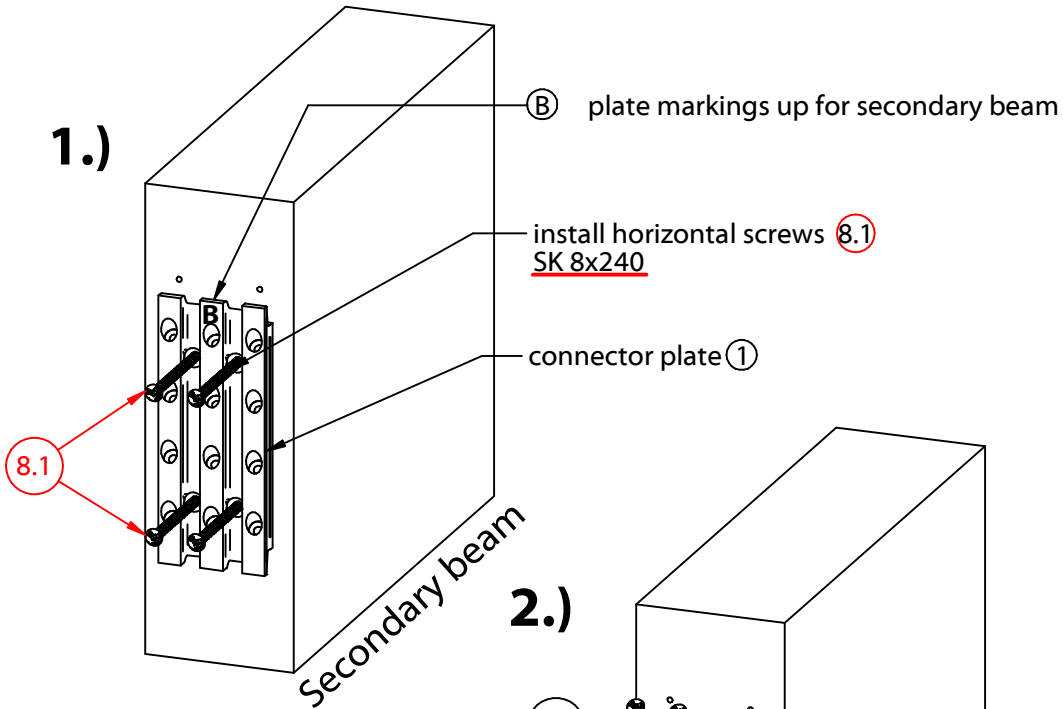


Mounting instructions MEGANT® 100

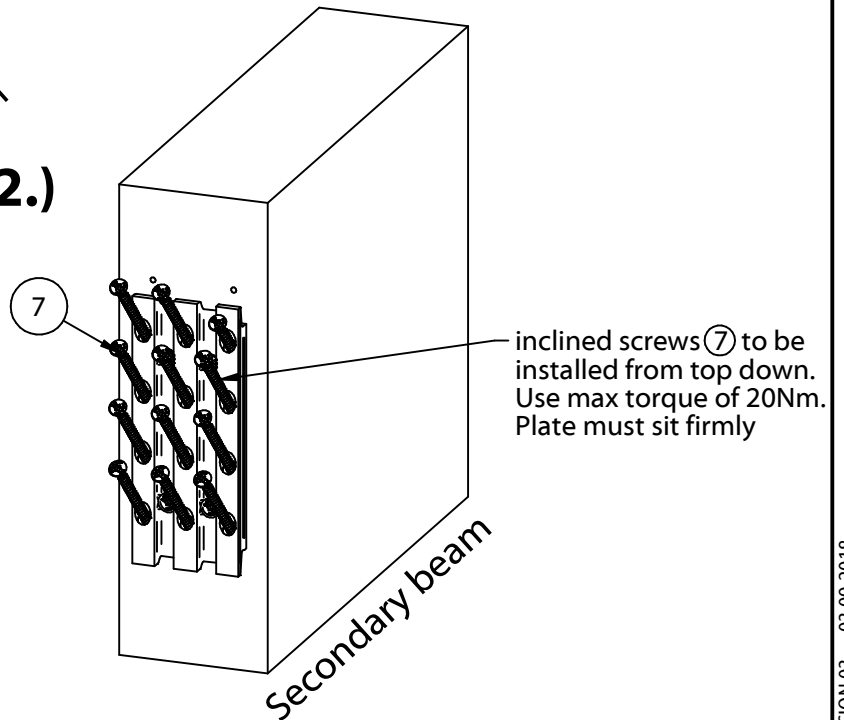
Install MEGANT visibly on secondary beam

ALU AW 6005

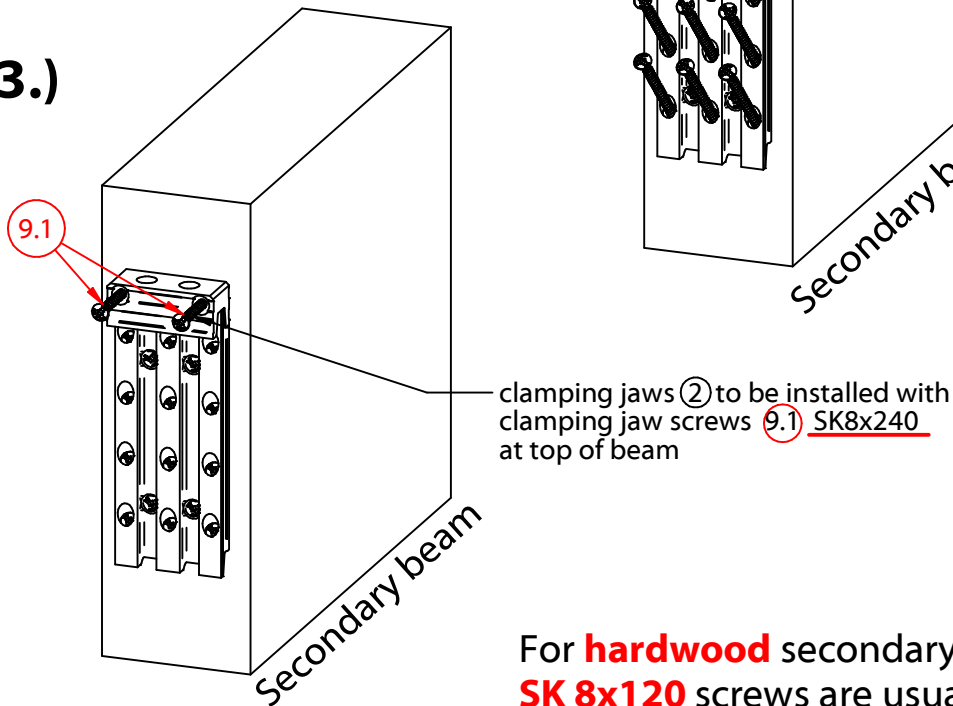
1.)



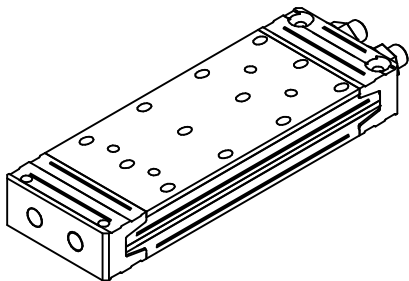
2.)



3.)



For **hardwood** secondary beam
SK 8x120 screws are usually used.



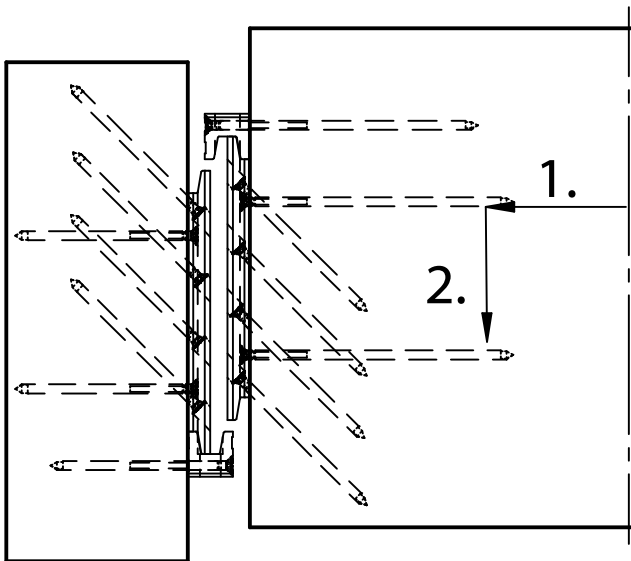
Mounting instructions

MEGANT® 100

Visible installation

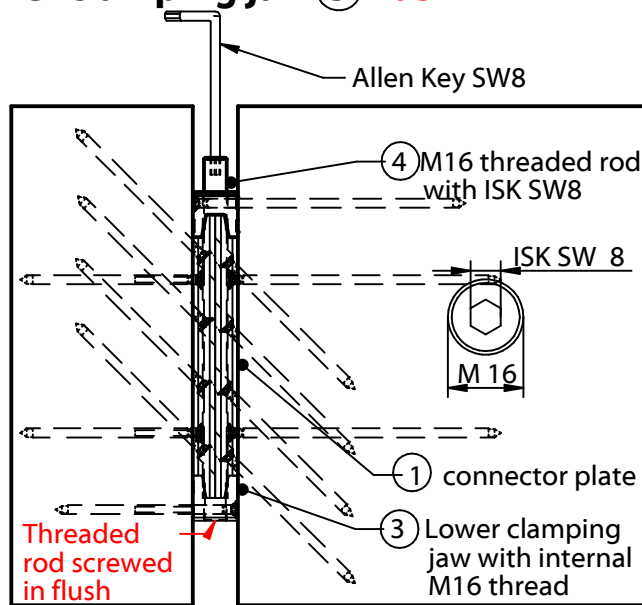
ALU AW 6005

1. Install secondary beam



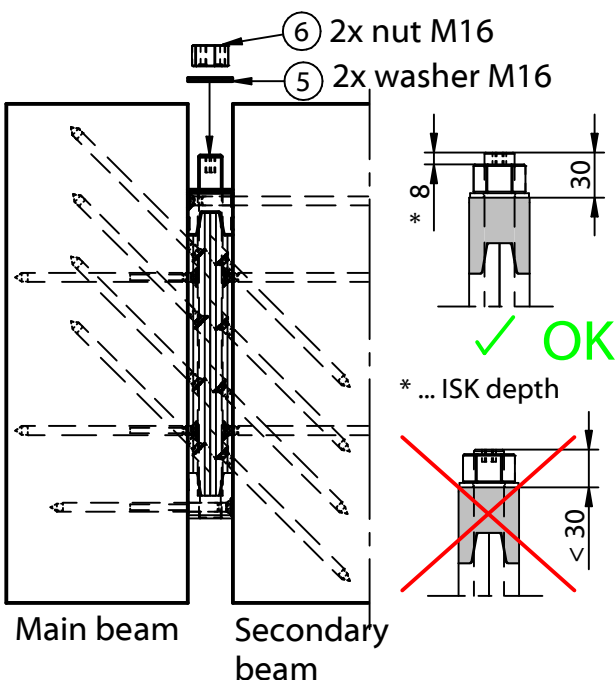
Main beam Secondary beam

2. Install M16 threaded rod ④ in lower clamping jaw ③ flush



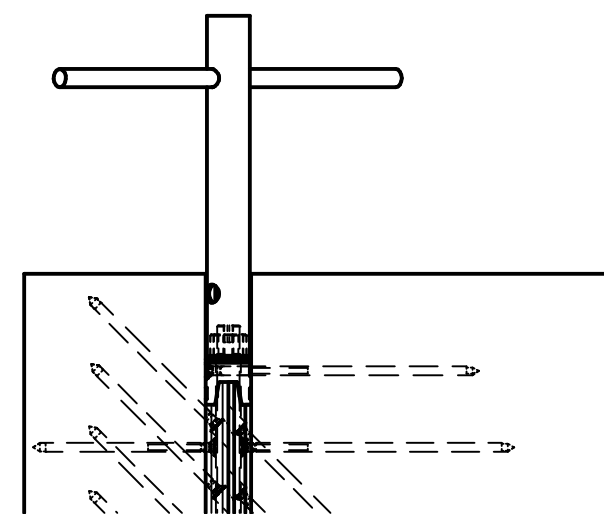
Main beam Secondary beam

3. Install clamping jaw, washer and M16 nut



Main beam Secondary beam

4. Tighten M16 nut with SW 24 wrench (40 Nm) !



Main beam Secondary beam

This drawing is the exclusive property of KNAPP GmbH

© Knapp GmbH. All measures in mm - Errors excepted. VERSION 03 03.09.2018