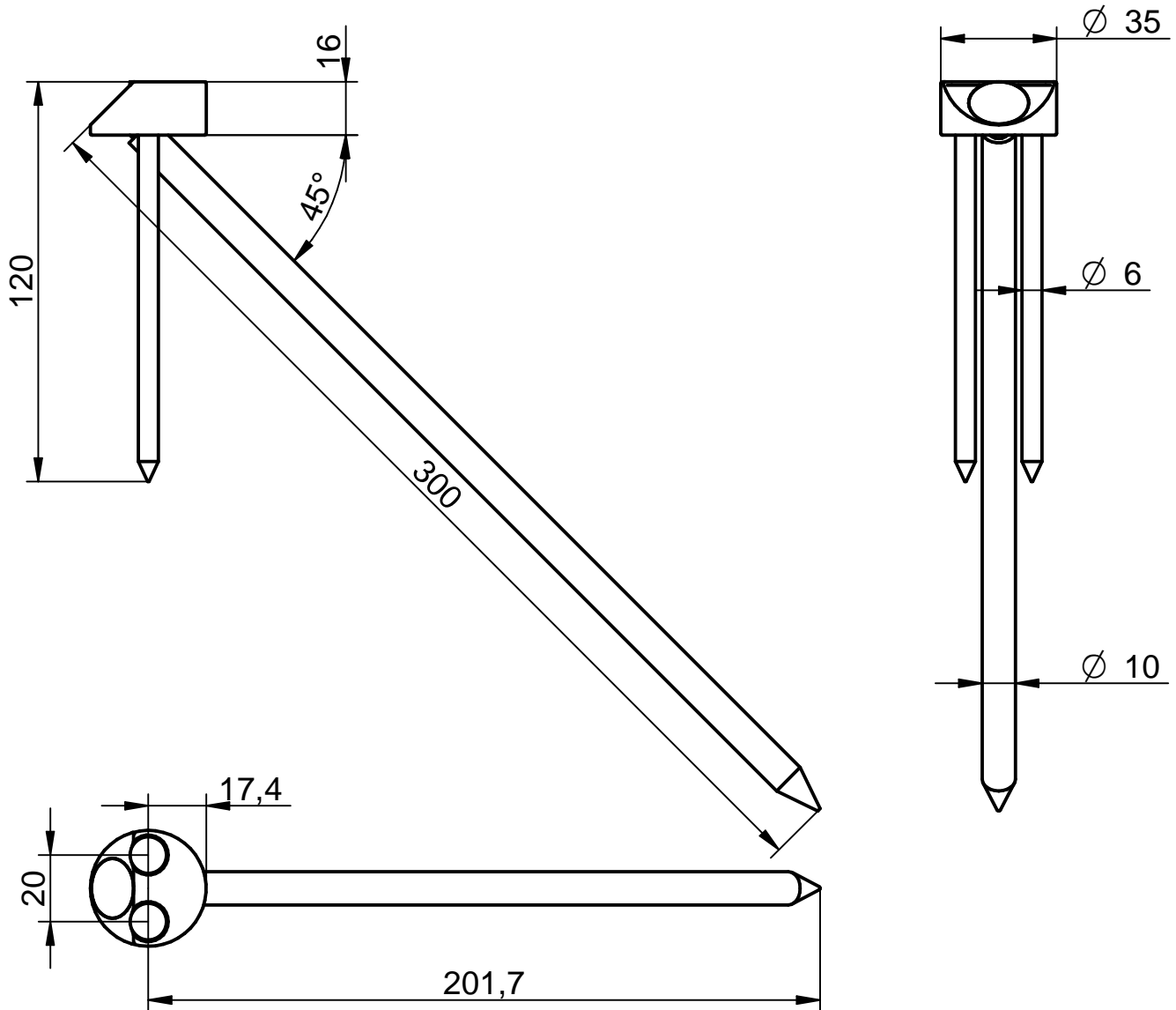


## KNAPP® -T-JOINT D35 W45

Art.- Nr. Z403

**Schrauben Empfehlung:**

1 St. SK-Schraube 10x300 mm (Art-Nr. Z651)

2 St. SK-Schrauben 6x120 mm (Art-Nr. Z495)

Can be screwed with:

1 pc. CS-screw 10x300mm (Art-No. Z651)

2 pcs. CS-screws 6x120 mm (Art-No. Z495)

**Material: Edelstahl**

material: stainless steel

**M 1 : 2**