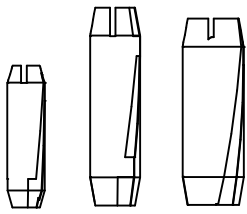
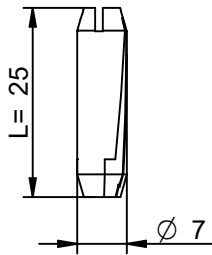


Art.-Nr.

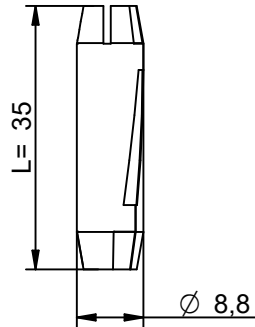


Art.-Nr. Z5052, Z5053, Z5055

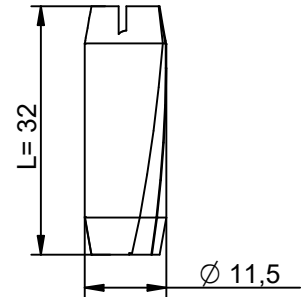
6 mm
Art. Nr. Z5052



8 mm
Art. Nr. Z5053

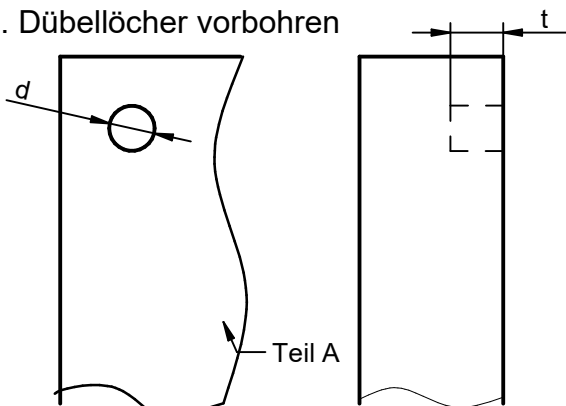


10 mm
Art. Nr. Z5055

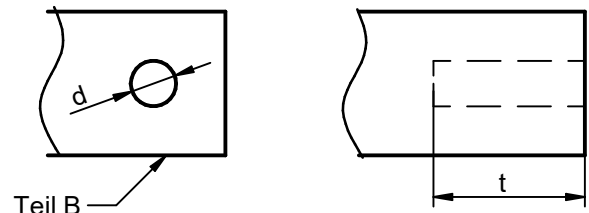


Verarbeitung

1. Dübellöcher vorbohren

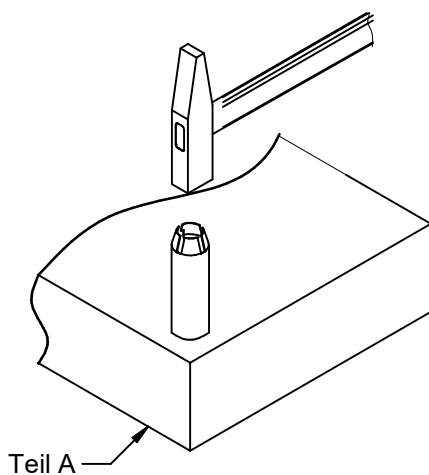


d	t	L
Ø6 mm	7 mm	25 mm
Ø8 mm	13 mm	35 mm
Ø10,5 mm	13 mm	32 mm

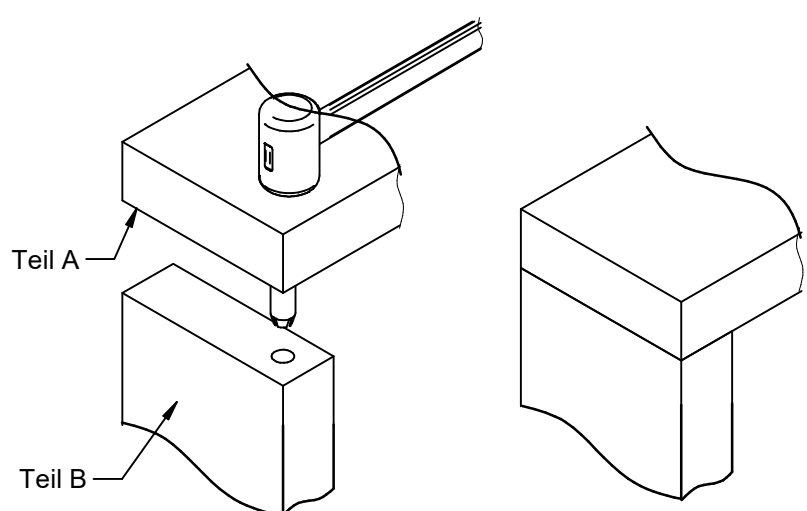


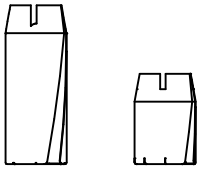
d	t	L
Ø6 mm	20 mm	25 mm
Ø8 mm	23 mm	35 mm
Ø10,5 mm	20 mm	32 mm

2. Einsetzen des Federstahldübels



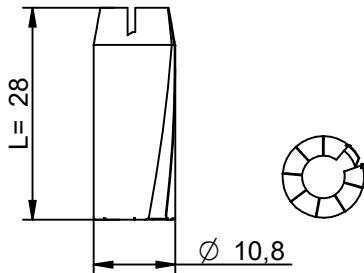
3. Zusammensetzen der Teile



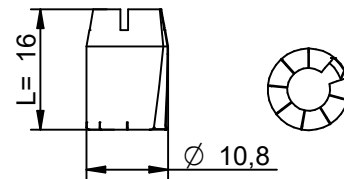


Art.-Nr. Z5055A, Z5055B

10 mm einseitig anschraubbar
Art. Nr. Z5055A

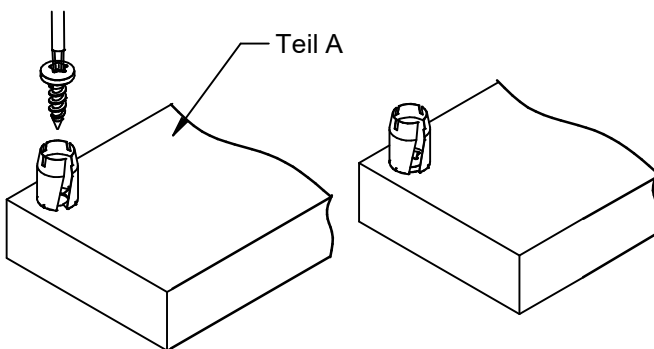


10 mm einseitig anschraubbar
Art. Nr. Z5055B

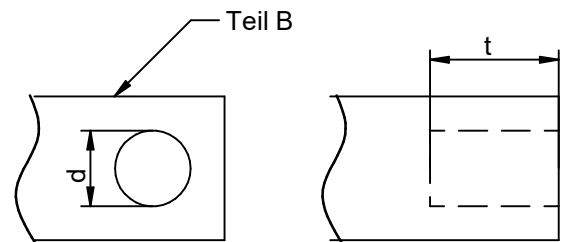


Verarbeitung

1. Dübel aufschrauben

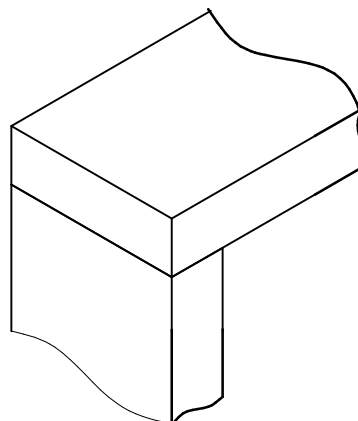
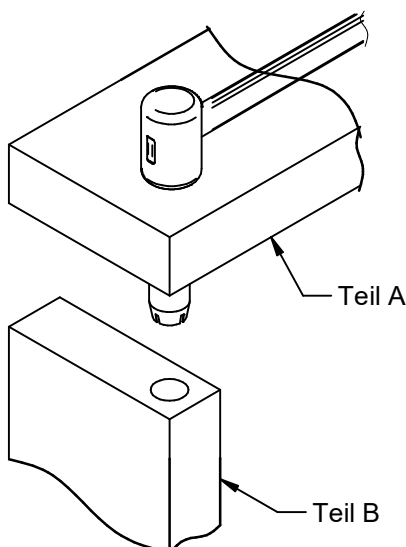


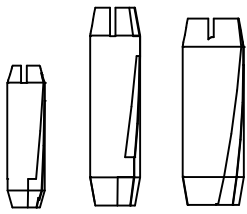
2. Dübellöcher vorbohren



d	t	L
Ø10 mm	18 mm	16 mm
Ø10 mm	30 mm	28 mm

3. Zusammensetzen der Teile





TUCK

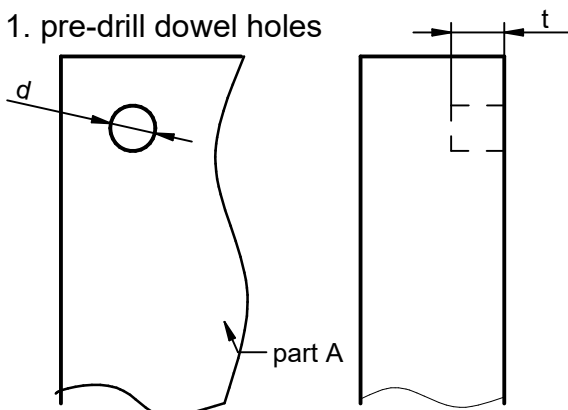
Dowel connector

Art.-No. Z5052, Z5053, Z5055

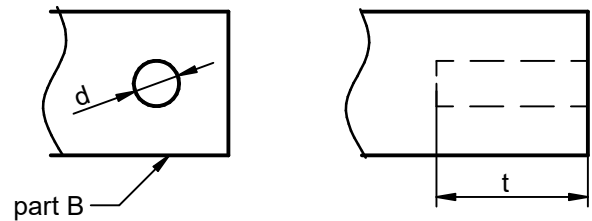
<p>6 mm Art. No. Z5052</p>	<p>8 mm Art. No. Z5053</p>	<p>10 mm Art. No. Z5055</p>
---------------------------------------	---------------------------------------	----------------------------------------

Processing

1. pre-drill dowel holes

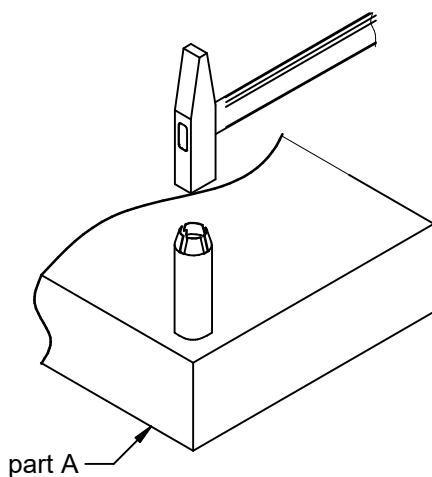


d	t	L
Ø6 mm	7 mm	25 mm
Ø8 mm	13 mm	35 mm
Ø10,5 mm	13 mm	32 mm

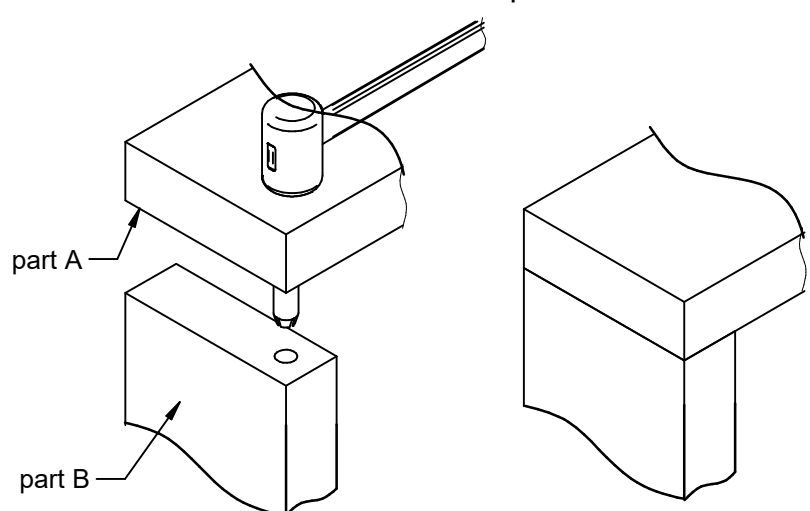


d	t	L
Ø6 mm	20 mm	25 mm
Ø8 mm	23 mm	35 mm
Ø10,5 mm	20 mm	32 mm

2. inserting the spring steel dowel

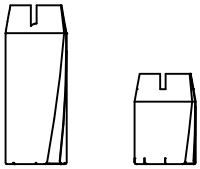


3. assemble the parts



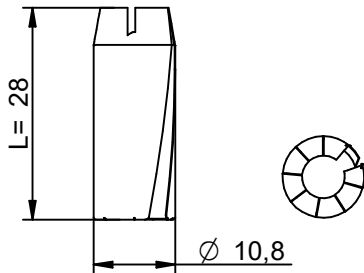
This drawing is the exclusive property of Knapp GmbH.

© Knapp GmbH. All measures in mm - Errors excepted. VERSION 09.11.2021

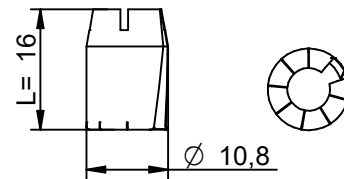


Art.-No. Z5055A, Z5055B

10 mm dowel to be screwed on at one end Art. No. Z5055A

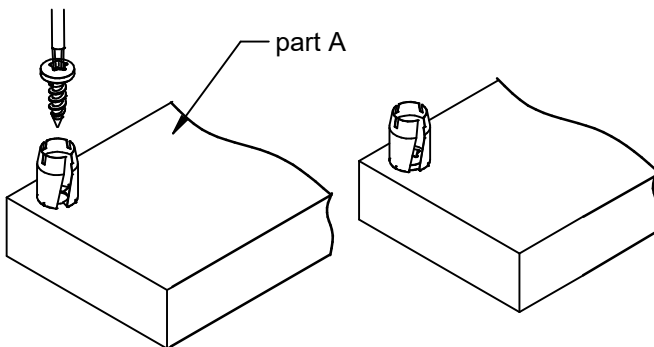


10 mm dowel to be screwed on at one end Art. No. Z5055B

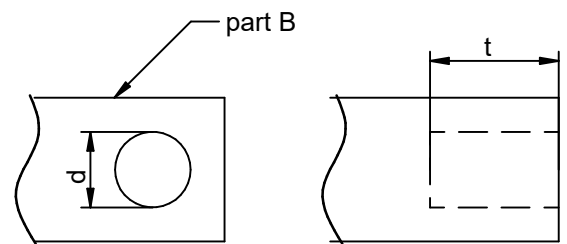


Processing

1. screw dowel to one side

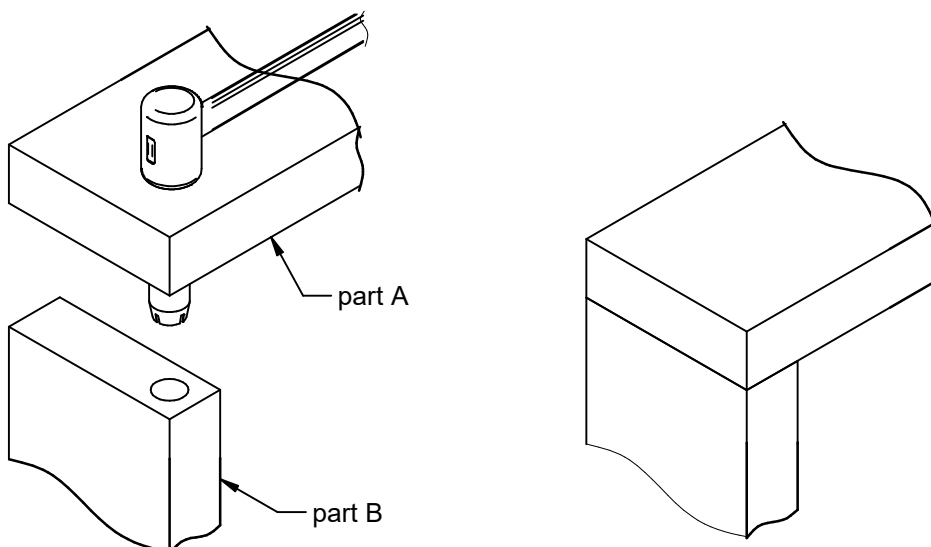


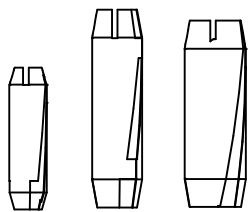
2. pre-drill dowel holes



d	t	L
Ø10 mm	18 mm	16 mm
Ø10 mm	30 mm	28 mm

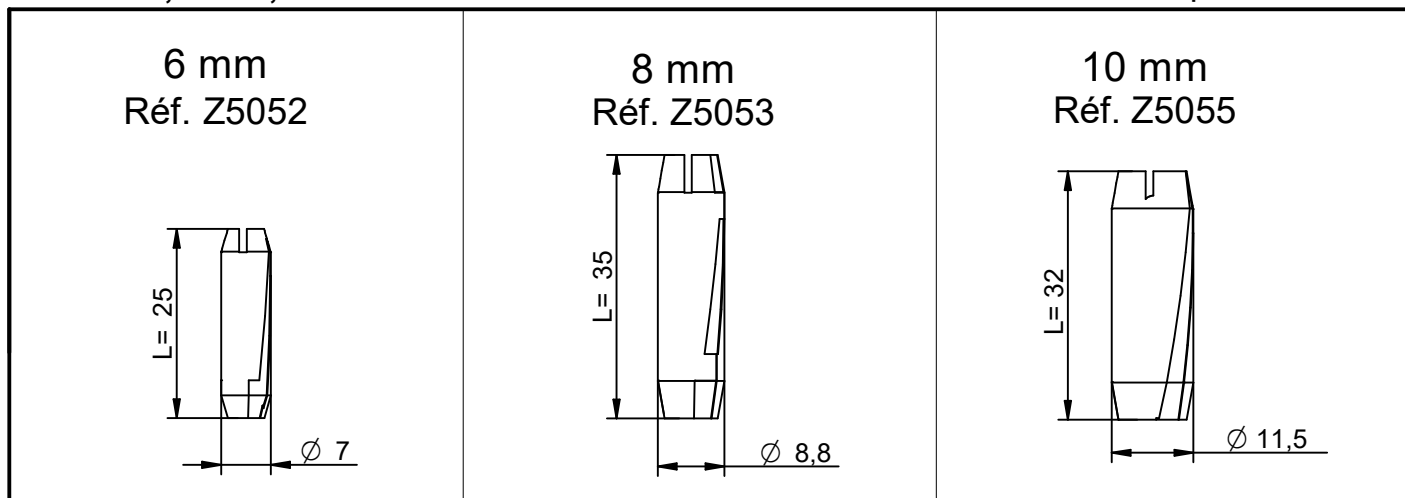
3. assemble the parts





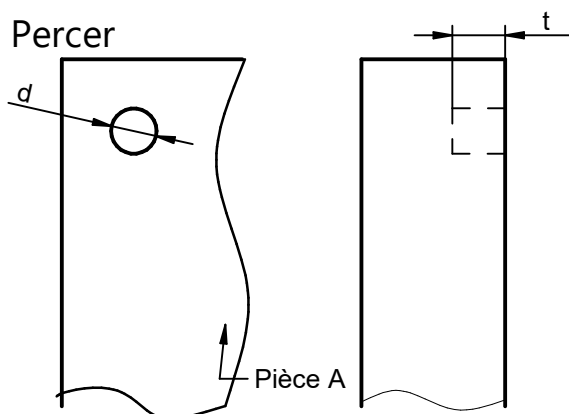
Réf. Z5052, Z5053, Z5055

Tourillons métalliques à ressort

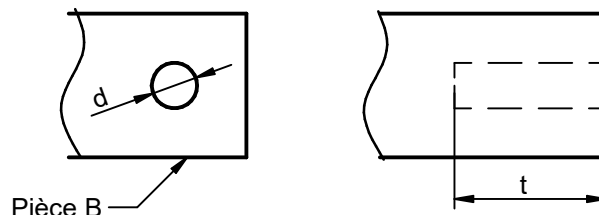


Mise en oeuvre

1. Percer

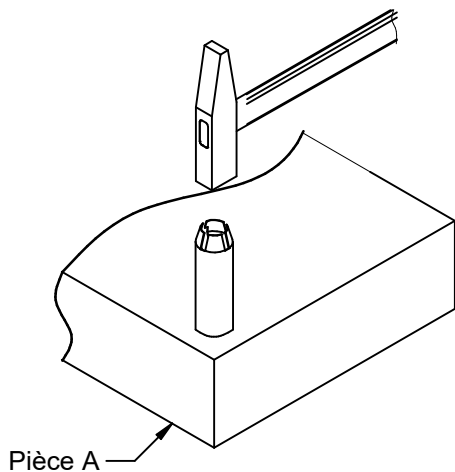


d	t	L
Ø6 mm	7 mm	25 mm
Ø8 mm	13 mm	35 mm
Ø10,5 mm	13 mm	32 mm

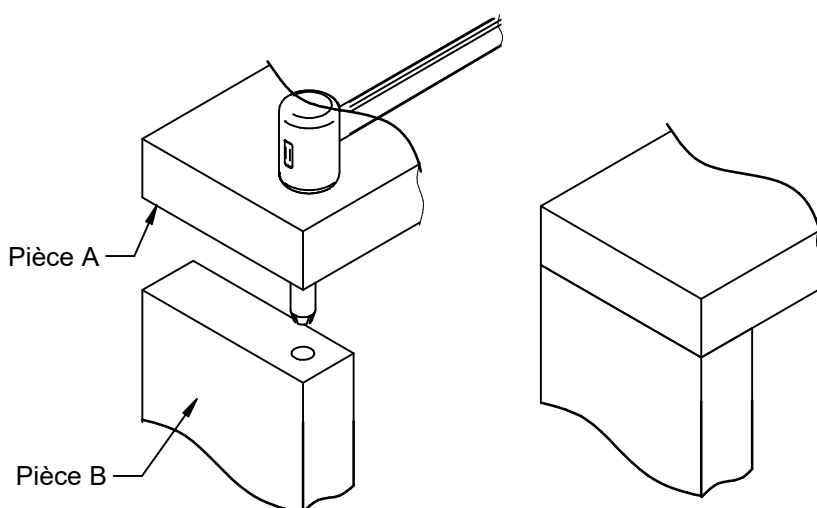


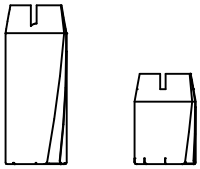
d	t	L
Ø6 mm	20 mm	25 mm
Ø8 mm	23 mm	35 mm
Ø10,5 mm	20 mm	32 mm

2. Insérer les tourillons à ressort



3. Monter les éléments

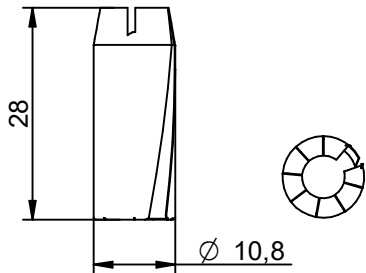




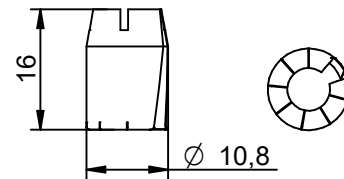
Réf. Z5055A, Z5055B

Tourillons métalliques à ressort

10 mm à visser sur un côté
Réf. Z5055A

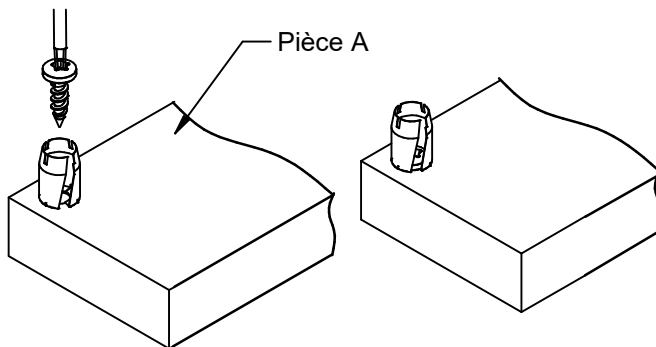


10 mm à visser sur un côté
Réf. Z5055B

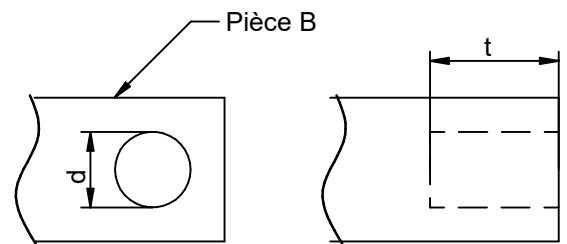


Mise en oeuvre

1. Visser le tourillon

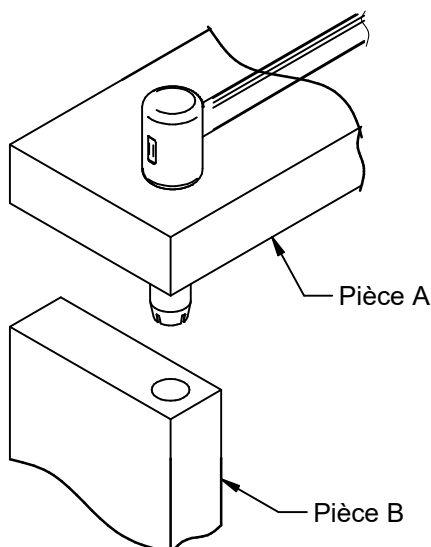


2. Percer



d	t	L
Ø10 mm	18 mm	16 mm
Ø10 mm	30 mm	28 mm

3. Monter les éléments



KNAPP®
connectors.com

Knapp GmbH ■ Wassergasse 31 ■ A-3324 Euratsfeld ■ Tel.: +43 (0)7474 / 799 10 ■ Fax: +43 (0)7474 / 799 10 99
Knapp GmbH ■ Vertrieb Deutschland ■ Föhrenweg 1 ■ D-85591 Vaterstetten ■ Tel.: +49 (0)8106 / 99 55 99 0 ■ Fax: +49 (0)8106 / 99 55 99 20 ■ E-Mail: info@knapp-verbinder.com
Knapp GmbH Sàrl ■ Filiale France ■ 1A Rue du Stade ■ F - 67880 Innenheim Tel. : +33 (0)3 88 48 17 87 ■ Fax: +33 (0)9 70 62 81 87 ■ E-Mail : france@knapp-connectors.com