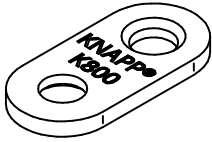




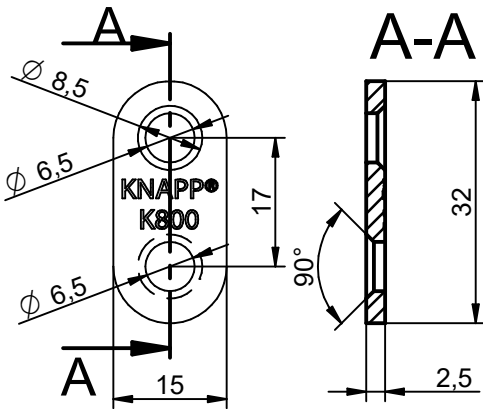
Art.-Nr.



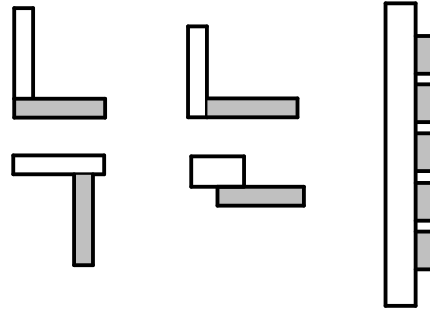
# Montageanleitung CONTRA

Universeller Holzverbinder

Art.-Nr. K800/B



Verbindungen - Schema



HM-Nutfräser  
Ø=15, L=25mm  
Art.-Nr. Z066



Schrauben Empfehlung:

1 St. EURO- Schraube SK 6,3x10 mm( Art.-Nr. Z 510 )  
und

1 St. EURO- Schraube SK 6,3x 30 mm( Art.-Nr. Z 518 )  
oder

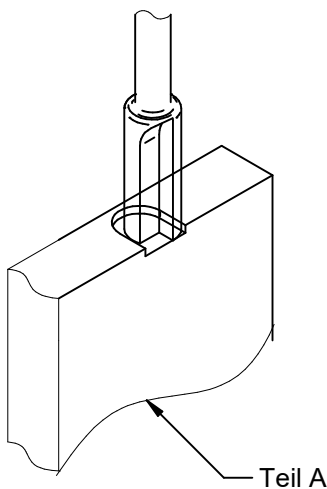
1 St. SK- Schraube 4,0x 16 mm( Art.-Nr. Z 422 ) und

1 St. SK- Schraube 4,0x 40 mm( Art.-Nr. Z 423 )

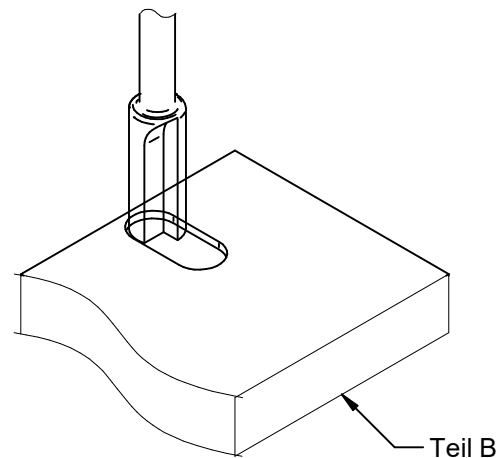


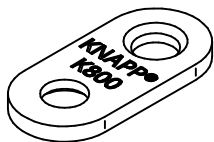
## 1. Fräsen

In Kante eingefräst



In Fläche eingefräst



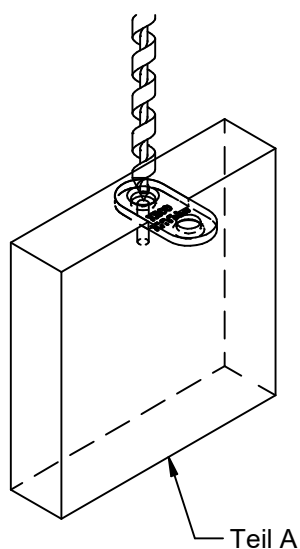


# Montageanleitung CONTRA

Universeller Holzverbinder

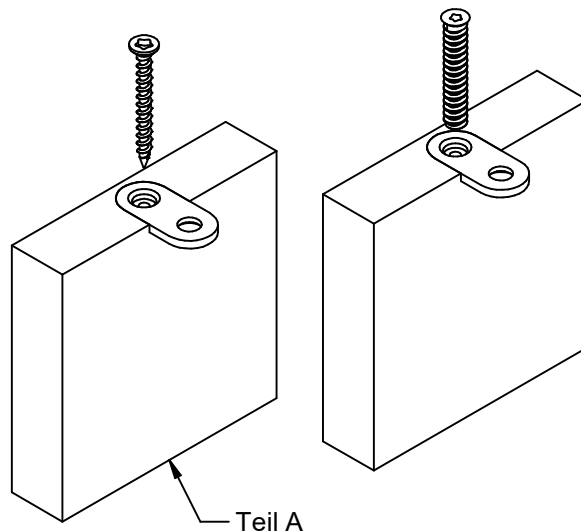
Art.-Nr. K800/B

## 2. Vorbohren

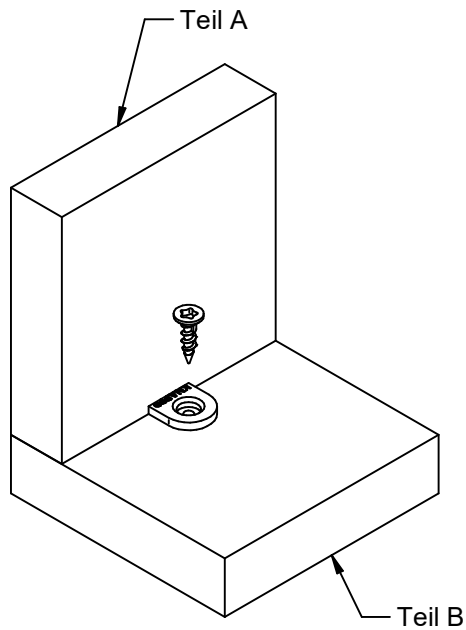
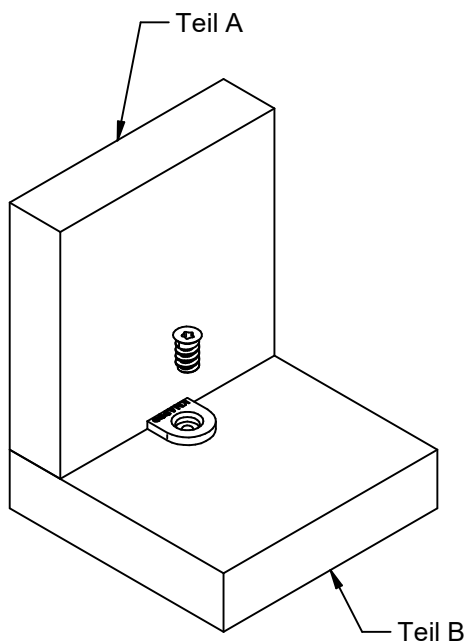


## 3. Verschrauben

( mit EURO- Schraube oder Holz- Schraube )

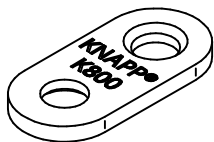


## 4. Montieren



Diese Zeichnung ist Eigentum der Knapp GmbH.

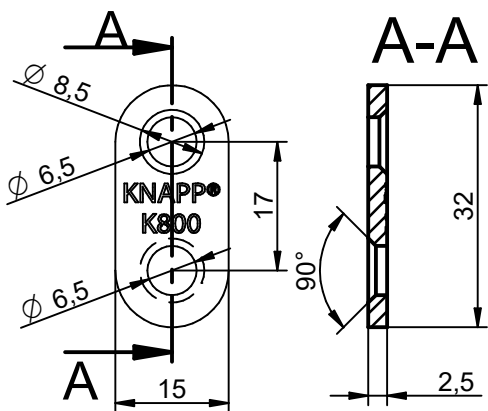
© Knapp GmbH. Alle Maße in mm - Irrtümer, Druckfehler und Änderungen vorbehalten. VERSION 05.10.2021



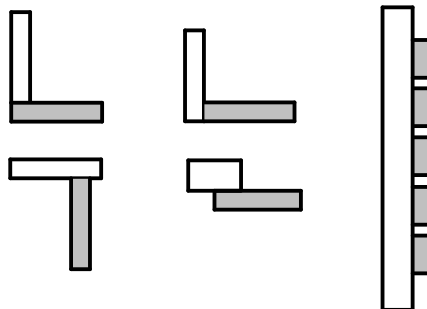
# CONTRA

Universal wood connector

Art.-No. K800/B



Connections - scheme



HM-router bit  
 $\varnothing=15$ , L=25mm  
 Art.-No.Z066



**Screws recommendation:**

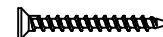
1 EURO screw CS 6,3x10 mm( Art.-No. Z510 ) and

1 EURO screw CS 6,3x 30 mm( Art.-No. Z518 )

or

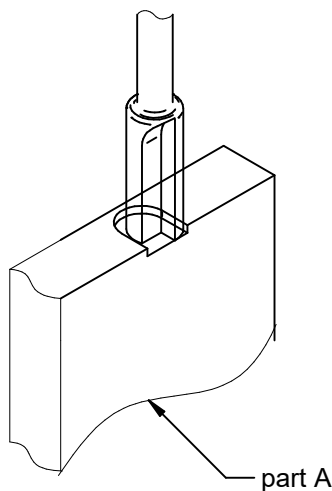
1 CS screw 4,0x 16 mm( Art.-No. Z422 ) and

1 CS screw 4,0x 40 mm( Art.-No. Z423 )

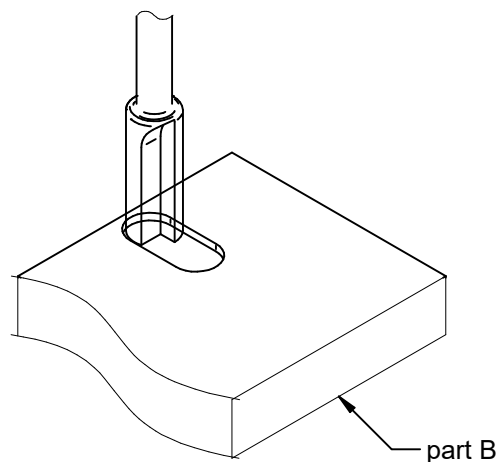


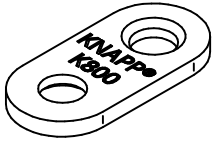
## 1. Milling

Milled into edge



Milled into surface



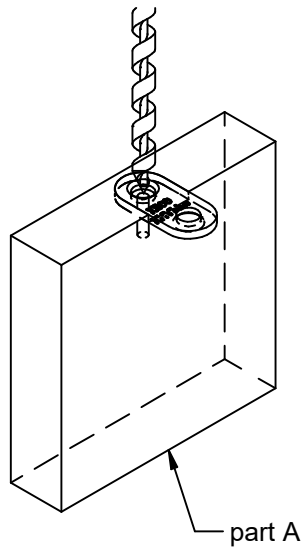


# CONTRA

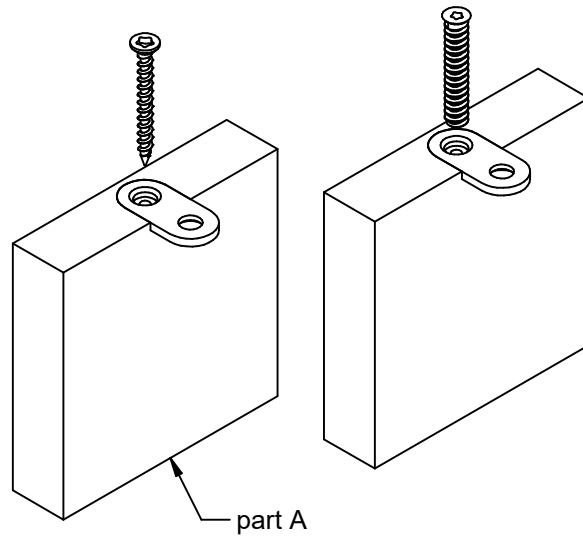
Universal wood connector

Art.-No. K800/B

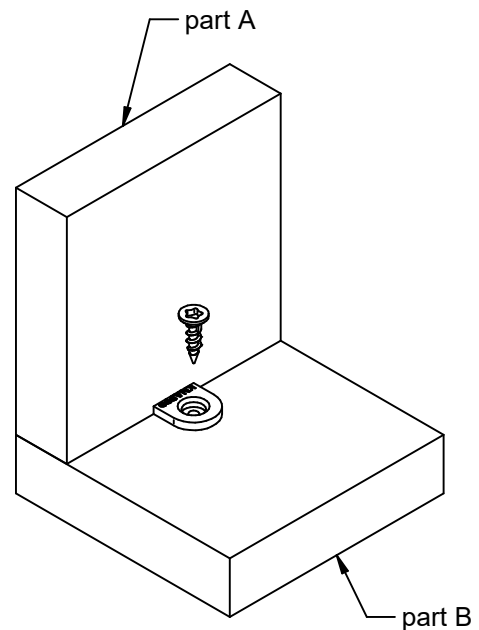
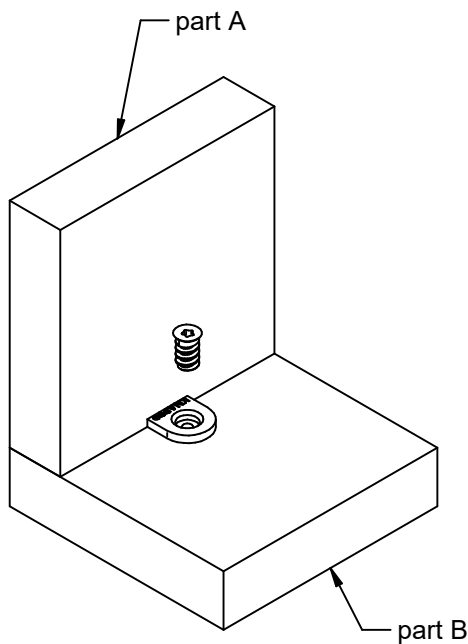
## 2. pre-drill



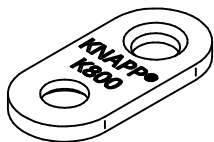
## 3. fasten with screws (with EURO-screw or wood-screw)



## 4. assemble

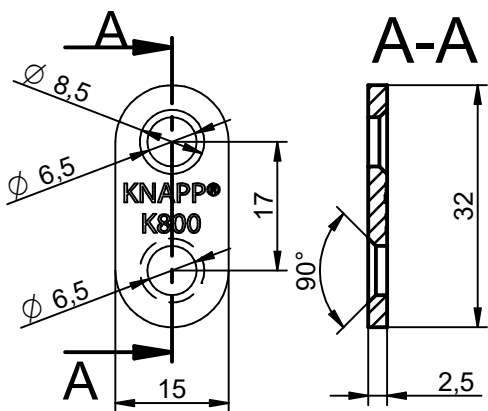


# CONTRA

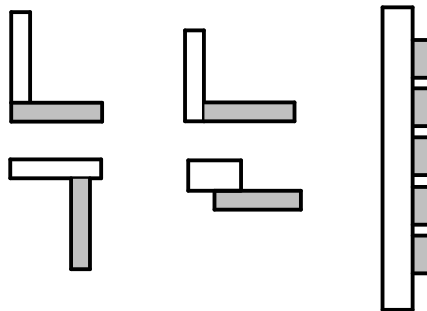


Réf. K800/B

Assembleur universel



Possibilités d'assemblage

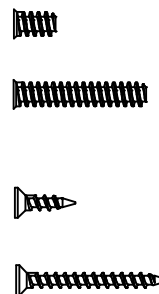


Fraise à rainer HM  
Ø=15, L=25mm  
Réf. Z066



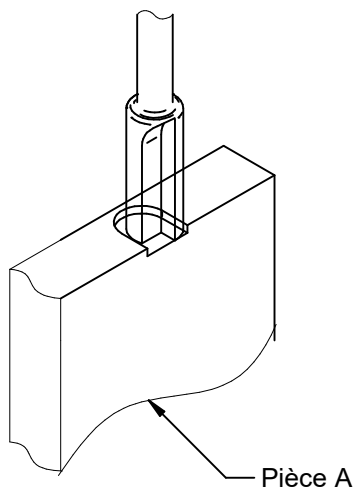
Vis recommandés :

- 1 vis EURO TF 6,3x10 mm (Réf. Z510) et
- 1 vis EURO TF 6,3x 30 mm (Réf. Z518)
- ou
- 1 vis TF 4,0x 16 mm (Réf. Z422) et
- 1 vis TF 4,0x 40 mm (Réf. Z423)

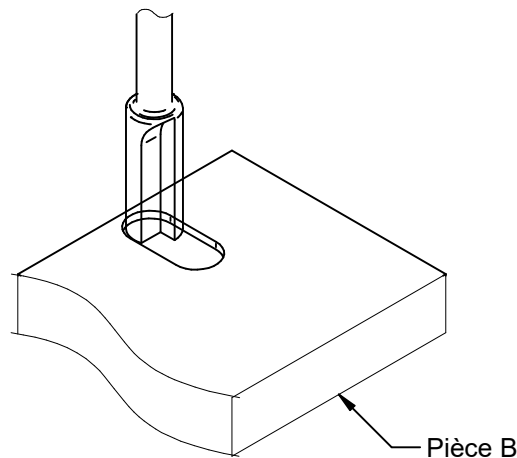


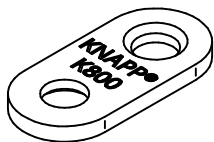
## 1. Fraiser

Usinage sur chant



Usinage sur la face



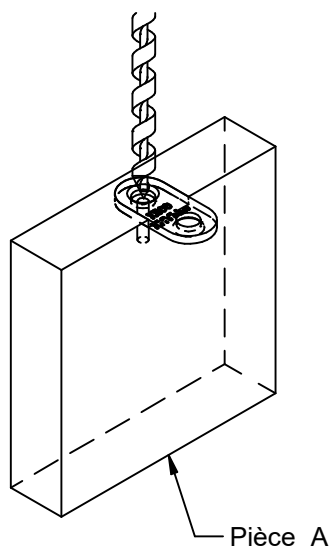


# CONTRA

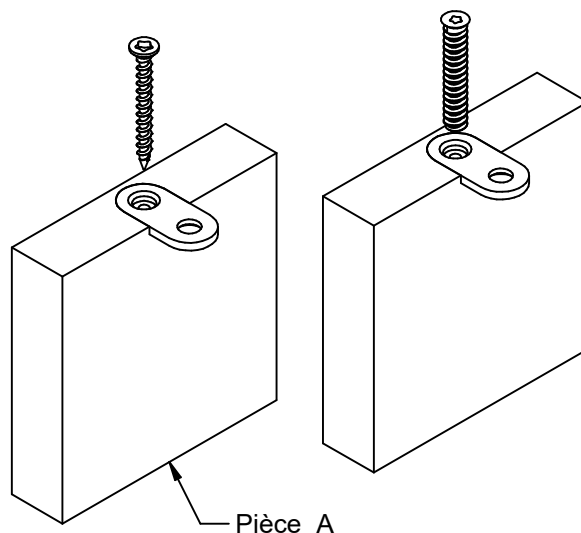
Réf. K800/B

Assembleur universel

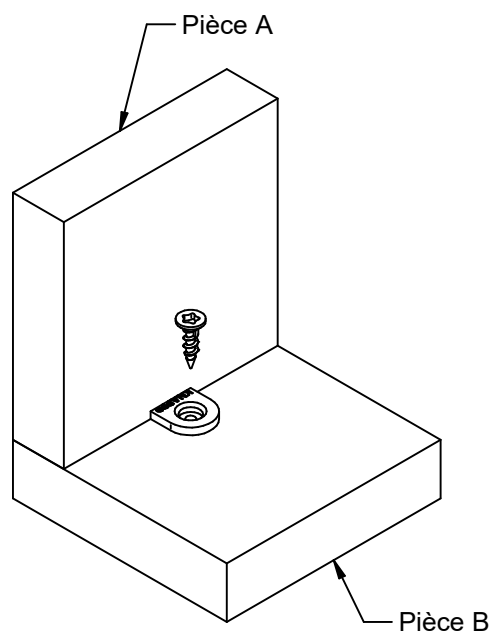
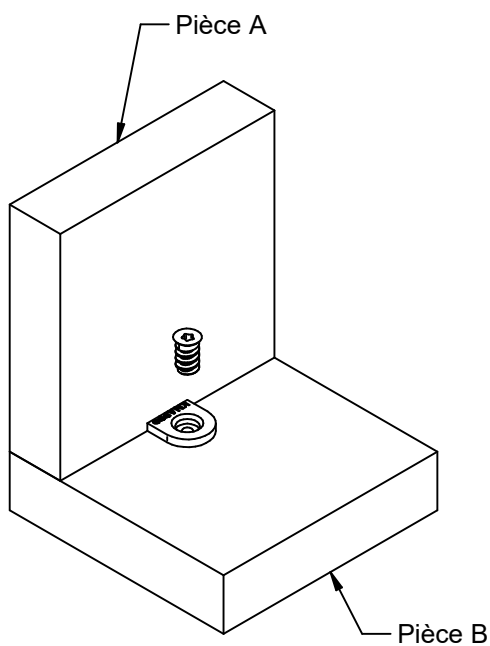
## 2. Pré-percer



## 3. Visser (avec vis EURO ou vis TF)



## 4. Monter



**KNAPP®**  
*connectors.com*

Knapp GmbH ■ Wassergasse 31 ■ A-3324 Euratsfeld ■ Tel.: +43 (0)7474 / 799 10 ■ Fax: +43 (0)7474 / 799 10 99  
Knapp GmbH ■ Vertrieb Deutschland ■ Föhrenweg 1 ■ D-85591 Vaterstetten ■ Tel.: +49 (0)8106 / 99 55 99 0 ■ Fax: +49 (0)8106 / 99 55 99 20 ■ E-Mail: info@knapp-verbinder.com  
Knapp GmbH Sàrl ■ Filiale France ■ 1A Rue du Stade ■ F - 67880 Innenheim Tel. : +33 (0)3 88 48 17 87 ■ Fax: +33 (0)9 70 62 81 87 ■ E-Mail : france@knapp-connectors.com