



**KOMBI biscuit connector and holding bracket. A flexible fastener to join wood and metal components.**

## Benefits

- Easy to install; can be de-mounted and re-mounted as often as needed
- Quick installation of wooden components to perforated rails
- Hidden and therefore not visible from the outside
- Non-corrosive



## Mounting



KOMBI to perforated rails



KOMBI to holding bracket vertically



KOMBI to holding bracket horizontally



KOMBI biscuit connector to vertically mounted holding bracket

## Applications

- Exhibition booths, shops, interior fittings
- Interior and exterior claddings and panels
- Blinds
- Decor

### KOMBI Startbox

100 pcs KOMBI biscuit connector G10,  
100 pcs KOMBI holding bracket stainless steel G12/62,  
200 pcs PH-screws 3x25mm,  
200 pcs SK-screws 4,5x35mm (stainless steel),  
1 pc KNAPP®-Adhesive PU+

€ 208,90



## Processing

### Mounting option 1: KOMBI biscuit connector to holding bracket on wood component



Positioning



Screw KOMBİ holding bracket to the component



Simply hook in the components



Ready to mount, and can be de-mounted at any time

### Mounting option 2: KOMBİ biscuit connector to perforated rails



Set the position for the biscuit cutter



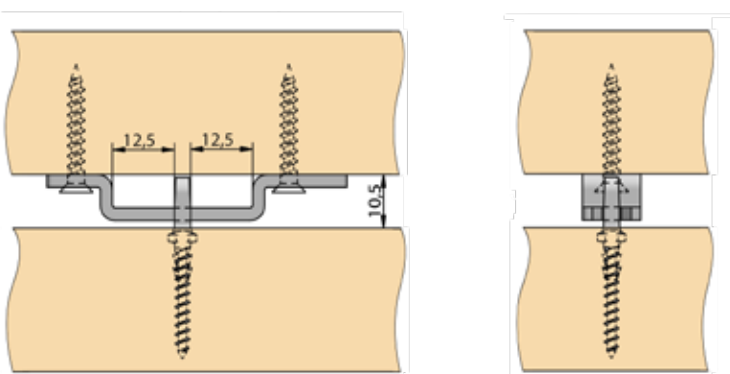
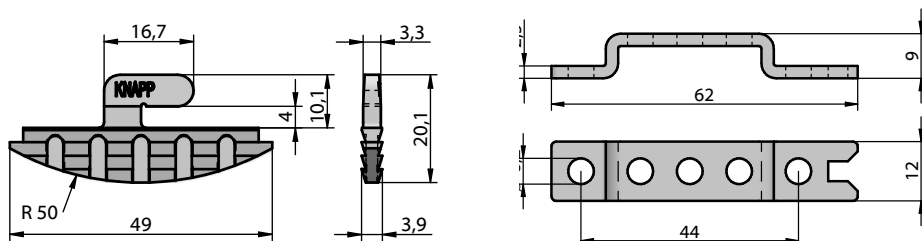
Milling the component with biscuit cutter (depth setting 10 mm)



Insert and screw on or glue



Mount the component to the perforated rails



Depending on the mounting (horizontally or vertically) of the holding bracket, it provides a fixed position or a sideways tolerance of  $\pm 12.5$  mm.

**Tip!**  
The KOMBİ biscuit connector can also be easily and securely glued in with the KNAPP®-Adhesive PU+.



New website –  
new Newsletter

>>> Sign up now!

Knapp GmbH | Wassergasse 31 | A-3324 Euratsfeld | Tel.: +43 (0)7474 / 799 10  
Fax: +43 (0)7474 / 799 10 99 | E-Mail: info@knapp-connectors.com