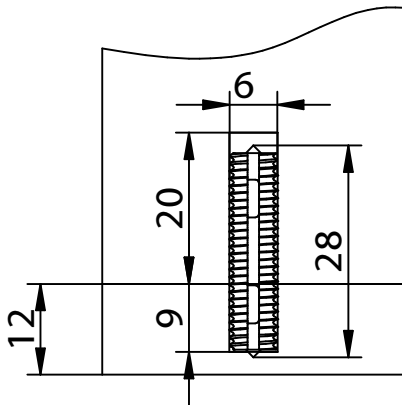


KNAPP-DÜBEL 6x28 und 8x36

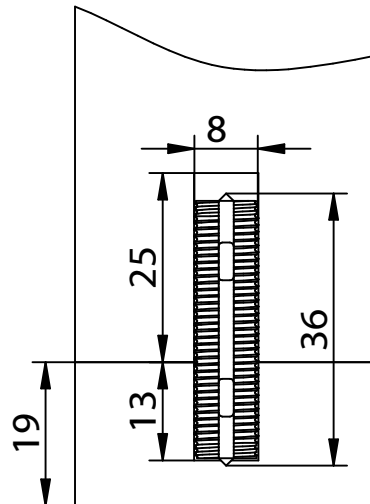
Selbstspannende Möbelverbindung

Art.Nr. K066 und K067

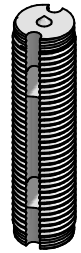
KD 6x28 Dübelbohrungen
 Ø 6mm für lösbare
 Verbindungen



KD 8x36 Dübelbohrungen
 Ø 8mm für lösbare
 Verbindungen



6x28mm

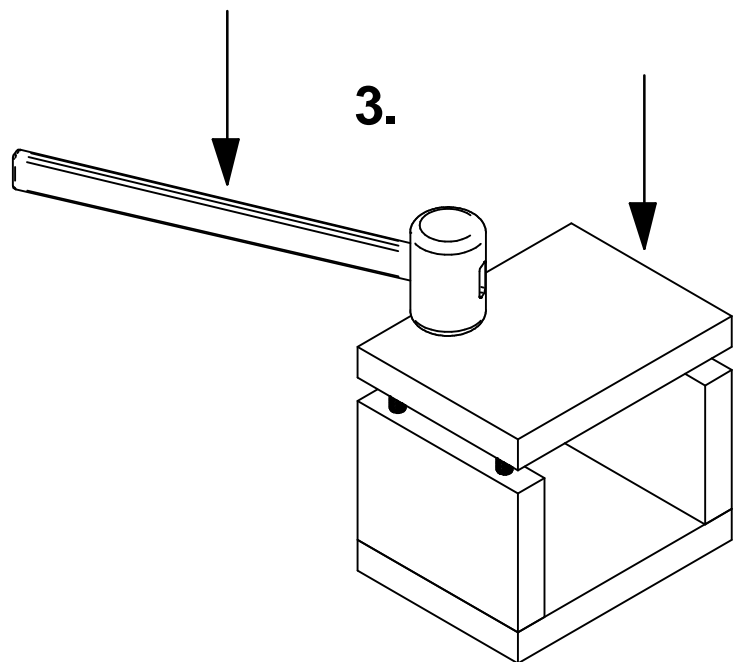
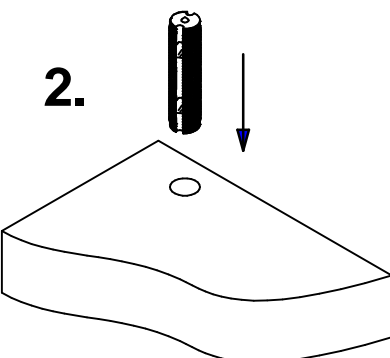
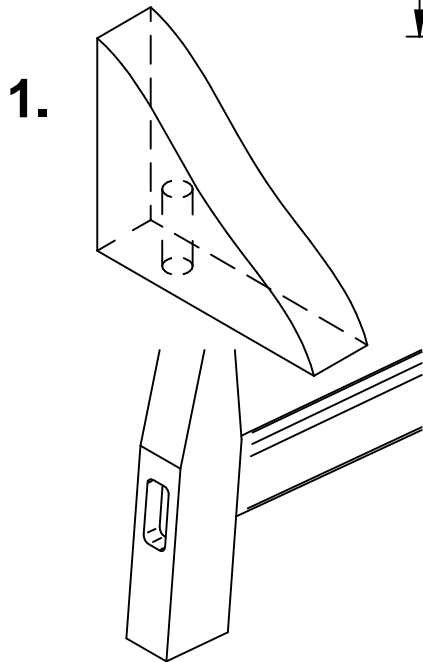


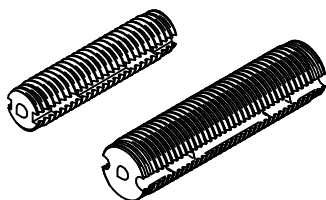
8x36mm

Art. Nr. K066

Art. Nr. K067

1. Dübellöcher vorbohren
2. KNAPP-DÜBEL in Seite oder Boden automatisch oder mit dem Hammer eintreiben
3. Möbelteile zusammenstecken und in der Korpuspresse oder mit dem Gummihammer fugendicht verpressen





KNAPP-DOWEL 6x28 und 8x36

Self-tightening furniture connector

Art.No. K066 and K067

KD 6x28 Dowel bore holes
 Ø 6mm for detachable
 connections

KD 8x36 Dowel bohr holes
 Ø 8mm for detachable
 connections



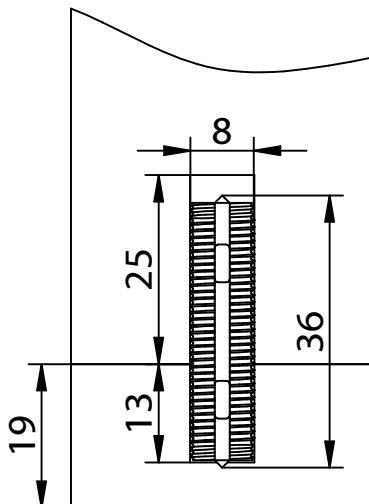
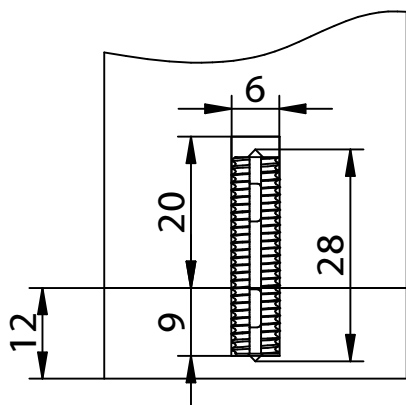
6x28mm



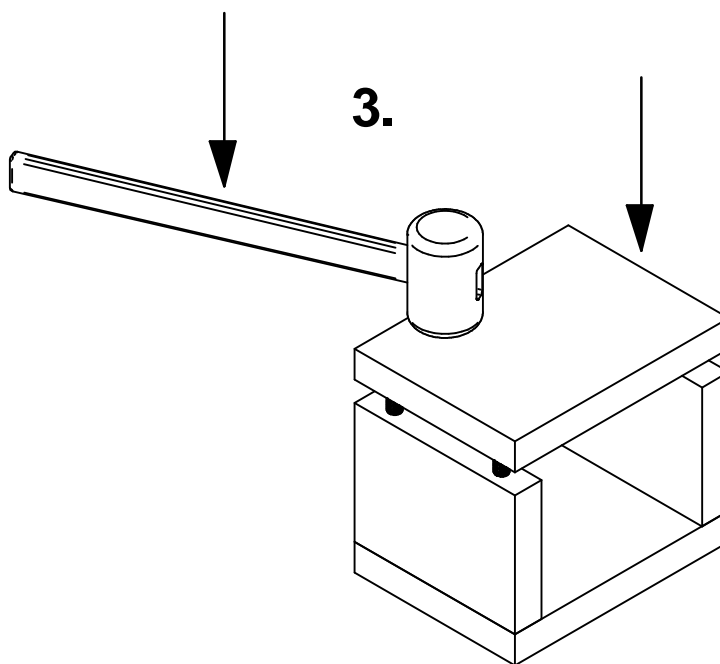
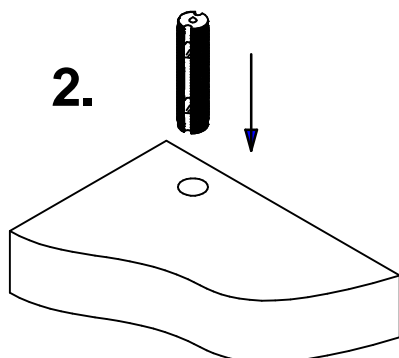
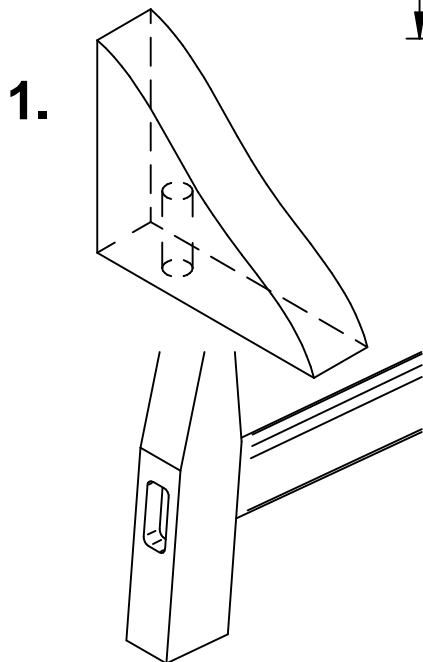
8x36mm

Art. No. K066

Art. No. K067

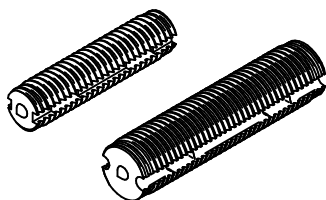


- 1.** Drill with dowel inserting machine or dowel-jig
- 2.** Knock in KNAPP-DOWEL in side or bottom
- 3.** Furniture Parts put together and in the case clamp or by rubber mallet caulked joints pressed



This drawing is the exclusive property of Knapp GmbH.

© Knapp GmbH. All measures in mm - Errors excepted. VERSION 02 08.09.2014



Notice de montage

TOURILLON KNAPP-KD 6x28 et 8x36

Réf. K066 et K067

Assembleur pour le meuble et la fenêtre

KD 6x28 perçage de tourillon
Ø 6mm

KD 8x36 perçage de tourillon
Ø 8mm



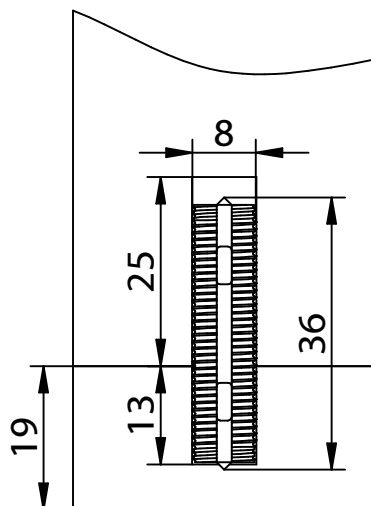
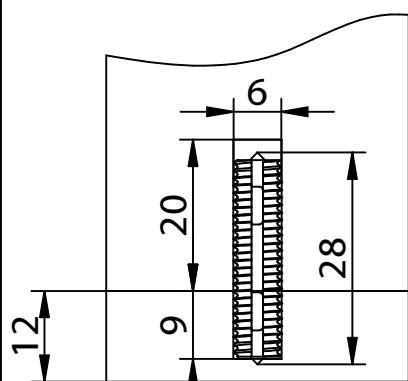
6x28mm

Réf. K066

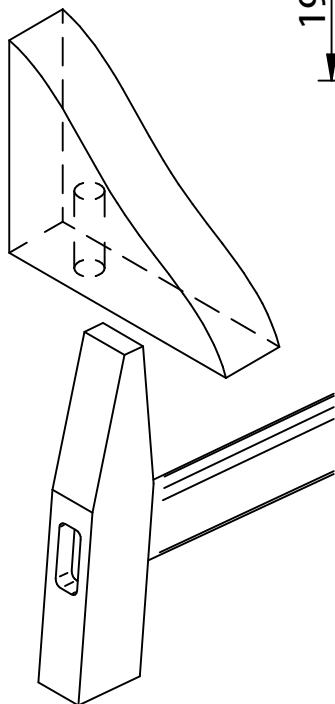


8x36mm

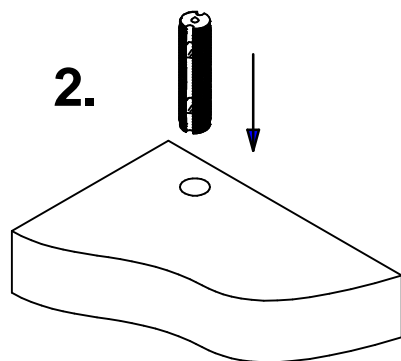
Réf. K067



1.



2.



1. Effectuer les perçages des tourillons
2. Encoller à la colle PU et insérer les Tourillons-KN APP
3. Emboîter les pièces ensemble, les mettre sous presse ou serrer au serre-joint jusqu'à obtention de joints bien fermés

3.

